

Date: 29 November 2024

Re: Mineral Extraction Zone 15: Grey Valley Distribution

1.0 Notified MINZ

A map of the notified Mineral Extraction Zone (MINZ) at Grey Valley Distribution is included in **Figure 1** below and attached in **Appendix 1**.



Figure 1: Notified MINZ at Grey Valley Distribution.

2.0 Submissions

No submissions were received regarding the notified MINZ at Grey Valley Distribution.

3.0 Evidence

No evidence was received regarding the notified MINZ at Grey Valley Distribution.

4.0 Assessment of Information Provided by Council

Information has been provided by Buller District Council and the West Coast Regional Council. The following resource consents were identified as relative to the notified MINZ at Grey Valley Distribution (**Figure 1** above).

4.1 Buller District Council

4.1.1 RC05/29

This resource consent approved the construction and operation of a coal stockpile and a railway loadout facility on Part Lot 3 Deposited Plan 5606 Block XI Mawheraiti Survey District, at Ikamatua. This activity is an auxiliary activity to the applicant's coalmine operation at Pike River, in the Grey District. This consent was granted on 08 August 2005. A site plan was provided with the resource consent that shows the proposed layout of the facility within the site boundaries (**Appendix 2**). See **Figure 2** below for an approximation of the subject site (outlined in blue) in relation to the notified MINZ area for Grey Valley Distribution.

4.1.2 RC080045

This resource consent approves the construction and operation of a coal stockpile and loadout facility, including rail siding and turn round loop on Lots 18 and 20 DP 10145 and the constitution of an access road over Pt Lot 3 Deposited Plan 5606. This activity is an auxiliary activity to the applicant's coalmine operation at Pike River, in the Grey District. This consent was granted on 16 June 2008. A site plan was provided with the resource consent that shows the proposed layout of the facility within the site boundaries (**Appendix 3**). See **Figure 2** below for an approximation of the subject site (outlined in yellow) in relation to the notified MINZ area for Grey Valley Distribution.

4.2 Summary

It is noted that Schedule 9 of the proposed Te Tai o Poutini Plan, which identified lawfully established mineral extraction and processing areas by listing the authorisation mechanism that permitted the activity, identified both RC050029 and RC080045 in relation to the notified MINZ at Grey Valley Distribution.

Based on an assessment of the available information, the resource consents available confirm that the full extent of the notified MINZ at Grey Valley Distribution has authorisation to operate a mining activity (**Figure 2** below). A full copy of the map depicting the sites with authorisation to operate a mining activity in relation to MINZ at Grey Valley Distribution is provided at **Appendix 4**.



Figure 2: Map of Authorised Mining Activities in relation to MINZ. The full map at Appendix 4.

5.0 Recommendation

The additional information provided by the RC05/29 and RC080045 identifies that the full extent of the notified MINZ at Grey Valley Distribution has authorisation to operate a mining activity.

As such, it is recommended that the notified MINZ at Grey Valley Distribution is **retained**, as outlined in **Figure 2** above and **Appendix 4**, as it aligns with the consented boundaries of RC05/29 and RC080045 as discussed above.

Appendix 1

Notified MINZ Area



Urban & Environmental



Legend

Mineral Extraction Area

Contains data sourced from LINZ Data Service licenced for reuse under CC BY 4.0, including imagery and property boundaries.
 Property boundaries accuracy: +/-1m in urban areas, +/-30m in rural areas.
 Datum: NZGD 2000
 Coordinate System: NZGD 2000 New Zealand Transverse Mercator
 This map was produced with ArcGIS Pro (Esri).

Mineral Extraction Area
 Grey Valley Distribution



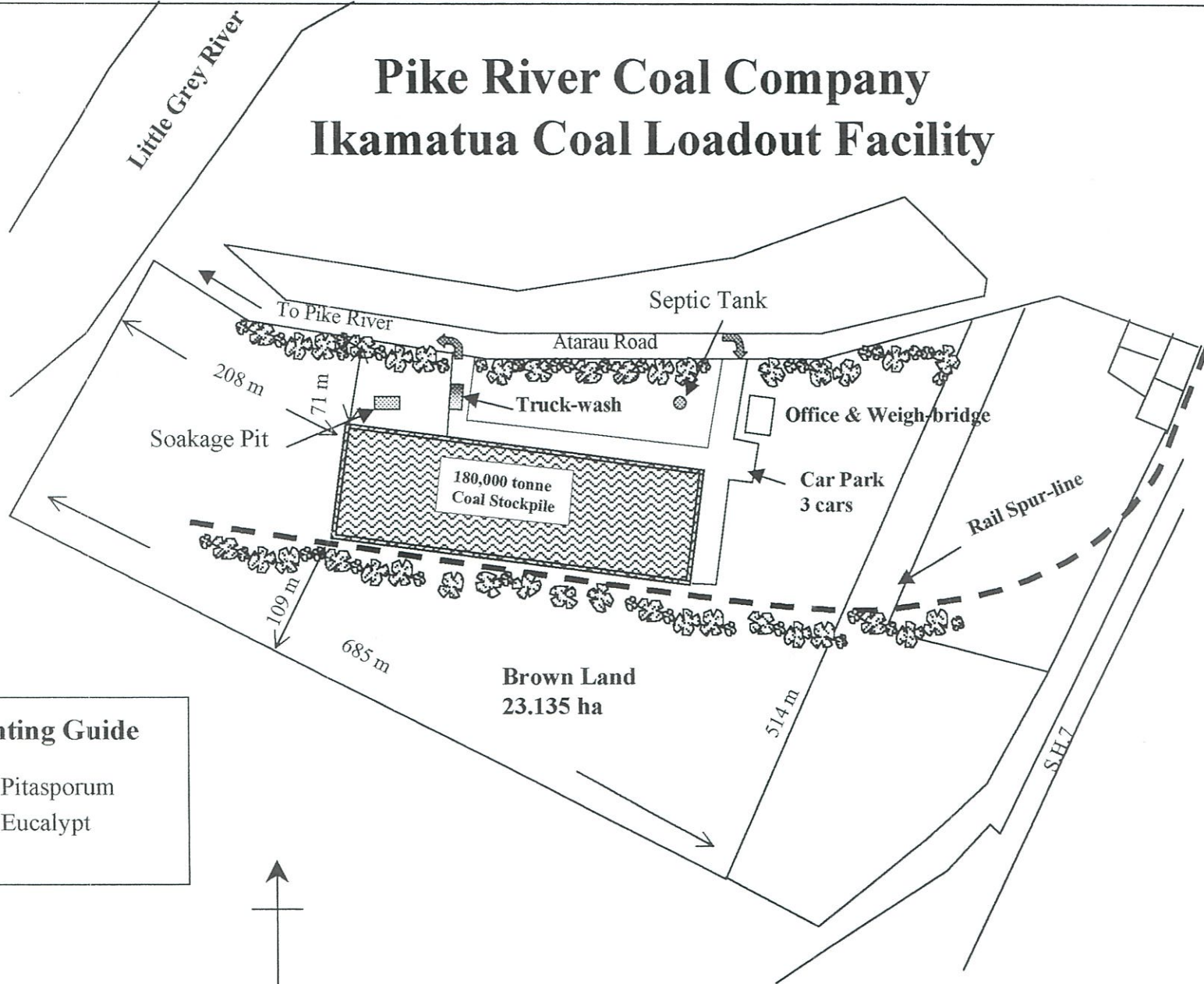
Appendix 2

RC050029 Site Plan





Urban & Environmental

Pike River Coal Company Ikamatua Coal Loadout Facility



Planting Guide

-  Pitasporum
-  Eucalypt



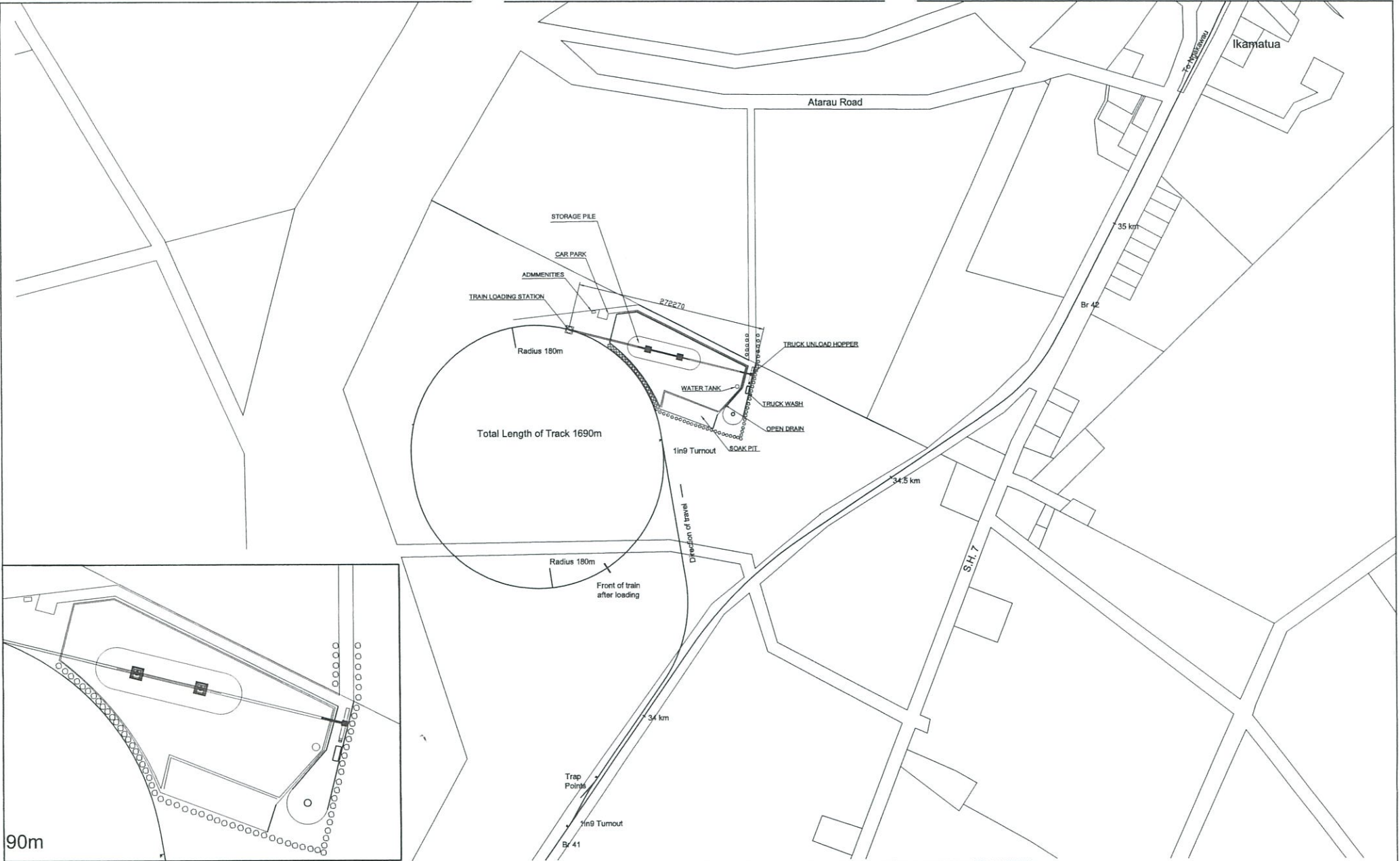
Appendix 3

RC80045 Relevant Plan



Urban & Environmental

RC080045 relevant plan!



© 2007 BRIGHTWATER ENGINEERS LTD. THESE PLANS AND THE DESIGNS SHOWN THEREIN REMAIN THE PROPERTY OF BRIGHTWATER ENGINEERS LTD. AND MAY NOT BE COPIED IN ANY FORM (INCLUDING THE MANUFACTURE OF ALL OR PART OF THE DESIGNS SHOWN) WITHOUT PRIOR PERMISSION IN WRITING.

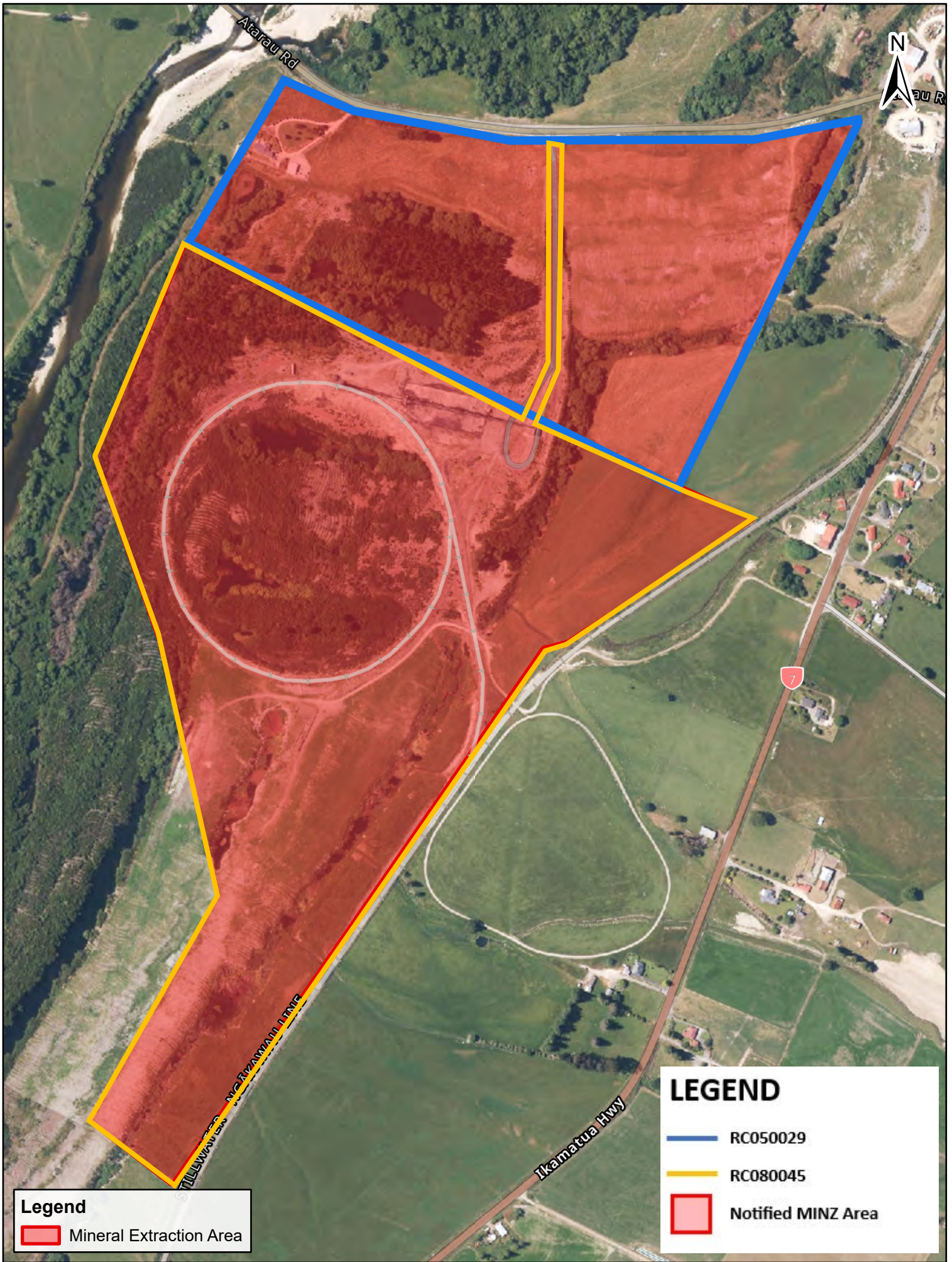
		 DO NOT SCALE DIMENSIONS IN MILLIMETRES DRAFTING STANDARD: AS1100.101-1992		 ISO 9001 Certified		APP DATE DRAWN DB 31/01/08		PIKE RIVER COAL RAIL LOADING SYSTEM PROPOSED SITE LAYOUT			
						PRODUCTION SALES DESIGN DRAFTING		SIZE SCALE A1 nts		DRAWING NUMBER 11006-00-01	
		TOLERANCE TABLE									
		NOMINAL DIMENSIONS		DIMENSIONS WITH DECIMALS							
		FROM	TO	TOLERANCE	NO. OF DECIMALS	TOLERANCE					
		0	300mm	±1.2mm	X DECIMALS	± 0.1					
		300mm	1000mm	±1.5mm	XX DECIMALS	± 0.05					
		1000mm	3000mm	±2.0mm							
REV. REVISION DESCRIPTION BY APP. DATE CAD FILE TYPE AUTODESK AUTOCAD 2004 MECHANICAL CAD FILENAME 11006-00-01_B.DWG											

Appendix 4

Map of Authorised Mining Activities in relation to MINZ

B&A

Urban & Environmental



Legend
 Mineral Extraction Area

LEGEND
 RC050029
 RC080045
 Notified MINZ Area



Contains data sourced from LINZ Data Service licenced for reuse under CC BY 4.0, including imagery and property boundaries.
 Property boundaries accuracy: +/-1m in urban areas, +/-30m in rural areas.
 Datum: NZGD 2000
 Coordinate System: NZGD 2000 New Zealand Transverse Mercator
 This map was produced with ArcGIS Pro (Esri).

Mineral Extraction Area
 Grey Valley Distribution

