

A satellite map showing a wooded area. A grey line represents a trail, starting from a parking spot (blue circle with 'P') at the bottom right and branching out towards the top left. A green location pin is placed on the trail. A body of water is visible on the left side of the map.

Hartmount and Ross
Place [Ross
subdivision]

pTTPP hearing
01 August 2024



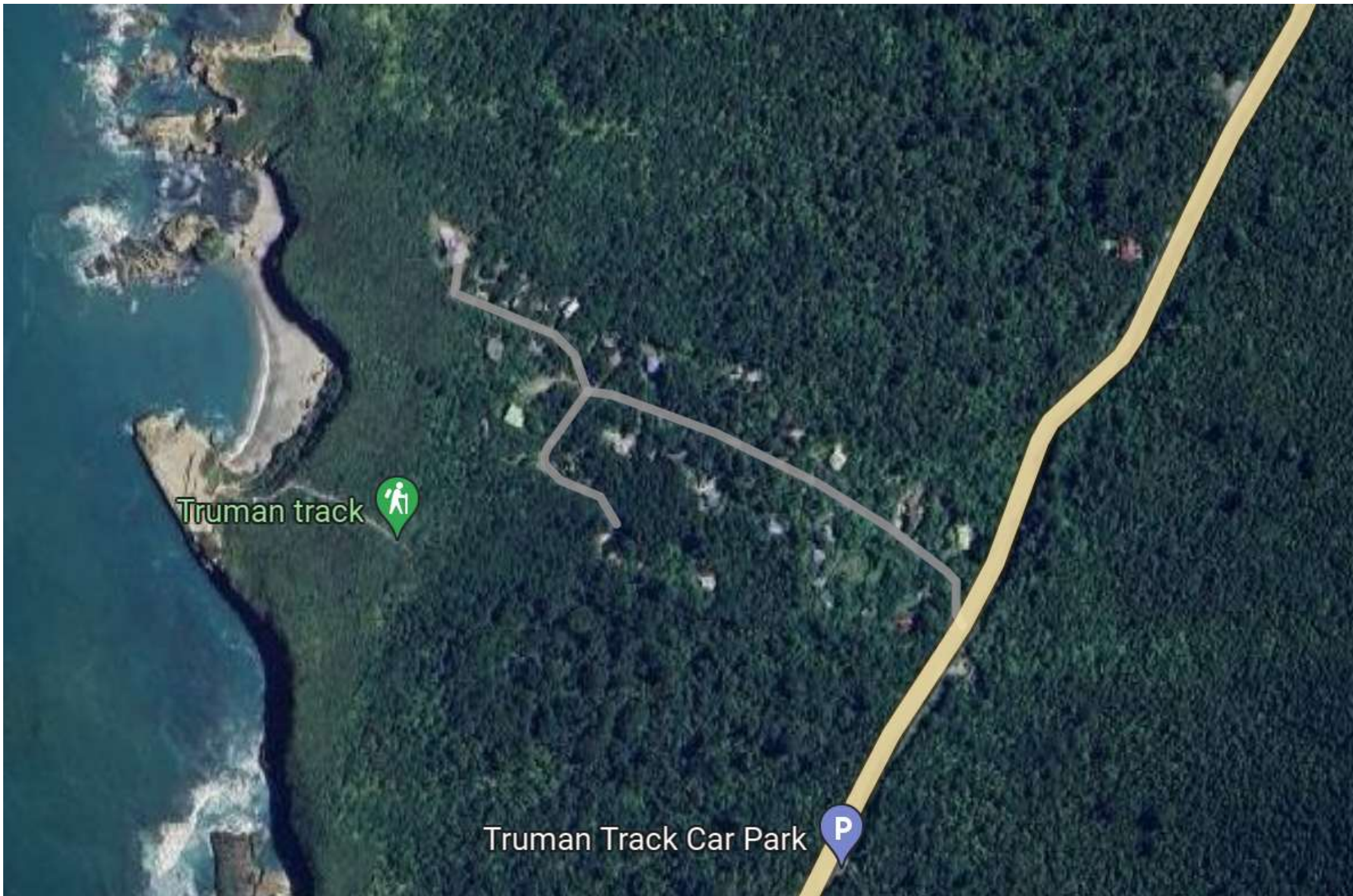












Truman track



Truman Track Car Park



Feb 2018





