

Coast Rd

Langridge Reserve

**Legend**

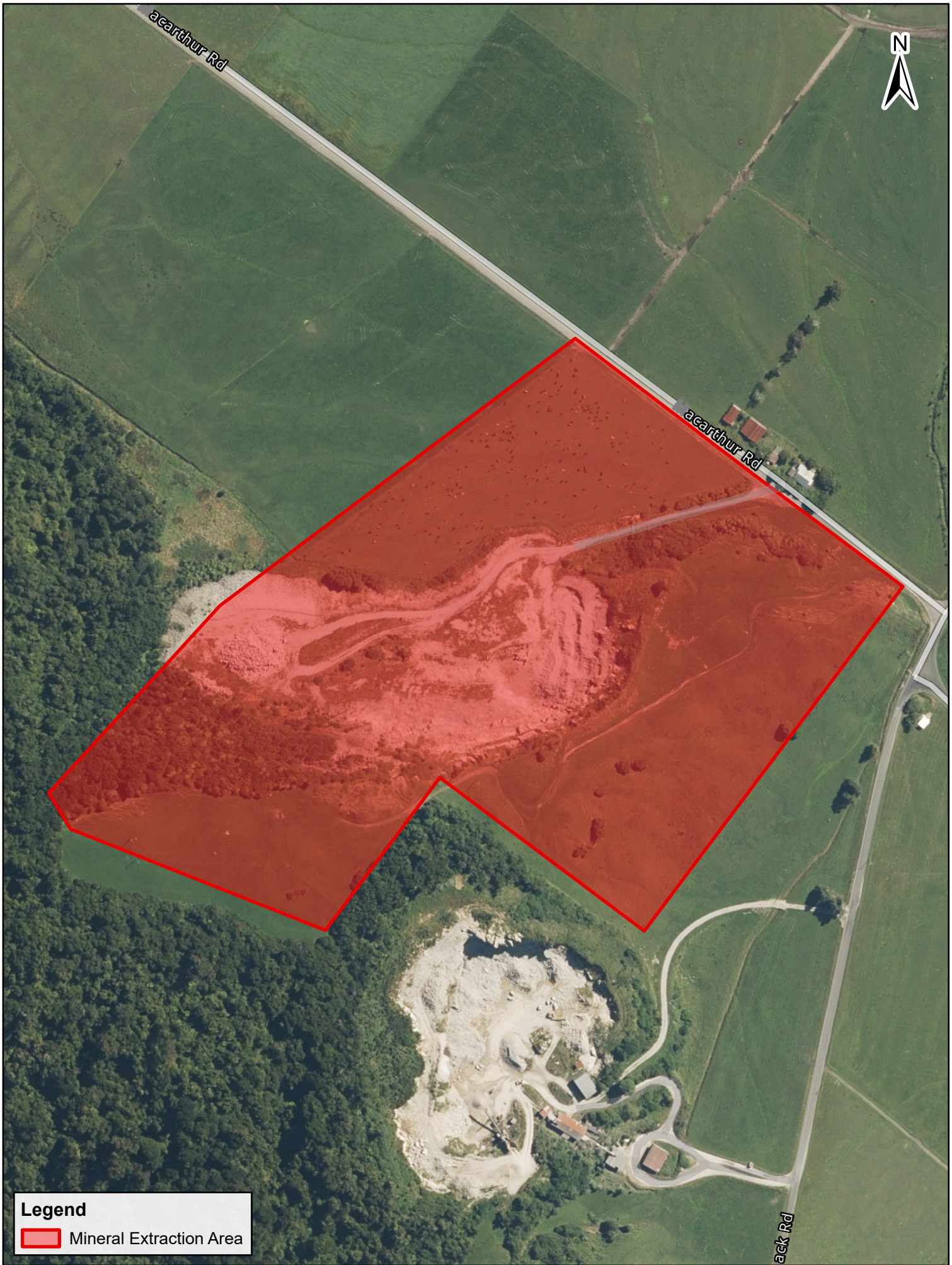
Mineral Extraction Area



Contains data sourced from LINZ Data Service licenced for reuse under CC BY 4.0, including imagery and property boundaries.  
 Property boundaries accuracy: +/-1m in urban areas, +/-30m in rural areas.  
 Datum: NZGD 2000  
 Coordinate System: NZGD 2000 New Zealand Transverse Mercator  
 This map was produced with ArcGIS Pro (Esri).

**Mineral Extraction Area**  
 Barrytown





**Legend**

Mineral Extraction Area

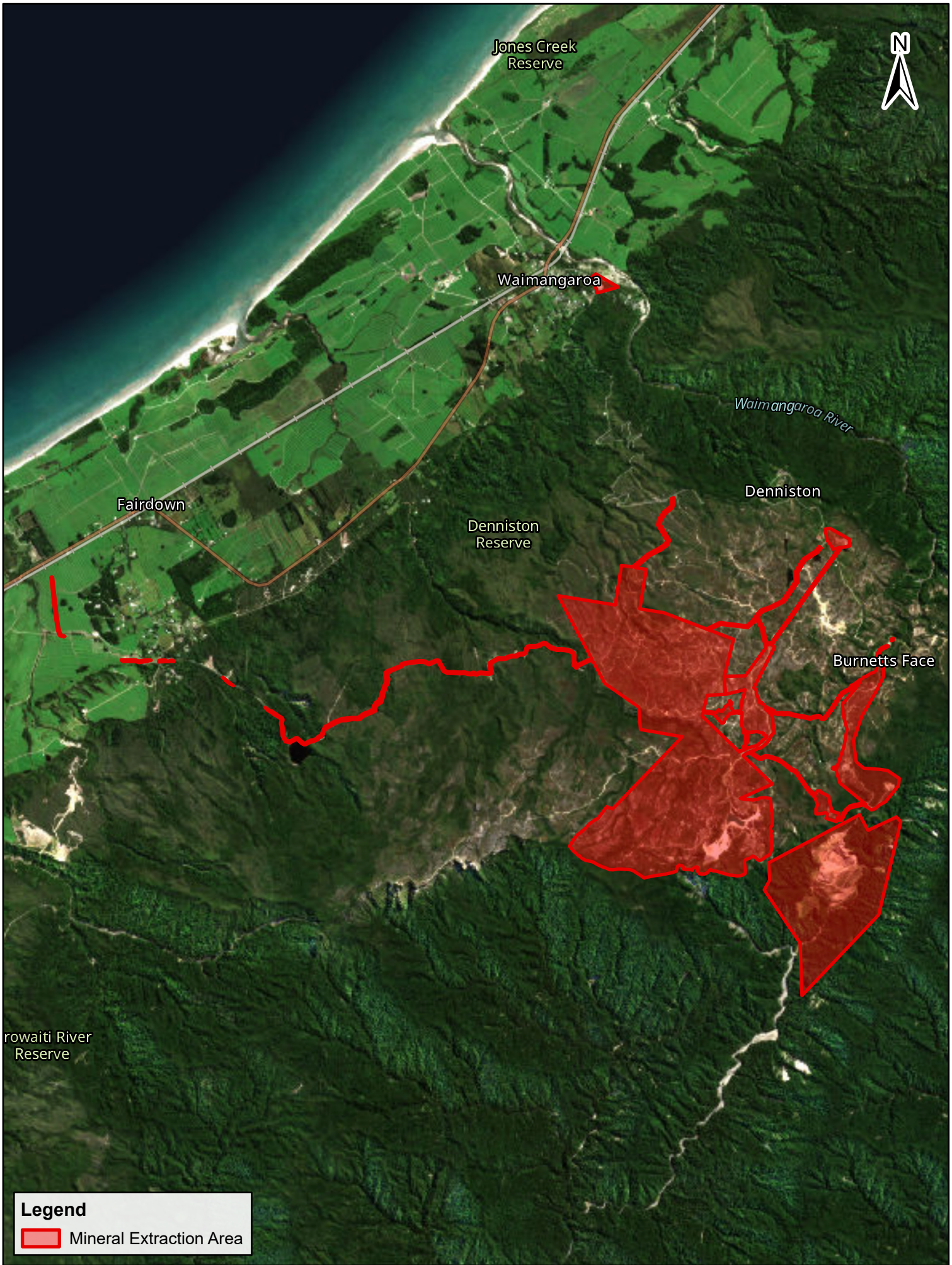
**The Property Group**

Contains data sourced from LINZ Data Service licenced for reuse under CC BY 4.0, including imagery and property boundaries.  
 Property boundaries accuracy: +/-1m in urban areas, +/-30m in rural areas.  
 Datum: NZGD 2000  
 Coordinate System: NZGD 2000 New Zealand Transverse Mercator  
 This map was produced with ArcGIS Pro (Esri).

PREPARED BY	Conor McIntosh	DATE	12/04/2024	SHEET	1 OF 1	TPG REF	718509	A4 Scale	1:3,000	0	70 Metres
-------------	----------------	------	------------	-------	--------	---------	--------	----------	---------	---	-----------

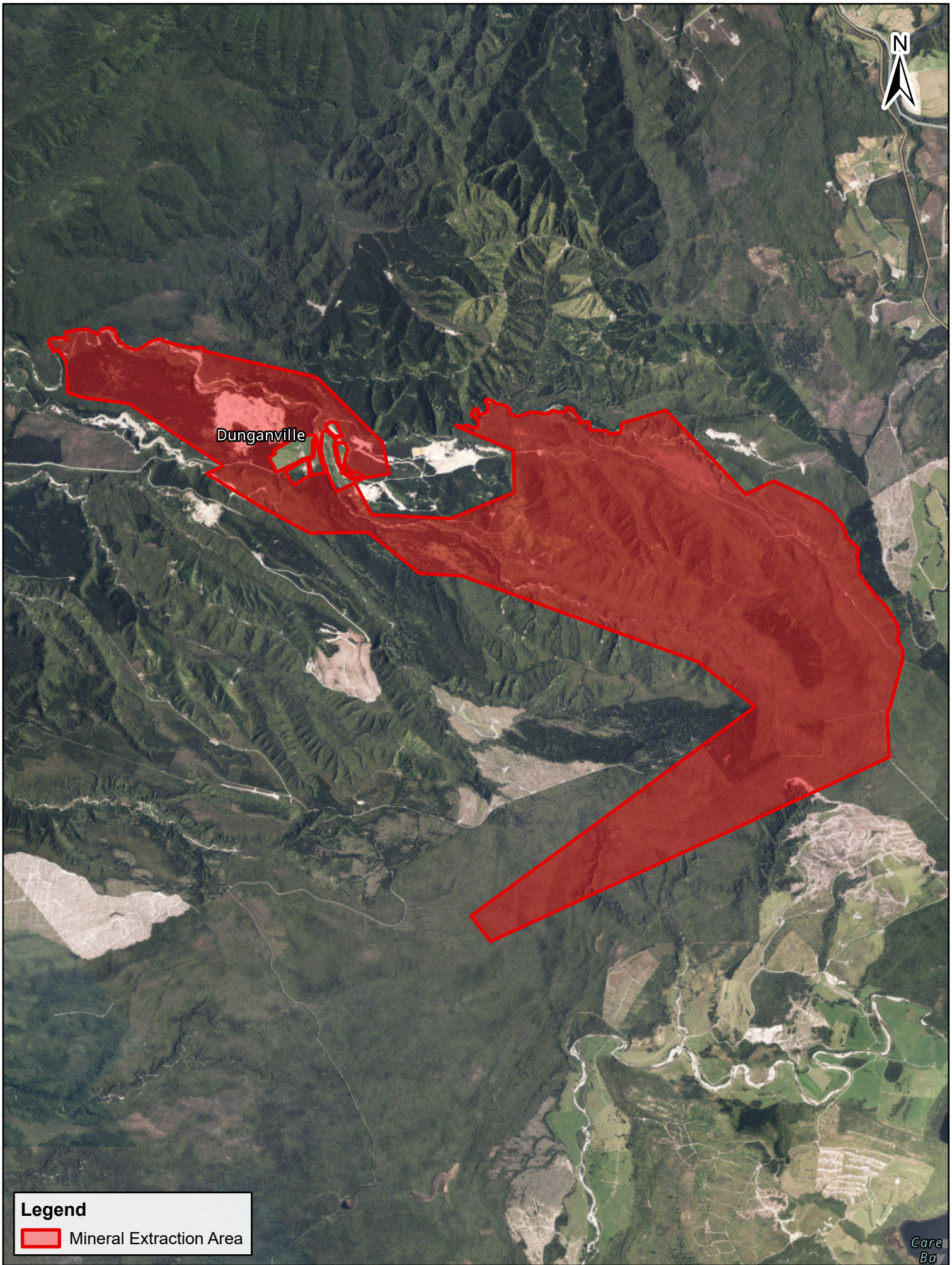
**Mineral Extraction Area**  
**Camelback Quarry**

**Te Tai o Poutini**  
**PLAN**  
 A combined district plan for the West Coast



**Legend**


Mineral Extraction Area



Dunganville



**Legend**

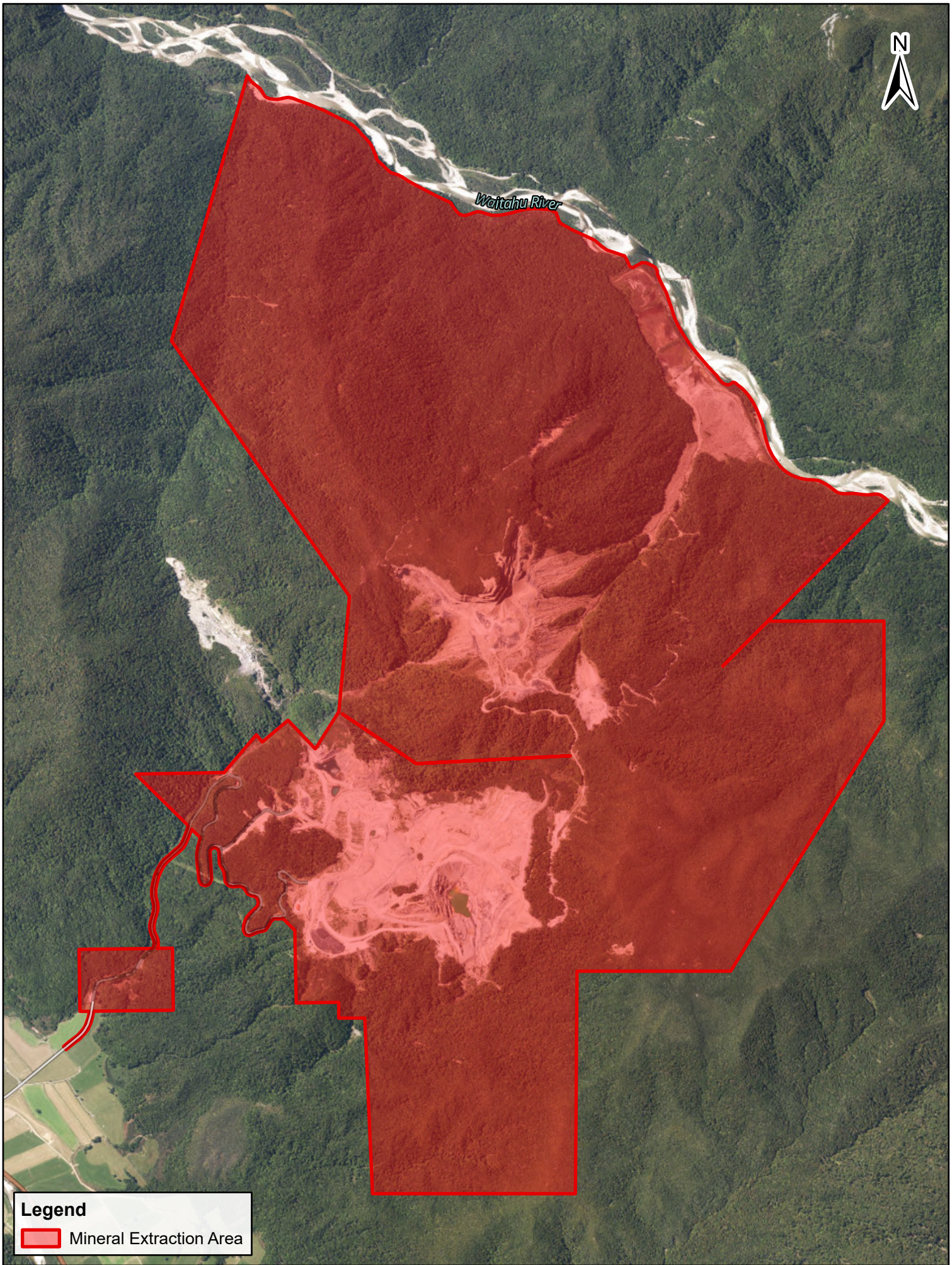
 Mineral Extraction Area

Contains data sourced from LINZ Data Service licenced for reuse under CC BY 4.0, including imagery and property boundaries.  
 Property boundaries accuracy: +/-1m in urban areas, +/-30m in rural areas.  
 Datum: NZGD 2000  
 Coordinate System: NZGD 2000 New Zealand Transverse Mercator  
 This map was produced with ArcGIS Pro (Esri).

**Mineral Extraction Area**  
 Dunganville



Care  
Ba



Waitahu River

**Legend**

Mineral Extraction Area

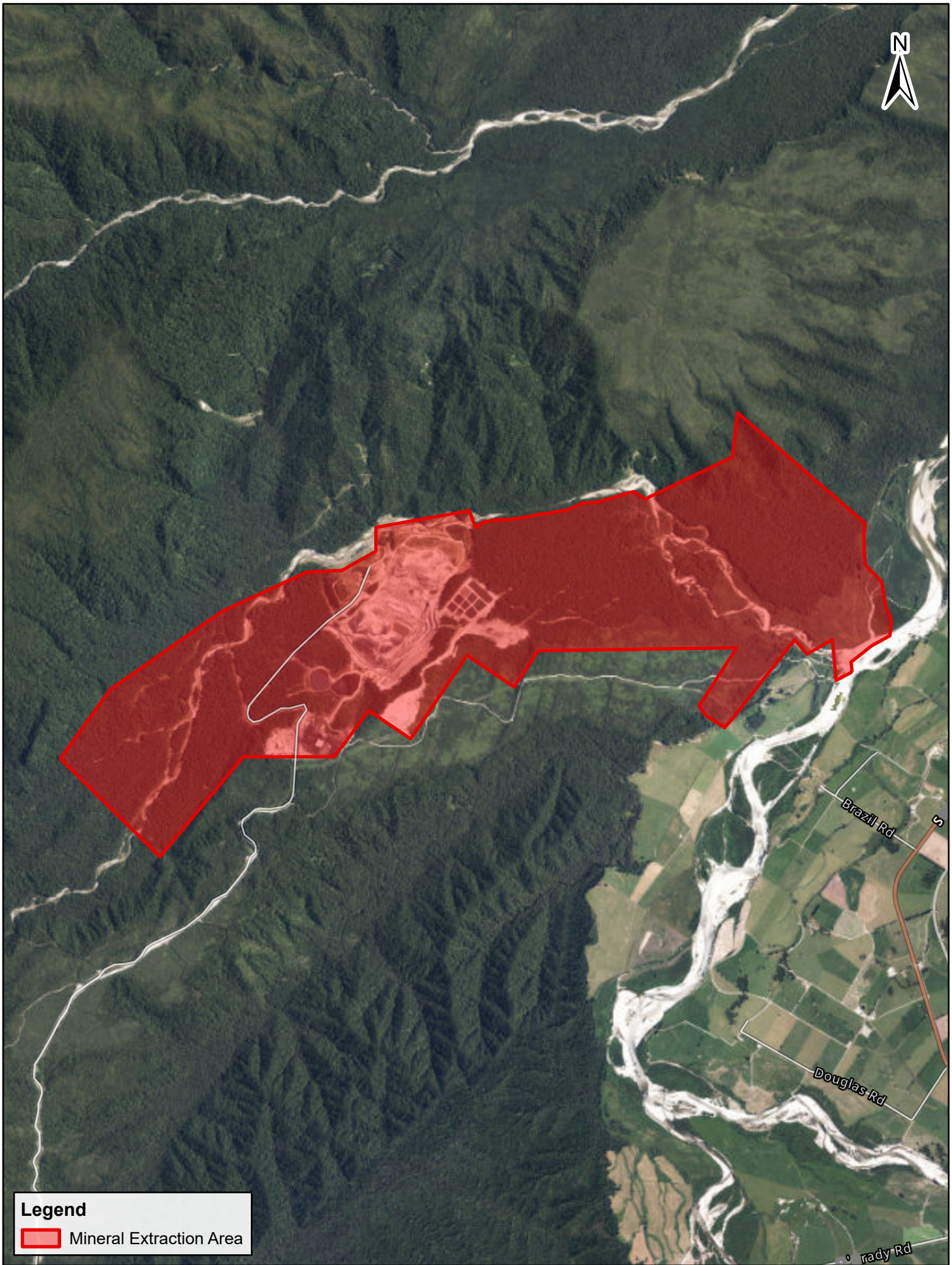


Contains data sourced from LINZ Data Service licenced for reuse under CC BY 4.0, including imagery and property boundaries.  
 Property boundaries accuracy: +/-1m in urban areas, +/-30m in rural areas.  
 Datum: NZGD 2000  
 Coordinate System: NZGD 2000 New Zealand Transverse Mercator  
 This map was produced with ArcGIS Pro (Esri).


**Mineral Extraction Area**  
Echo



PREPARED BY	Conor McIntosh	DATE	12/04/2024	SHEET	1 OF 1	TPG REF	718509	A4 Scale	1:23,000	0	540 Metres
-------------	----------------	------	------------	-------	--------	---------	--------	----------	----------	---	------------



**Legend**

 Mineral Extraction Area



Contains data sourced from LINZ Data Service licenced for reuse under CC BY 4.0, including imagery and property boundaries.  
Property boundaries accuracy: +/-1m in urban areas, +/-30m in rural areas.  
Datum: NZGD 2000  
Coordinate System: NZGD 2000 New Zealand Transverse Mercator  
This map was produced with ArcGIS Pro (Esri).

**Mineral Extraction Area**  
Giles Creek



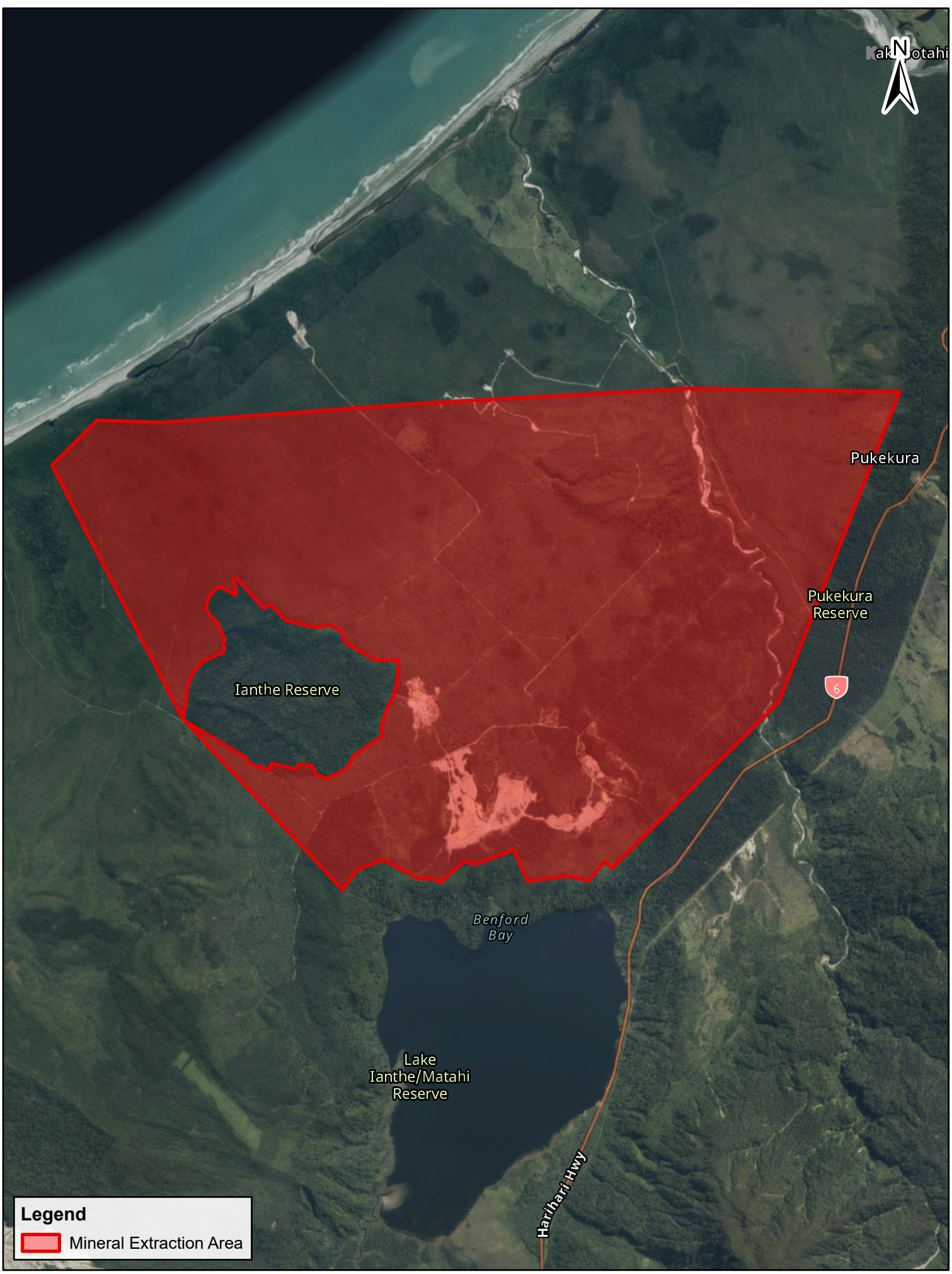
PREPARED BY	Conor McIntosh	DATE	12/04/2024	SHEET	1 OF 1	TPG REF	718509	A4 Scale	1:30,000	0	700 Metres
-------------	----------------	------	------------	-------	--------	---------	--------	----------	----------	---	------------




Contains data sourced from LINZ Data Service licenced for reuse under CC BY 4.0, including imagery and property boundaries.  
 Property boundaries accuracy: +/-1m in urban areas, +/-30m in rural areas.  
 Datum: NZGD 2000  
 Coordinate System: NZGD 2000 New Zealand Transverse Mercator  
 This map was produced with ArcGIS Pro (Esri).

**Mineral Extraction Area**  
 Grey Valley Distribution





**Legend**

 Mineral Extraction Area



Contains data sourced from LINZ Data Service licenced for reuse under CC BY 4.0, including imagery and property boundaries.  
 Property boundaries accuracy: +/-1m in urban areas, +/-30m in rural areas.  
 Datum: NZGD 2000  
 Coordinate System: NZGD 2000 New Zealand Transverse Mercator  
 This map was produced with ArcGIS Pro (Esri).  
 PREPARED BY **Conor McIntosh** DATE **12/04/2024** SHEET **1 OF 1** TPG REF **718509** A4 Scale **1:43,000**

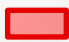
**Mineral Extraction Area**  
**Ianthe Forest**

 **Te Tai o Poutini**  
**PLAN**  
 A combined district plan for the West Coast  
 0  975 Metres





**Legend**

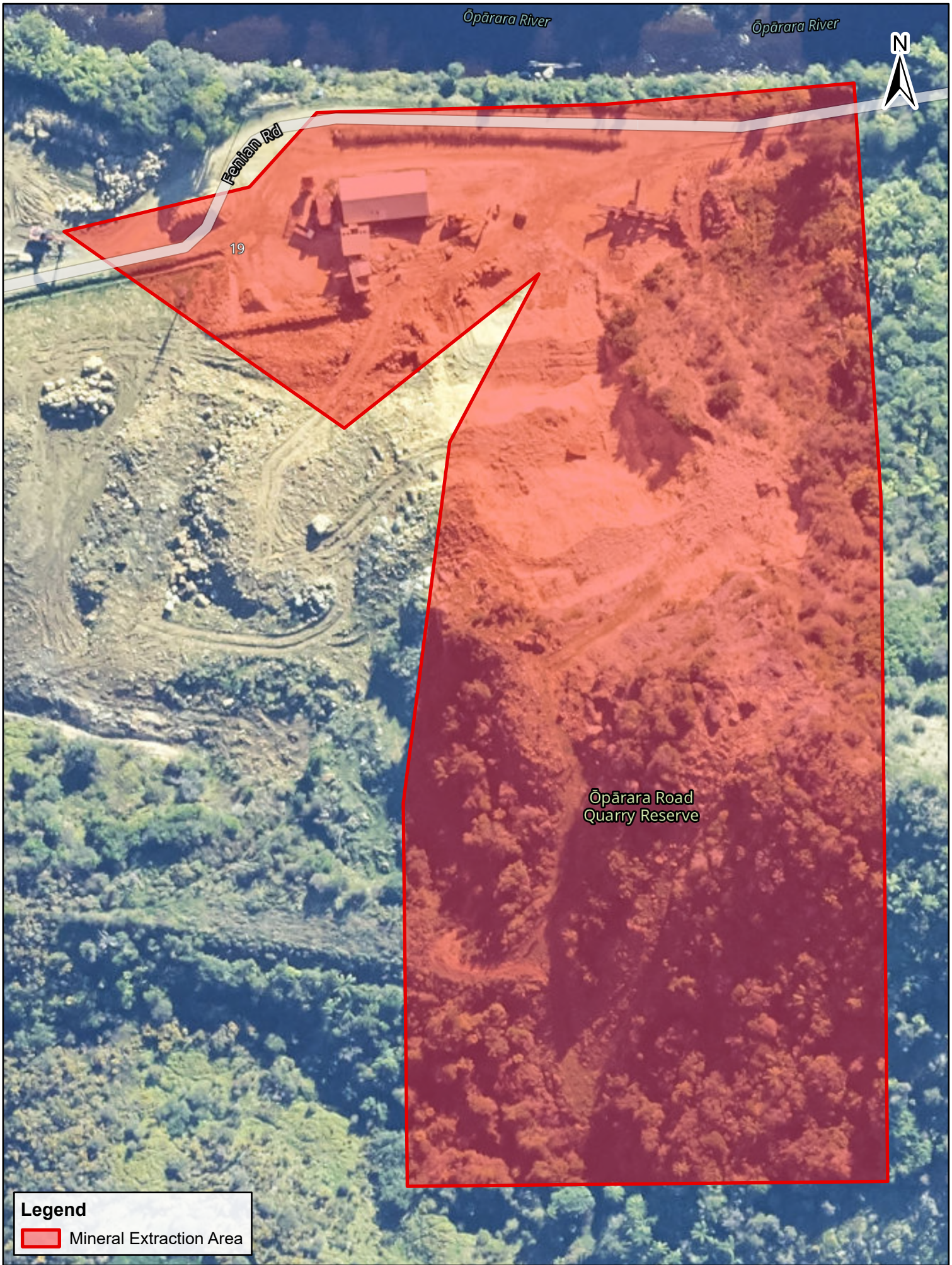
 Mineral Extraction Area



Contains data sourced from LINZ Data Service licenced for reuse under CC BY 4.0, including imagery and property boundaries.  
Property boundaries accuracy: +/-1m in urban areas, +/-30m in rural areas.  
Datum: NZGD 2000  
Coordinate System: NZGD 2000 New Zealand Transverse Mercator  
This map was produced with ArcGIS Pro (Esri).

**Mineral Extraction Area**  
Inchbonnie Quarry





Ōpārara River

Ōpārara River



Fenian Rd

19

Ōpārara Road  
Quarry Reserve

**Legend**

Mineral Extraction Area

**The Property Group**

Contains data sourced from LINZ Data Service licenced for reuse under CC BY 4.0, including imagery and property boundaries.  
 Property boundaries accuracy: +/-1m in urban areas, +/-30m in rural areas.  
 Datum: NZGD 2000  
 Coordinate System: NZGD 2000 New Zealand Transverse Mercator  
 This map was produced with ArcGIS Pro (Esri).

PREPARED BY	Conor McIntosh	DATE	12/04/2024	SHEET	1 OF 1	TPG REF	718509	A4 Scale	1:1,000	0	20 Metres
-------------	----------------	------	------------	-------	--------	---------	--------	----------	---------	---	-----------

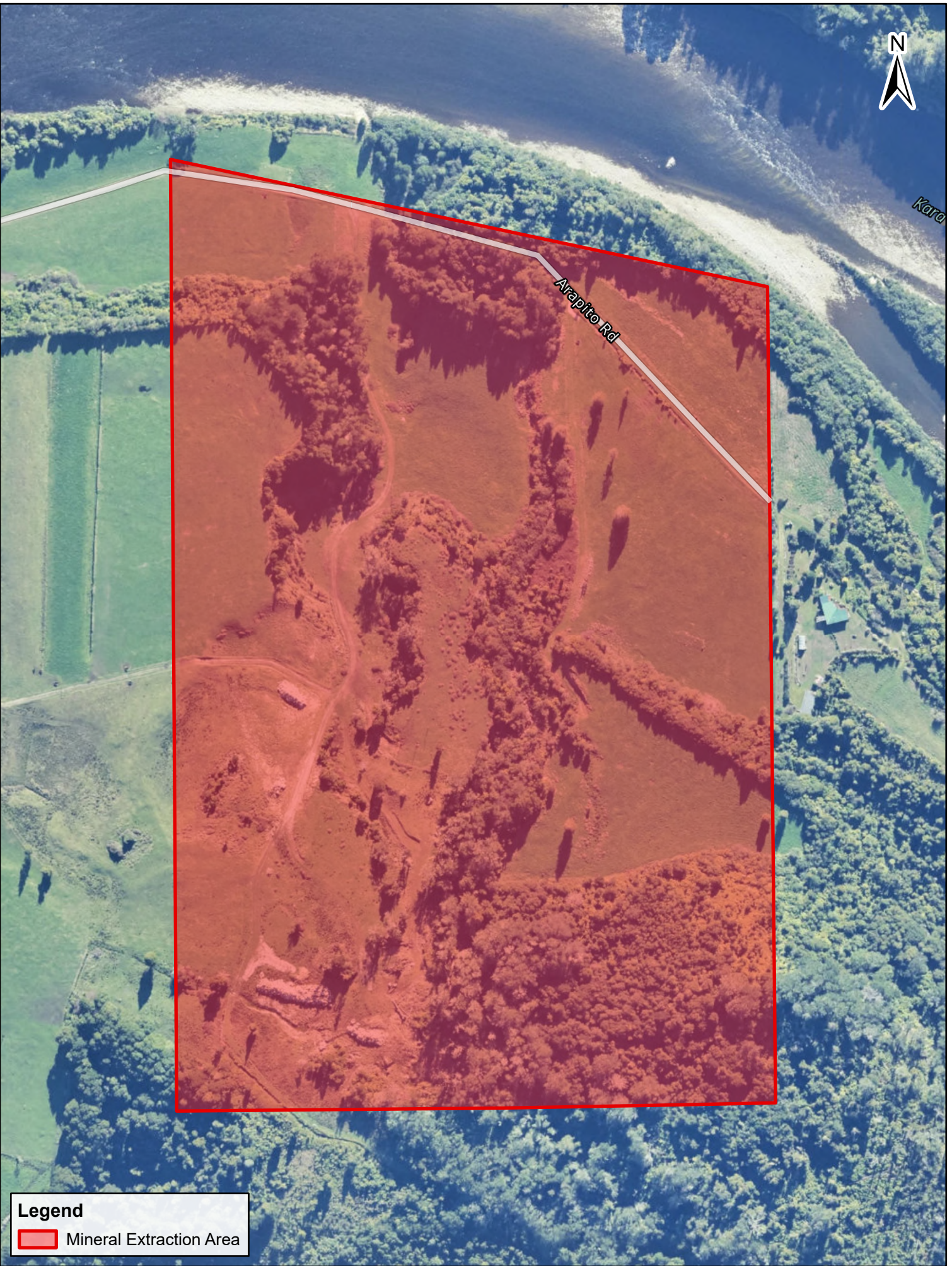
**Mineral Extraction Area**  
 Karamea Lime Quarry

**Te Tai o Poutini**  
 PLAN  
 A combined district plan for the West Coast

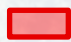


Kara

Arapito Rd



**Legend**

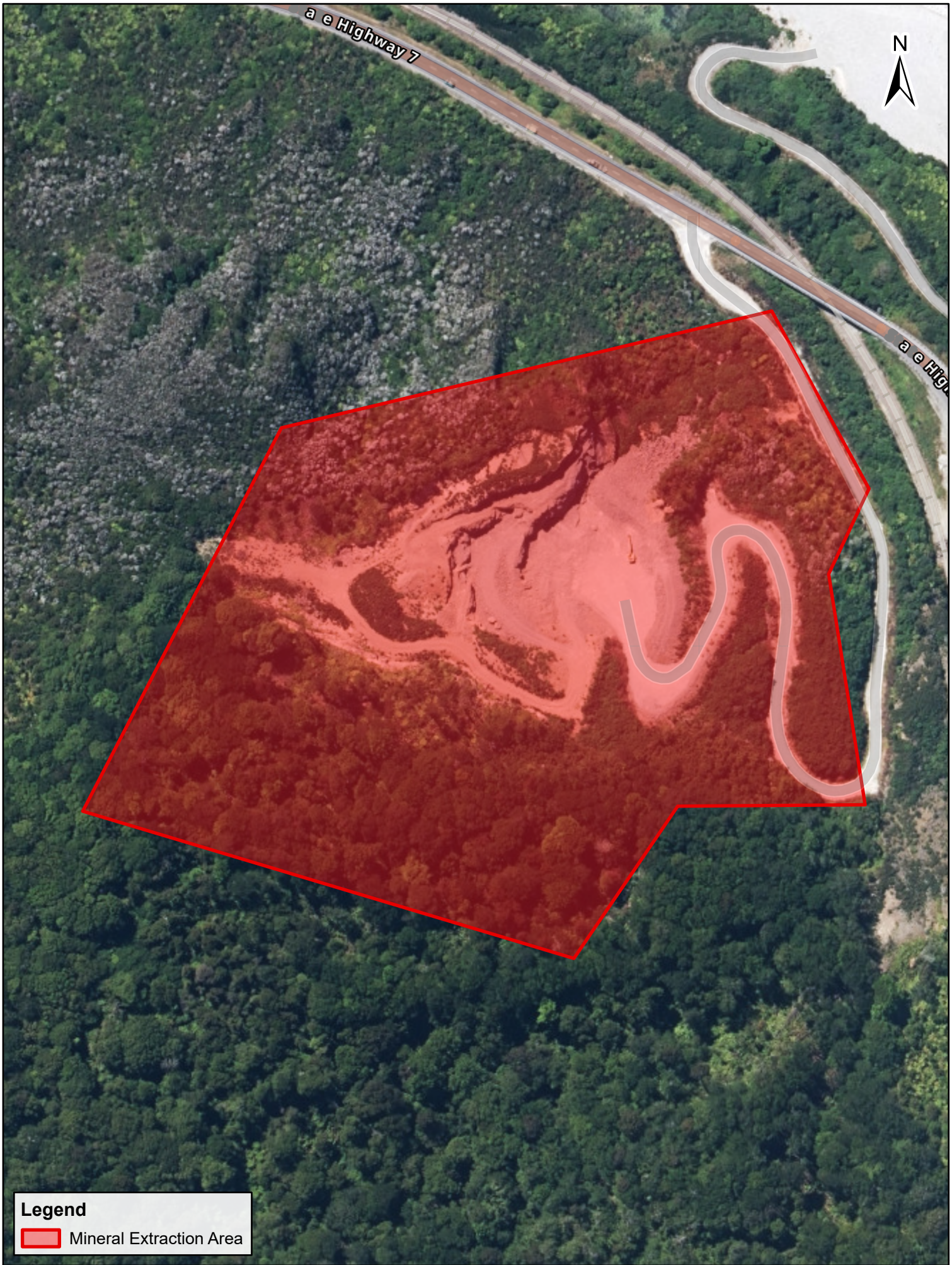
 Mineral Extraction Area




Contains data sourced from LINZ Data Service licenced for reuse under CC BY 4.0, including imagery and property boundaries.  
Property boundaries accuracy: +/-1m in urban areas, +/-30m in rural areas.  
Datum: NZGD 2000  
Coordinate System: NZGD 2000 New Zealand Transverse Mercator  
This map was produced with ArcGIS Pro (Esri).

**Mineral Extraction Area**  
Karamea Quarry





**Legend**

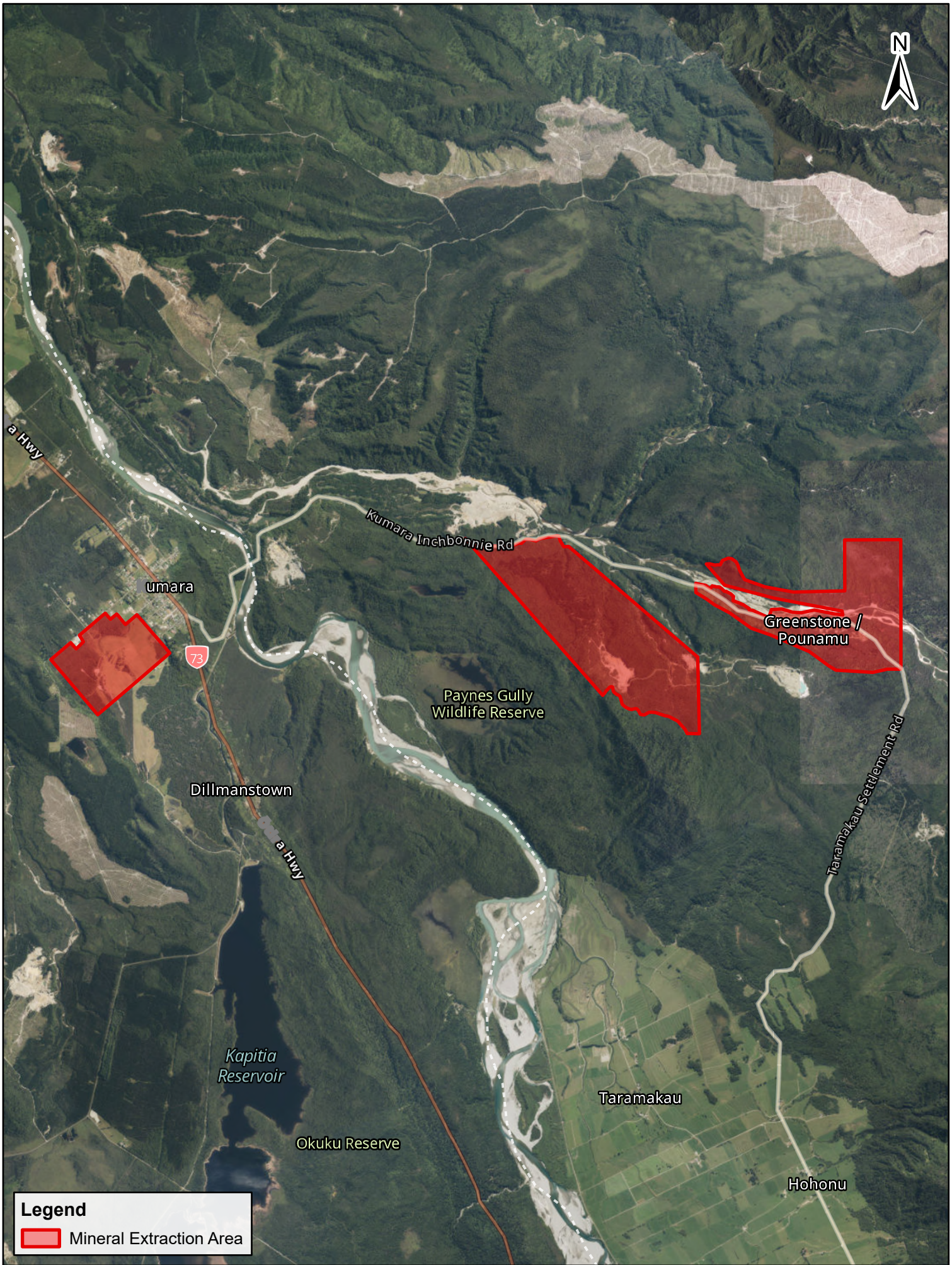
 Mineral Extraction Area



Contains data sourced from LINZ Data Service licenced for reuse under CC BY 4.0, including imagery and property boundaries.  
 Property boundaries accuracy: +/-1m in urban areas, +/-30m in rural areas.  
 Datum: NZGD 2000  
 Coordinate System: NZGD 2000 New Zealand Transverse Mercator  
 This map was produced with ArcGIS Pro (Esri).

**Mineral Extraction Area**  
 Kiwi Quarry





**Legend**

Mineral Extraction Area

**The Property Group**

Contains data sourced from LINZ Data Service licenced for reuse under CC BY 4.0, including imagery and property boundaries.  
 Property boundaries accuracy: +/-1m in urban areas, +/-30m in rural areas.  
 Datum: NZGD 2000  
 Coordinate System: NZGD 2000 New Zealand Transverse Mercator  
 This map was produced with ArcGIS Pro (Esri).

PREPARED BY	Conor McIntosh	DATE	12/04/2024	SHEET	1 OF 1	TPG REF	718509	A4 Scale	1:53,000	0	1,000 Metres
-------------	----------------	------	------------	-------	--------	---------	--------	----------	----------	---	--------------

**Mineral Extraction Area**  
 Kumara/Greenstone

**Te Tai o Poutini**  
 PLAN  
 A combined district plan for the West Coast



**Legend**

Mineral Extraction Area



Contains data sourced from LINZ Data Service licenced for reuse under CC BY 4.0, including imagery and property boundaries.  
 Property boundaries accuracy: +/-1m in urban areas, +/-30m in rural areas.  
 Datum: NZGD 2000  
 Coordinate System: NZGD 2000 New Zealand Transverse Mercator  
 This map was produced with ArcGIS Pro (Esri).

**Mineral Extraction Area**  
 Mai Mai Siding



PREPARED BY	Conor McIntosh	DATE	12/04/2024	SHEET	1 OF 1	TPG REF	718509	A4 Scale	1:2,000	0	40 Metres
-------------	----------------	------	------------	-------	--------	---------	--------	----------	---------	---	-----------

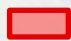


New Creek

Upper Buller Gorge Rd

Mount  
Courtney  
Reserve

**Legend**

 Mineral Extraction Area



Contains data sourced from LINZ Data Service licenced for reuse under CC BY 4.0, including imagery and property boundaries.  
Property boundaries accuracy: +/-1m in urban areas, +/-30m in rural areas.  
Datum: NZGD 2000  
Coordinate System: NZGD 2000 New Zealand Transverse Mercator  
This map was produced with ArcGIS Pro (Esri).

**Mineral Extraction Area**  
New Creek



PREPARED BY **Conor McIntosh** DATE **12/04/2024**

SHEET **1 OF 1**

TPG REF **718509**

A4 Scale **1:38,000**

0  890 Metres



Haast Jackson Bay Rd

Okuru Reserve



**Legend**

Mineral Extraction Area



**The Property Group**

Contains data sourced from LINZ Data Service licenced for reuse under CC BY 4.0, including imagery and property boundaries.  
 Property boundaries accuracy: +/-1m in urban areas, +/-30m in rural areas.  
 Datum: NZGD 2000  
 Coordinate System: NZGD 2000 New Zealand Transverse Mercator  
 This map was produced with ArcGIS Pro (Esri).

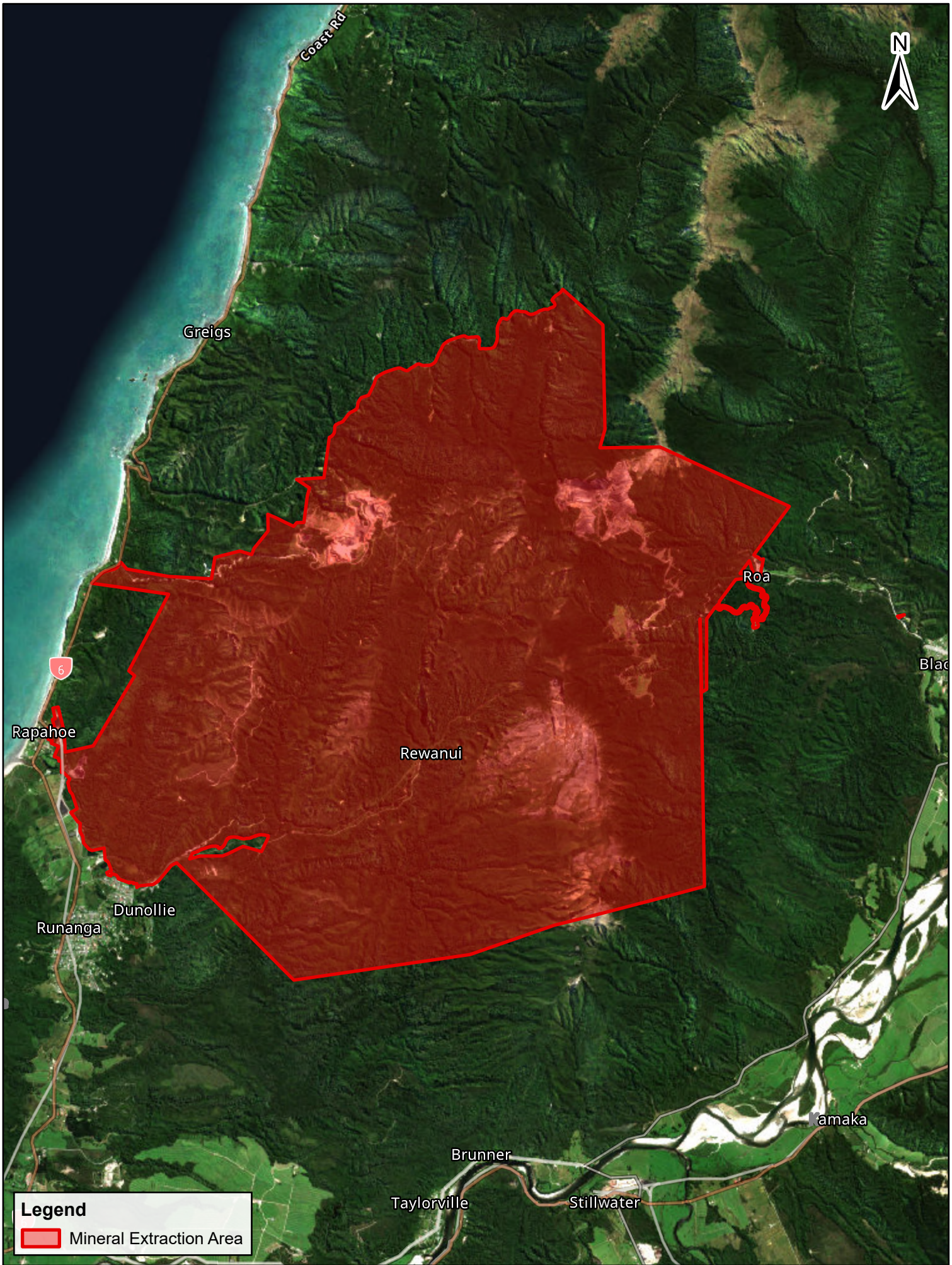
PREPARED BY	Conor McIntosh	DATE	12/04/2024	SHEET	1 OF 1	TPG REF	718509	A4 Scale	1:4,000	0	90 Metres
-------------	----------------	------	------------	-------	--------	---------	--------	----------	---------	---	-----------

**Mineral Extraction Area**  
Okuru Quarry



**Te Tai o Poutini**  
PLAN  
A combined district plan for the West Coast





**Legend**

Mineral Extraction Area



Contains data sourced from LINZ Data Service licenced for reuse under CC BY 4.0, including imagery and property boundaries.  
 Property boundaries accuracy: +/-1m in urban areas, +/-30m in rural areas.  
 Datum: NZGD 2000  
 Coordinate System: NZGD 2000 New Zealand Transverse Mercator  
 This map was produced with ArcGIS Pro (Esri).


PREPARED BY	Conor McIntosh	DATE	12/04/2024	SHEET	1 OF 1	TPG REF	718509	A4 Scale	1:73,000	0	1,000 Metres
-------------	----------------	------	------------	-------	--------	---------	--------	----------	----------	---	--------------

**Mineral Extraction Area**  
 Paparoa Coal Field - Rajah, Roa &





**Legend**

 Mineral Extraction Area

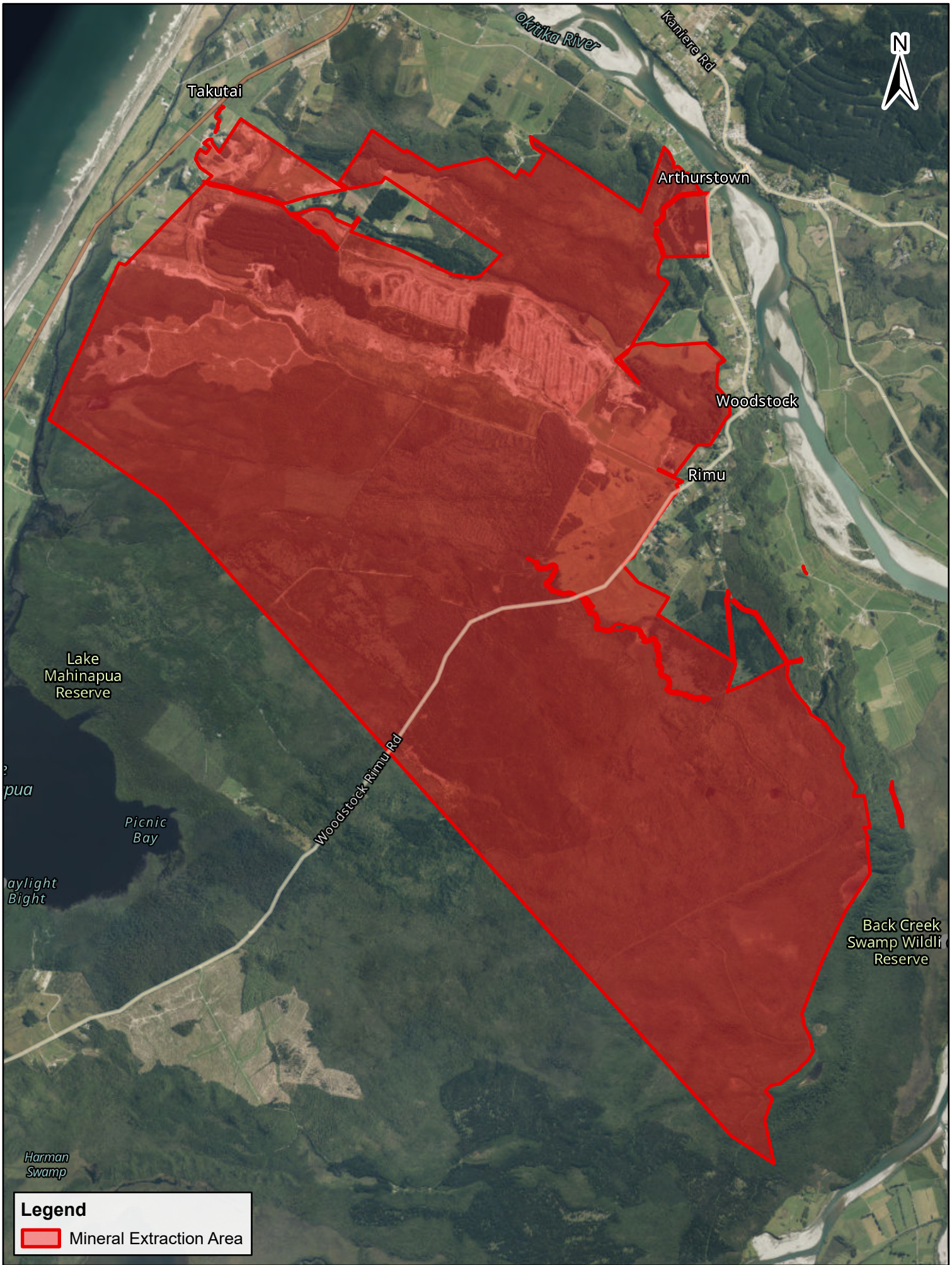


Contains data sourced from LINZ Data Service licenced for reuse under CC BY 4.0, including imagery and property boundaries.  
 Property boundaries accuracy: +/-1m in urban areas, +/-30m in rural areas.  
 Datum: NZGD 2000  
 Coordinate System: NZGD 2000 New Zealand Transverse Mercator  
 This map was produced with ArcGIS Pro (Esri).

**Mineral Extraction Area**  
 Reefton Distribution Centre



PREPARED BY	Conor McIntosh	DATE	12/04/2024	SHEET	1 OF 1	TPG REF	718509	A4 Scale	1:3,000	0	70 Metres
-------------	----------------	------	------------	-------	--------	---------	--------	----------	---------	---	-----------



**Legend**

Mineral Extraction Area

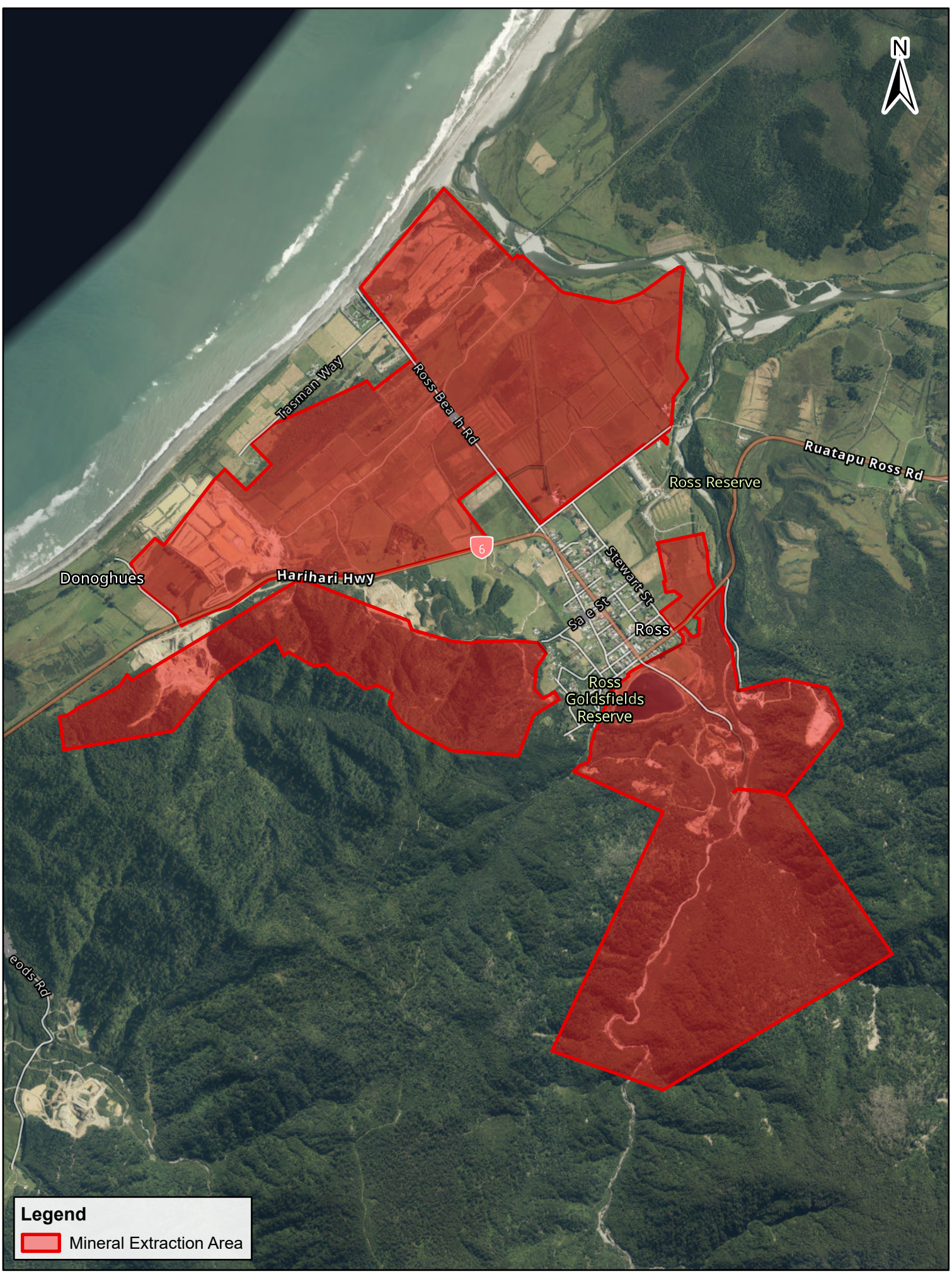


Contains data sourced from LINZ Data Service licenced for reuse under CC BY 4.0, including imagery and property boundaries.  
 Property boundaries accuracy: +/-1m in urban areas, +/-30m in rural areas.  
 Datum: NZGD 2000  
 Coordinate System: NZGD 2000 New Zealand Transverse Mercator  
 This map was produced with ArcGIS Pro (Esri).


PREPARED BY	Conor McIntosh	DATE	12/04/2024	SHEET	1 OF 1	TPG REF	718509	A4 Scale	1:43,000	0	975 Metres
-------------	----------------	------	------------	-------	--------	---------	--------	----------	----------	---	------------

**Mineral Extraction Area**  
 Rimu Channel





**Legend**

 Mineral Extraction Area



**The Property Group**

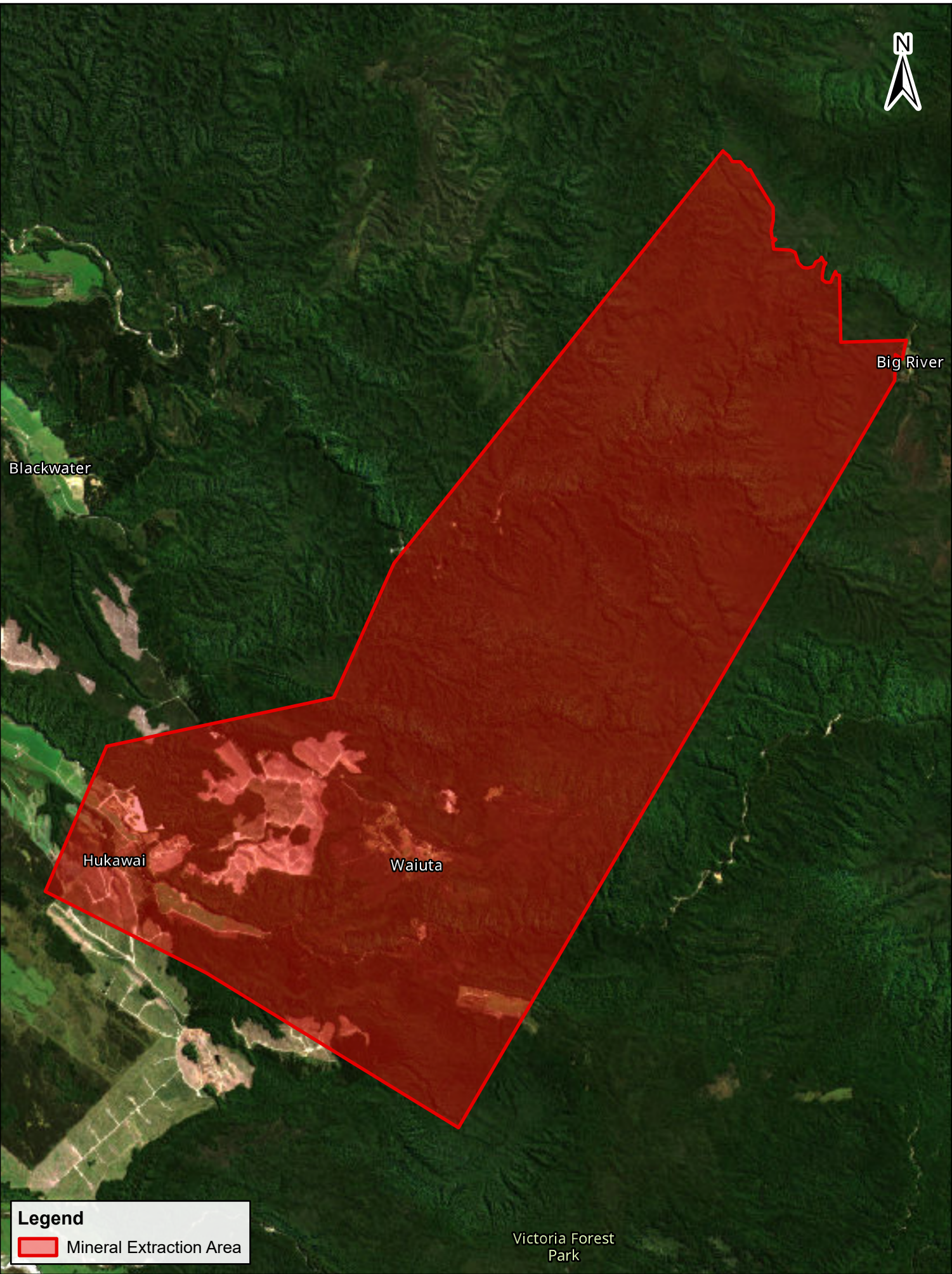
Contains data sourced from LINZ Data Service licenced for reuse under CC BY 4.0, including imagery and property boundaries.  
 Property boundaries accuracy: +/-1m in urban areas, +/-30m in rural areas.  
 Datum: NZGD 2000  
 Coordinate System: NZGD 2000 New Zealand Transverse Mercator  
 This map was produced with ArcGIS Pro (Esri).

PREPARED BY	Conor McIntosh	DATE	12/04/2024	SHEET	1 OF 1	TPG REF	718509	A4 Scale	1:26,000	0	610 Metres
-------------	----------------	------	------------	-------	--------	---------	--------	----------	----------	---	------------

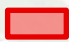
**Mineral Extraction Area**  
 Ross Gold Fields



**Te Tai o Poutini**  
 PLAN  
 A combined district plan for the West Coast



**Legend**

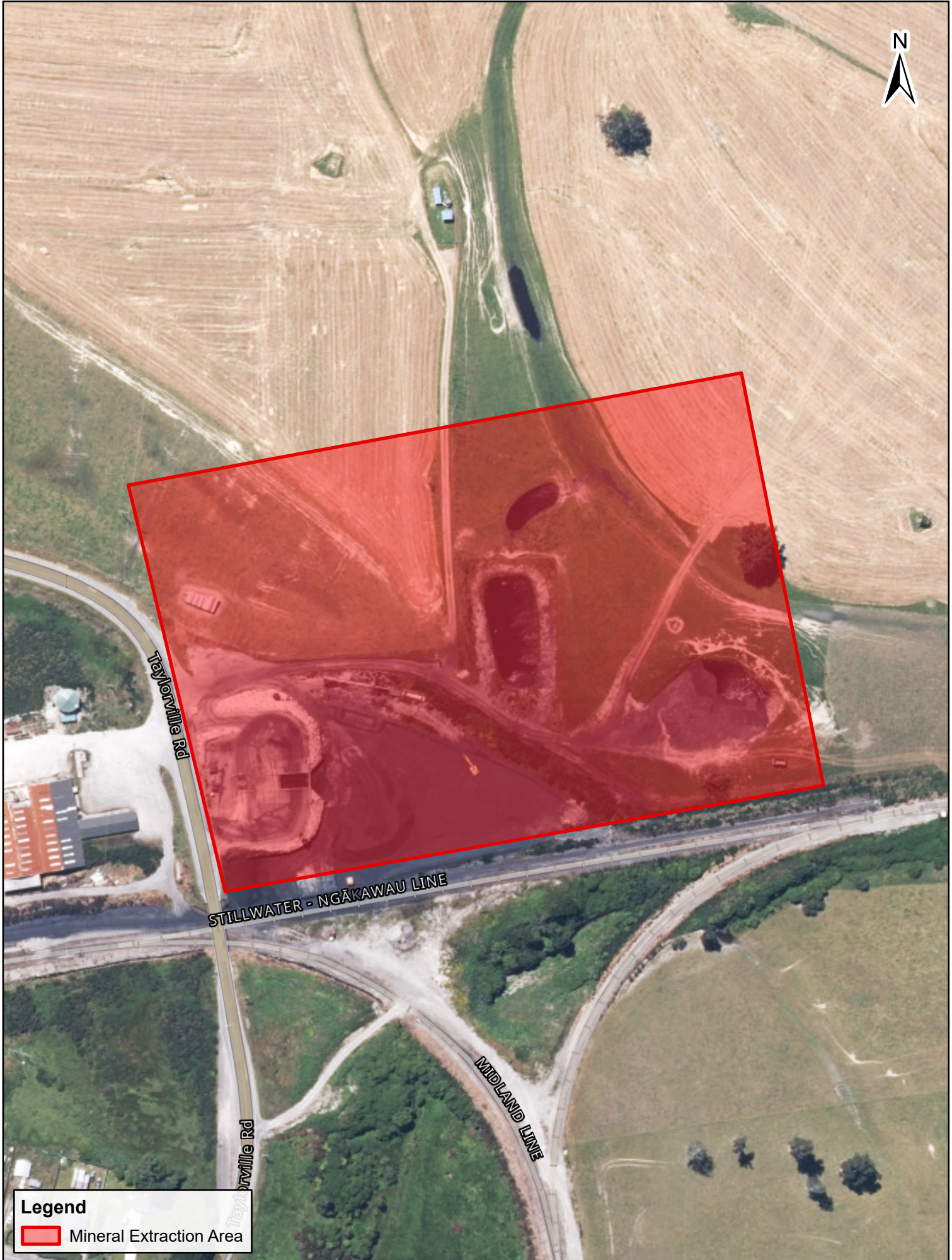
 Mineral Extraction Area

Contains data sourced from LINZ Data Service licenced for reuse under CC BY 4.0, including imagery and property boundaries.  
Property boundaries accuracy: +/-1m in urban areas, +/-30m in rural areas.  
Datum: NZGD 2000  
Coordinate System: NZGD 2000 New Zealand Transverse Mercator  
This map was produced with ArcGIS Pro (Esri).

**Mineral Extraction Area**  
Snowy River Gold Mine



PREPARED BY	Conor McIntosh	DATE	12/04/2024	SHEET	1 OF 1	TPG REF	718509	A4 Scale	1:56,000	0	1,000 Metres
-------------	----------------	------	------------	-------	--------	---------	--------	----------	----------	---	--------------




Taylorville Rd

STILLWATER - NGĀKAWAU LINE

MIDLAND LINE

Taylorville Rd

**Legend**

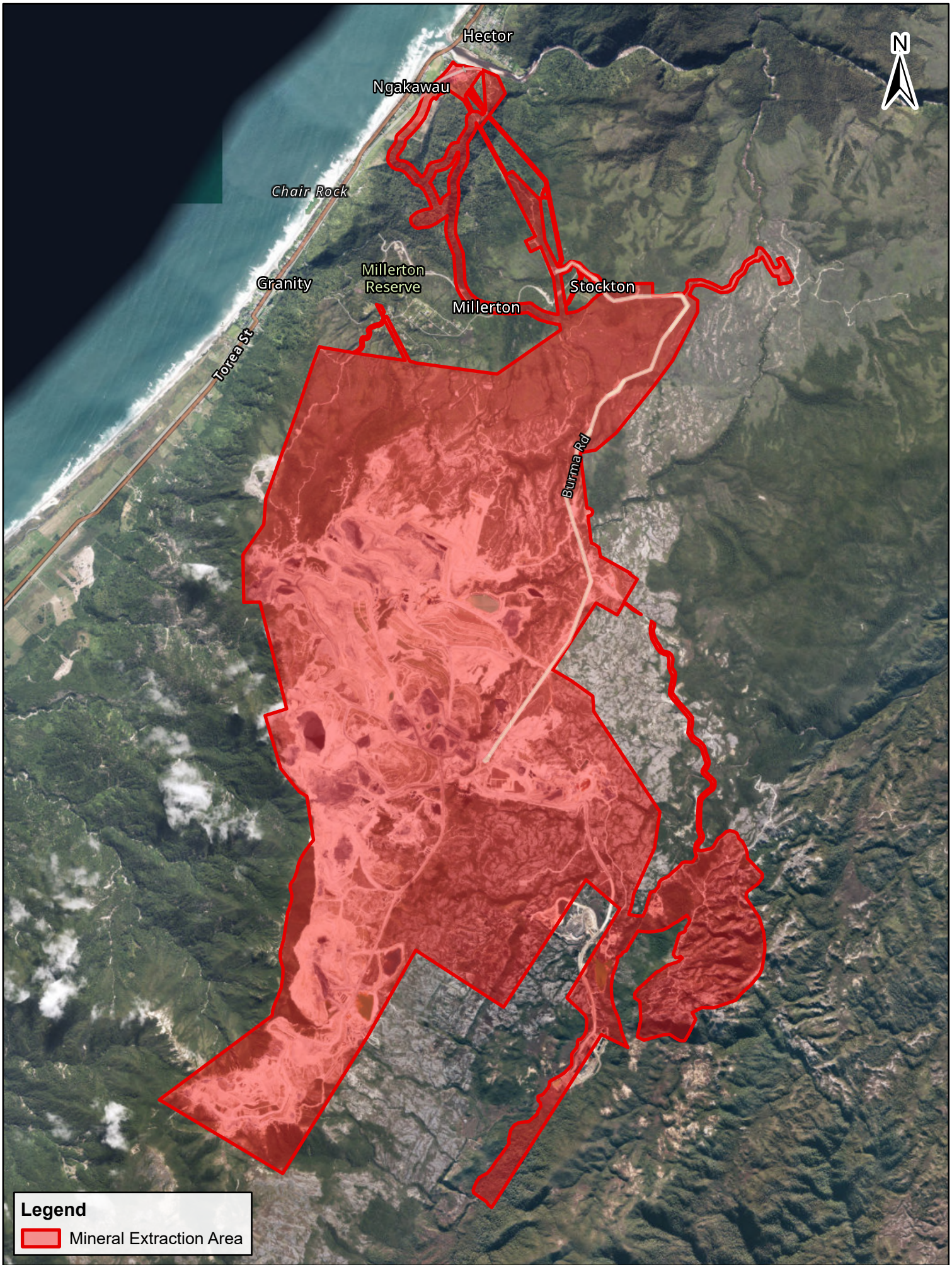
 Mineral Extraction Area



Contains data sourced from LINZ Data Service licenced for reuse under CC BY 4.0, including imagery and property boundaries.  
Property boundaries accuracy: +/-1m in urban areas, +/-30m in rural areas.  
Datum: NZGD 2000  
Coordinate System: NZGD 2000 New Zealand Transverse Mercator  
This map was produced with ArcGIS Pro (Esri).

**Mineral Extraction Area**  
Stillwater Mineral Extraction Zone





**Legend**

Mineral Extraction Area



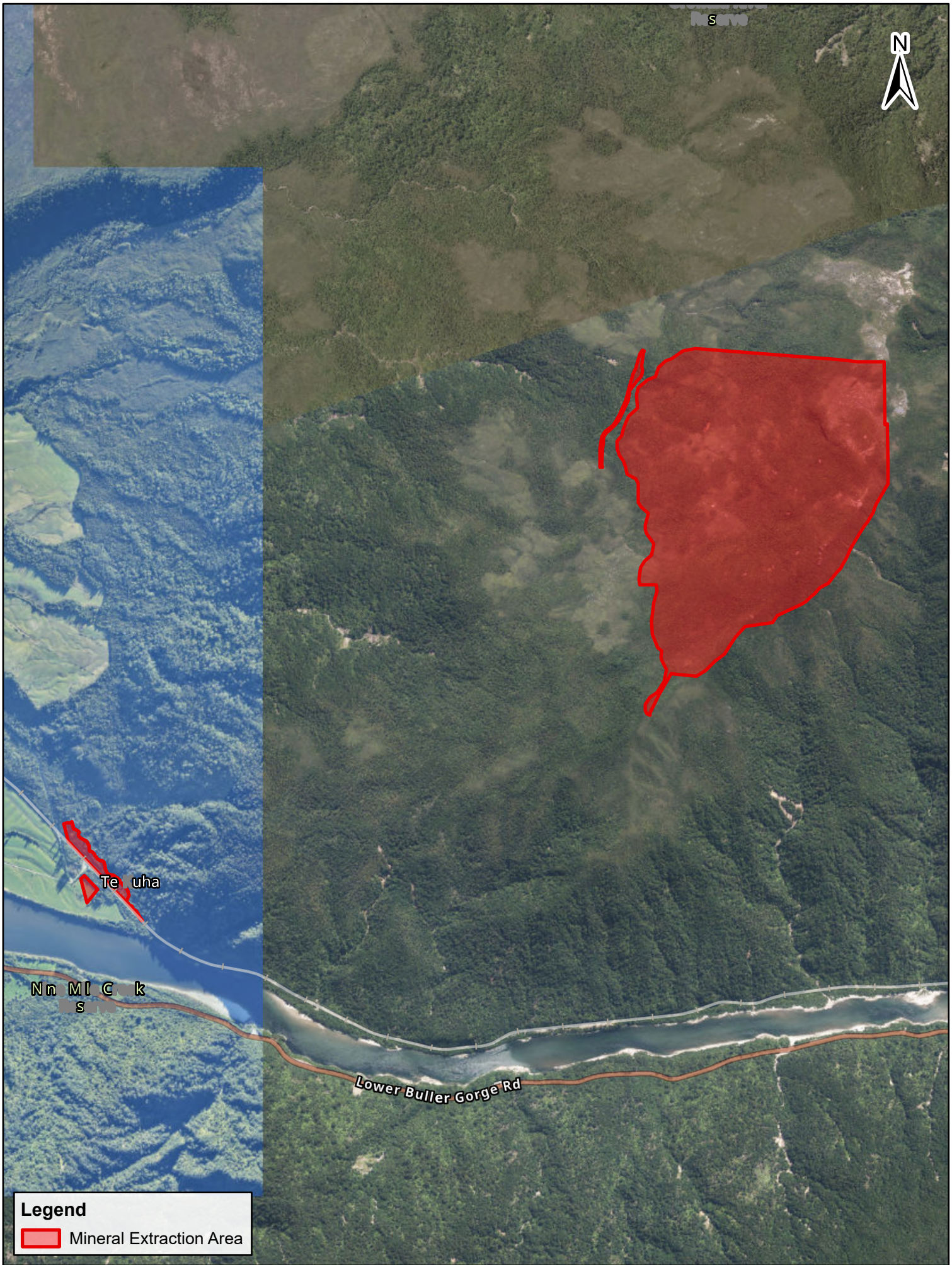
Contains data sourced from LINZ Data Service licenced for reuse under CC BY 4.0, including imagery and property boundaries.  
 Property boundaries accuracy: +/-1m in urban areas, +/-30m in rural areas.  
 Datum: NZGD 2000  
 Coordinate System: NZGD 2000 New Zealand Transverse Mercator  
 This map was produced with ArcGIS Pro (Esri).

**Mineral Extraction Area**  
**Stockton Mine**


PREPARED BY	DATE	SHEET	TPG REF	A4 Scale
Conor McIntosh	12/04/2024	1 OF 1	718509	1:50,000



0  1,000 Metres



**Legend**

 Mineral Extraction Area



Contains data sourced from LINZ Data Service licenced for reuse under CC BY 4.0, including imagery and property boundaries.  
 Property boundaries accuracy: +/-1m in urban areas, +/-30m in rural areas.  
 Datum: NZGD 2000  
 Coordinate System: NZGD 2000 New Zealand Transverse Mercator  
 This map was produced with ArcGIS Pro (Esri).

**Mineral Extraction Area**  
Te Kuha

