



BDC39

Legend

s42A Recommended Designation

Cadastral Boundaries



GDC11

Legend

- s42A Recommended Designation
- Cadastral Boundaries



GDC21

Legend

- s42A Recommended Designation
- Cadastral Boundaries

Contains data sourced from LINZ Data Service licenced for reuse under CC BY 4.0, including imagery and property boundaries.
 Property boundaries accuracy: +/-1m in urban areas, +/-30m in rural areas.
 Datum: NZGD 2000
 Coordinate System: NZGD 2000 New Zealand Transverse Mercator
 This map was produced with ArcGIS Pro (Esri).

**Recommended Designation Extent -
 GDC Greenstone Cemetery**

PREPARED BY **Louis Worthington** DATE **27/10/2023**

SHEET 1 OF 1

A4 Scale 1:750

0 10 Metres



Te Tai o Poutini
 PLAN

A combined district plan for the West Coast



GDC67

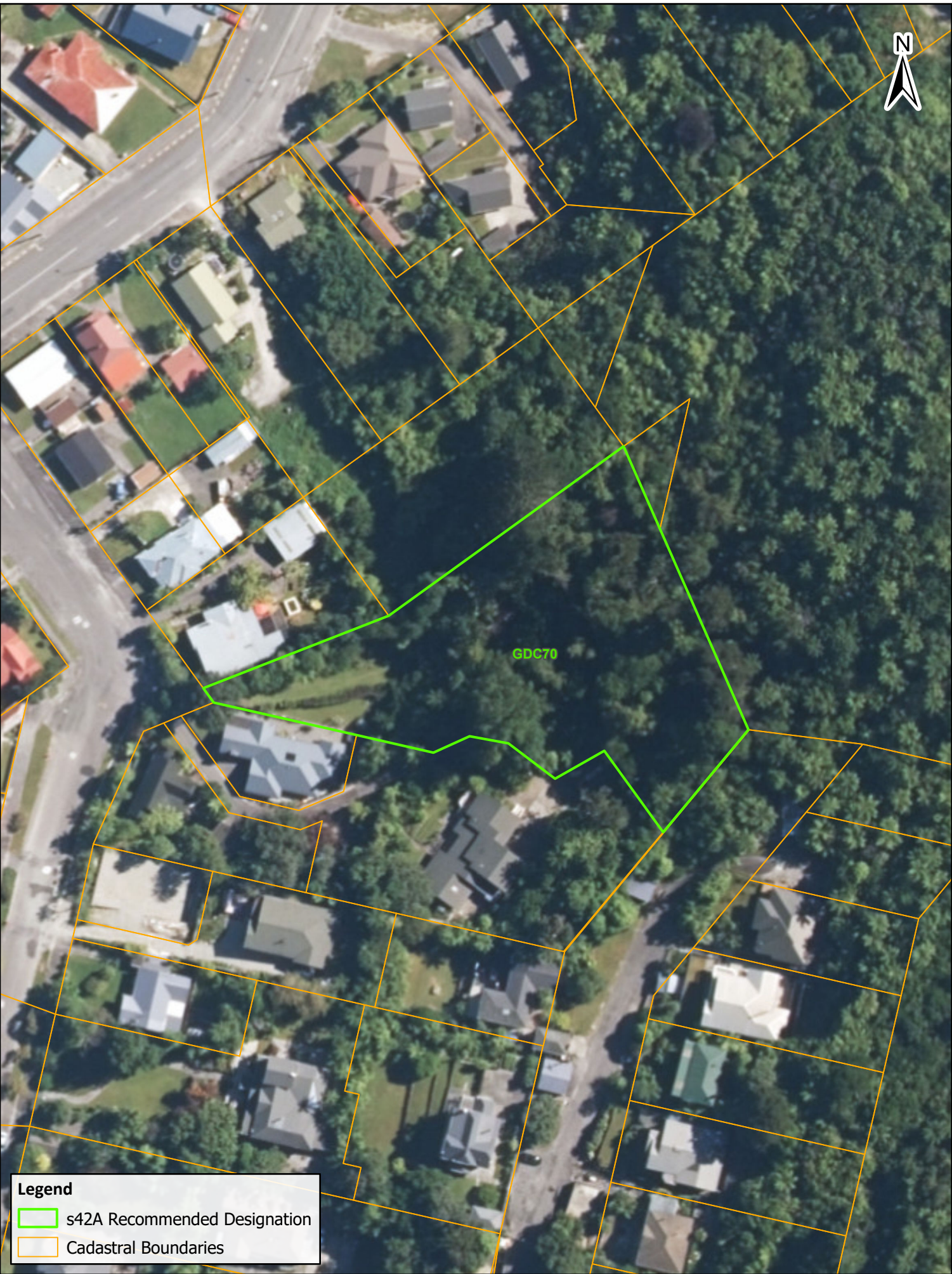
Legend

- s42A Recommended Designation
- Cadastral Boundaries



Legend

- s42A Recommended Designation
- Cadastral Boundaries



Legend

- s42A Recommended Designation
- Cadastral Boundaries



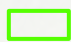
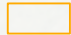
Legend

- s42A Recommended Designation
- Cadastral Boundaries



GDC73

Legend

-  s42A Recommended Designation
-  Cadastral Boundaries



Contains data sourced from LINZ Data Service licenced for reuse under CC BY 4.0, including imagery and property boundaries.
 Property boundaries accuracy: +/-1m in urban areas, +/-30m in rural areas.
 Datum: NZGD 2000
 Coordinate System: NZGD 2000 New Zealand Transverse Mercator
 This map was produced with ArcGIS Pro (Esri).

**Recommended Designation Extent -
 GDC Recreation Reserve – Playing Fields
 Pt Mclean Park**

PREPARED BY **Louis Worthington** DATE **27/10/2023**

SHEET 1 OF 1

A4 Scale 1:1,500

0  30 Metres



Legend

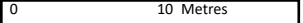
- July 2022 Proposed Designation
- s42A Removed Designation
- Cadastral Boundaries



Te Tai o Poutini
PLAN
A combined district plan for the West Coast

Contains data sourced from LINZ Data Service licenced for reuse under CC BY 4.0, including imagery and property boundaries.
Property boundaries accuracy: +/-1m in urban areas, +/-30m in rural areas.
Datum: NZGD 2000
Coordinate System: NZGD 2000 New Zealand Transverse Mercator
This map was produced with ArcGIS Pro (Esri).

Recommended deletion of MCOR3

PREPARED BY **Louis Worthington** | DATE **26/10/2023** | SHEET **1 OF 1** | **A4 Scale 1:500** | 0  10 Metres



MEDU35

Legend

- s42A Recommended Designation
- Cadastral Boundaries



A combined district plan for the West Coast

Contains data sourced from LINZ Data Service licenced for reuse under CC BY 4.0, including imagery and property boundaries.
 Property boundaries accuracy: +/-1m in urban areas, +/-30m in rural areas.
 Datum: NZGD 2000
 Coordinate System: NZGD 2000 New Zealand Transverse Mercator
 This map was produced with ArcGIS Pro (Esri).

Recommended Designation Extent – MEDU35 St Mary’s School - NOR

PREPARED BY **Louis Worthington** DATE **26/10/2023**

SHEET 1 OF 1

A4 Scale 1:1,000

0 20 Metres



Legend

- s42A Recommended Designation
- Cadastral Boundaries

Contains data sourced from LINZ Data Service licenced for reuse under CC BY 4.0, including imagery and property boundaries.
 Property boundaries accuracy: +/-1m in urban areas, +/-30m in rural areas.
 Datum: NZGD 2000
 Coordinate System: NZGD 2000 New Zealand Transverse Mercator
 This map was produced with ArcGIS Pro (Esri).

**Recommended Designation Extent -
RNZ Cape Foulwind Transmission Site**

PREPARED BY **Louis Worthington** DATE **27/10/2023**

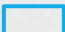
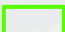

SHEET 1 OF 1

A4 Scale 1:2,000

0 40 Metres



Legend

-  July 2022 Proposed Designation
-  s42A Recommended Designation
-  Cadastral Boundaries

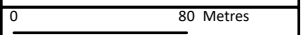
Contains data sourced from LINZ Data Service licenced for reuse under CC BY 4.0, including imagery and property boundaries.
Property boundaries accuracy: +/-1m in urban areas, +/-30m in rural areas.
Datum: NZGD 2000
Coordinate System: NZGD 2000 New Zealand Transverse Mercator
This map was produced with ArcGIS Pro (Esri).

**Recommended Designation Extent –
WDC7 Water Supply Storage and Treatment**

PREPARED BY **Louis Worthington** DATE **26/10/2023**

SHEET 1 OF 1

A4 Scale 1:3,500

0  80 Metres