



SUBMISSIONS ON TE TAI O POUTINI PLAN
Under Clause 6 of the First Schedule of the Resource Management Act 1991

To: West Coast Regional Council

By email: info@tppp.nz

Submitter: Whyte Gold Limited

Address for Service: Tai Poutini Resources Ltd
PO Box 257
Greymouth 7840

Jorja.hunt@tpri.co.nz

1. Submitters

- 1.1 On behalf of Whyte Gold Limited (the submitter), we submit on the Proposed Te Tai o Poutini Plan.
- 1.2 The submitter could not gain an advantage in trade competition through this submission.
- 1.3 The submitter owns multiple land holdings in the West Coast Region, and in addition has numerous mining permits, resource consents, and other lawfully established and operating activities.
- 1.4 The reasons for the submission and the relief sought are set out below and comprehensive provision by provision detail is included in the attached table in the template provided by the West Coast Regional Council.
- 1.5 The suggested revisions do not limit the generality of the reasons for the submission.
- 1.6 The submitter wishes to be heard in support of this submission.
- 1.7 The reasons for the submission and the relief sought are set out below.
- 1.8 The submitter will consider presenting a joint case with others presenting similar submissions.



1.9 The specific provisions which this submission relates to are:

- 1.9.1 Whole Plan
- 1.9.2 Introduction – Description of the Districts
- 1.9.3 How The Plan Works – Minerals Extraction Zone
- 1.9.4 Definitions
- 1.9.5 Strategic Direction Overview
- 1.9.6 MIN – O1
- 1.9.7 MIN – O2
- 1.9.8 MIN – O3
- 1.9.9 MIN – O4
- 1.9.10 MIN – O6
- 1.9.11 NENV – O3
- 1.9.12 NENV – O4
- 1.9.13 POU – P10
- 1.9.14 Ecosystems and Indigenous Biodiversity
- 1.9.15 ECO – O2
- 1.9.16 ECO – O4
- 1.9.17 ECO – P2
- 1.9.18 ECO – P3
- 1.9.19 ECO – P6
- 1.9.20 ECO – P7
- 1.9.21 ECO – P9
- 1.9.22 ECO – R1
- 1.9.23 ECO – R5
- 1.9.24 NC – O1
- 1.9.25 NC – O3
- 1.9.26 NC – P2
- 1.9.27 NC – P3
- 1.9.28 NC – R3
- 1.9.29 EW – O1
- 1.9.30 EW – P1
- 1.9.31 EW – R1
- 1.9.32 EW – R2
- 1.9.33 EW – P4
- 1.9.34 EW – R6
- 1.9.35 EW – R8
- 1.9.36 LIGHT – O1
- 1.9.37 LIGHT – P1
- 1.9.38 LIGHT – P2
- 1.9.39 LIGHT – R1
- 1.9.40 LIGHT – R2
- 1.9.41 Open space and Recreation Zones
- 1.9.42 Open space and Recreation Zones Overview
- 1.9.43 OSRZ – P10

- 1.9.44 OSRZ – P14
- 1.9.45 OSZ – R20
- 1.9.46 OSZ – R22
- 1.9.47 GIZ – R6
- 1.9.48 GIZ – R8
- 1.9.49 RURZ – O1
- 1.9.50 RURZ – O5
- 1.9.51 RURZ – P1
- 1.9.52 RURZ – P3
- 1.9.53 RURZ – P15
- 1.9.54 RURZ – P18
- 1.9.55 RURZ – P19
- 1.9.56 RURZ – P21
- 1.9.57 RURZ – P22
- 1.9.58 RURZ – P23
- 1.9.59 RURZ – P24
- 1.9.60 RURZ – P25
- 1.9.61 GRUZ – R11
- 1.9.62 GRUZ – R12
- 1.9.63 GRUZ – R18
- 1.9.64 GRUZ – R24
- 1.9.65 GRUZ – R25
- 1.9.66 GRUZ – R32
- 1.9.67 Special Purpose Zones - Mineral Extraction Zone: Overview
- 1.9.68 MINZ – O1
- 1.9.69 MINZ – O2
- 1.9.70 MINZ – P1
- 1.9.71 MINZ – P2
- 1.9.72 MINZ – P3
- 1.9.73 MINZ – P4
- 1.9.74 MINZ – P5
- 1.9.75 MINZ – P6
- 1.9.76 MINZ – P7
- 1.9.77 MINZ – P8
- 1.9.78 MINZ – R2
- 1.9.79 MINZ – R3
- 1.9.80 MINZ – R10
- 1.9.81 MINZ Maps – Amend
- 1.9.82 MAPS/ZONING – REZONE REQUEST

2. Background to the submission

2.1 Whyte Gold Limited holds a number of mining, exploration permits and resource consents on across various parcels of land owned by both The Crown and Ngai Tahu Forestry on the West Coast on for the purpose of mining gold including EP60458, MP41818, and MP41871 at

Dungaville and mines on behalf of Fitzherbert Investments Limited at the Rimu Channel under MP60367. A map showing the location of the submitter's interests is enclosed as **Attachment A Dunganville** and **Attachment B Rimu Channel**.

2.2 The submitters have land or other interests which are located within the General Rural Zone, Open Space Zone, Natural Open Space Zone, and Mineral Extraction Zone.

3. Summary of submission

3.1 The submitters have carefully considered the Proposed Plan and are supportive of a number of provisions which generally align with the provisions that the submitters were consulted on during the pre-notification phase of the Proposed Plan development, in particular the inclusion of the Minerals Extraction Zone over the Mining and Exploration Permits at Dunganville and the Minerals Extraction Zone at the Rimu Channel. However, a number of provisions have been included which were not consulted upon, and which affect the application of the provisions which were consulted on. There are also additional areas which have Minerals Permits granted for mineral extraction which the submitter considers should be included in the Minerals Extraction Zone in the Rimu Channel. A map showing the area which the submitter requests to be rezoned is enclosed as **Attachment B**.

3.2 The legal descriptions of the additional areas which the submitter considers should be included in the Minerals Extraction Zone includes:

3.2.1 Rimu Channel: RS 6030 LOT 1 2 DP 3690 LOT 1 DP 3393 LOT 1 DP 389075 SEC 2 SO
12415 BLKS V VII MAHINAPUA SD BLKS I V KANIERE SD

3.3 As a result, the Proposed Plan contains a number of provisions which are restrictive for both current and future mining operations.

3.4 Minerals extraction activities (and prospecting and exploration) are limited geographically – they can only occur where the resource exists and are thus have functional and operational requirements to operate within the Proposed Plan overlays.

3.5 The submitter considers that the Proposed Plan does not entirely give effect to the enabling framework set by the recent West Coast Regional Policy Statement 2020, which provides for economic development and activity, while also seeking to protect the environment.

3.6 The submission seeks specific relief to ensure there is a consenting pathway for the submitters' current and future alluvial mining operations, and recognition of the significance of the mining industry to the West Coast Region as it underpins economic and social wellbeing. Mining and the industries which support it provide job stability and high wage employment, retention of talent and people, foster social connections and are an absolutely vital component of the West Coast community. The Proposed Plan needs to support this vital industry, as the preceding three District Plans have done for the past 15 years.

3.7 The submission supports aspects of the Proposed Plan which recognise the importance of the mining industry and seeks amendments to aspects which are problematic or restrictive.

4. Reasons for the submission

4.1 The specific reasons for each submission point on specific provisions are included in **Attachment C**.

5. Relief sought

5.1 The specific relief sought is enclosed in the table attached as Attachment C to this submission.

5.2 Alternative, consequential, or necessary additional relief to give effect to the matters raised generally in this submission, and to address any matters affected by introduced by national environmental standards and national policy statements.



Signed on behalf of **Whyte Gold Limited**

Jorja Hunt

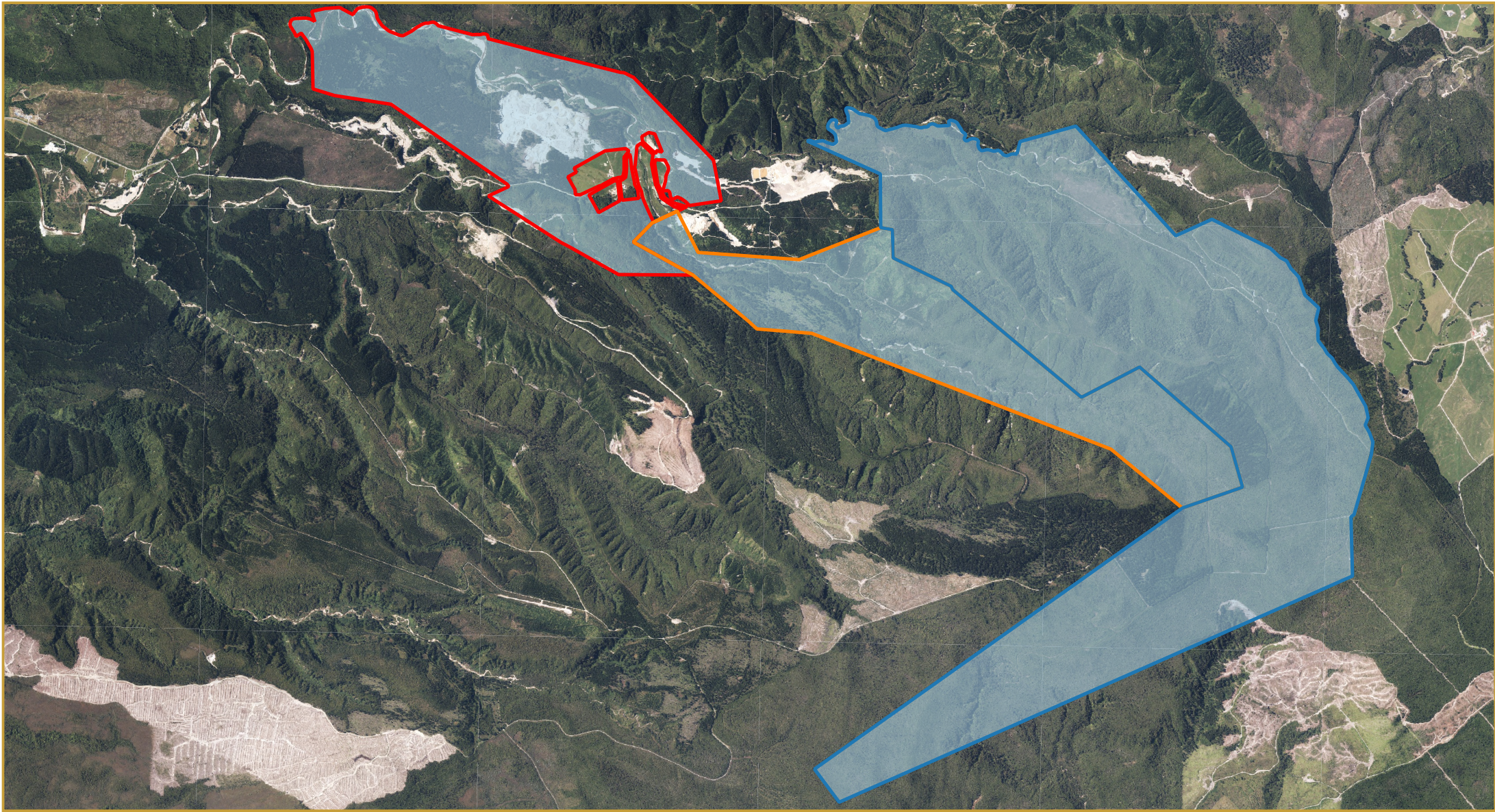
Resource Management Consultant

Tai Poutini Resources Ltd

Attachment A: Map of Submitter's interests at Dunganville

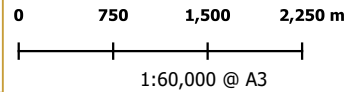
Attachment B: Map of Submitter's interests at Rimu Channel

Attachment C: TTPP Relief Sought Table



TTPP Plan Submission
Dunganville Mineral Extraction Zone

Produced for: Whyte Gold
 by Luke McNeish (TPRL) on 09/11/2022

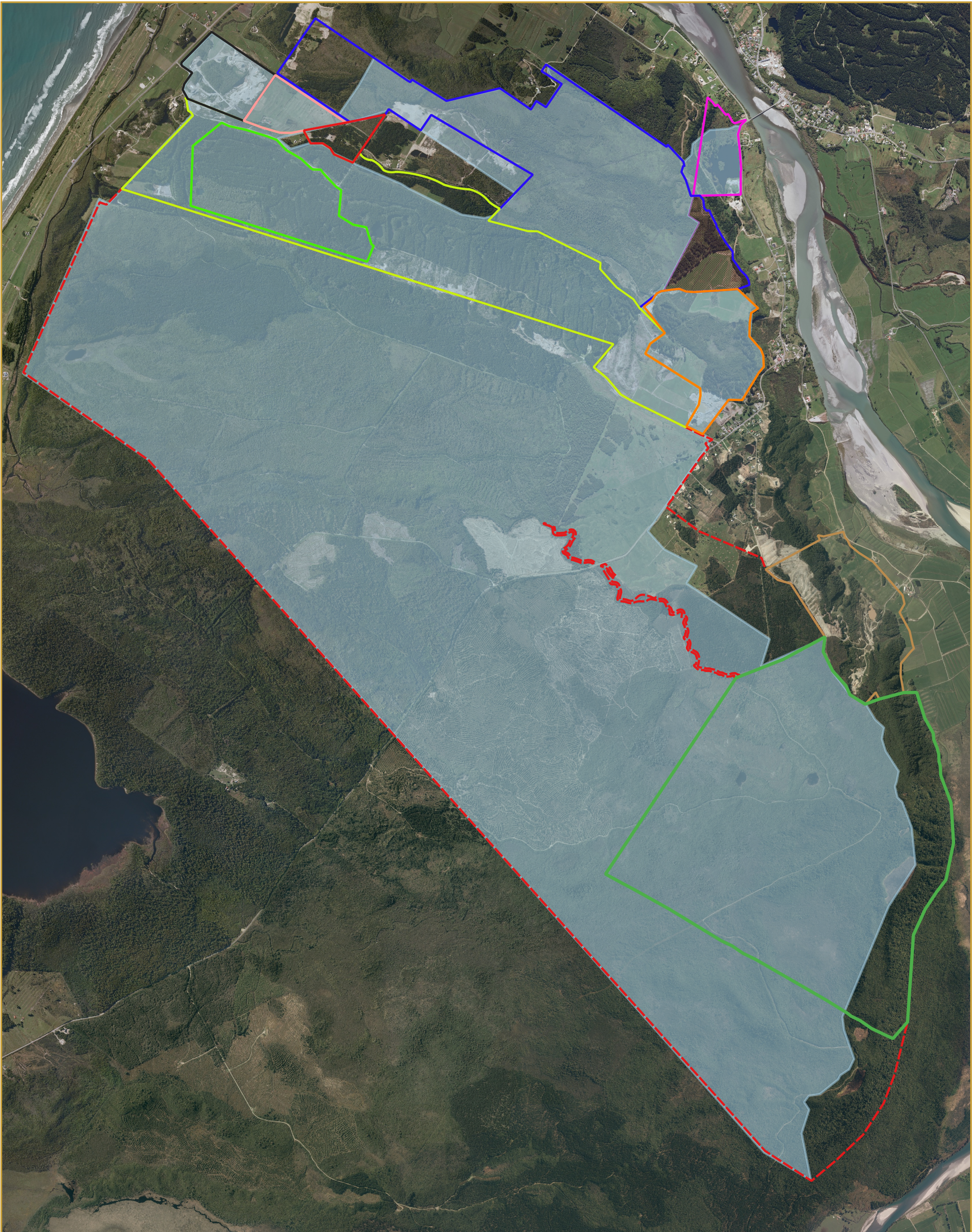


Projection: WSG84 / NZTM2000
 Background Imagery: ESRI Satellite
 Data Sources: LINZ, Client and or TPRL Data

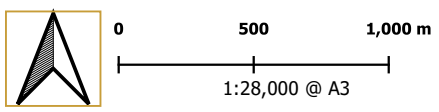
Legend:

- ▭ EP 60458
- ▭ MP 41818
- ▭ MP 41871
- ▭ Dunganville Mineral Extraction Zone

This map/plan has been produced by Tai Poutini Resources Ltd for the purpose of providing information as part of the agreed upon scope and services with the client. This graphic is solely for the client. Any use or reliance on any information within by a third party without prior approval by the client is at their own risk. At the time of production, all information is assumed accurate. Tai Poutini Resources Ltd holds no accountability for any liability or action arising from any incomplete or inaccurate information within this map/plan. © TPRL 2021



This map/plan has been produced by Tai Poutini Resources Ltd for the purpose of providing information as part of the agreed upon scope and services with the client. This graphic is solely for the client. Any use or reliance on any information within by a third party without prior approval by the client is at their own risk. At the time of production, all information is assumed accurate. Tai Poutini Resources Ltd holds no accountability for any liability or action arising from any incomplete or inaccurate information within this map/plan.



Projection: WSG84 / NZTM2000
Background Imagery: ESRI Satellite
Data Sources: LINZ, Client and/or TPRL Data

Legend:

- MP 60383
- MP 57527
- MP 60598
- MP 41942
- MP 41354
- EP 60761
- MP 60367 Fitzherbert Investments
- MP 60369
- MP 60367
- MP 41539
- EP 60567
- Rimu Channel Minerals Extraction Area
- Mineral Extraction Zone Extension



Submitter name: Whyte Gold & Iain Whyte
 Contact person: Jorja Hunt, Tai Poutini Resources
 Contact email: jorja.hunt@tpri.co.nz

Instructions: This spreadsheet template has been made available to assist submitters wishing to make submissions on a significant number of provisions in the Proposed Plan.

If you are using this spreadsheet, please also complete a submission form with the details of the submitter. This can be done by either:

1. downloading and completing a submission form from the Council's website and lodging the form and this spreadsheet via email to info@tppp.nz; or
2. using the online submission tool accessible from the Council's website to upload this document as a supporting document. If you choose this method, please add one submission point to your online submission and select [General] as the Plan Section and [General] as the Provision.

To add your submission points to this spreadsheet, please scroll to the relevant Plan Section and click the '+' symbol to expand the group to show all of the provisions within that section. In the row containing the provision you wish to submit on, select one of the options from the Support/oppose column (click in the relevant cell and an arrow button will appear that presents a dropdown list). Add the reasons and the decision you seek in the next two columns. Please ensure you add both reasons and decision sought as these are an important part of your submission. If you are asking for a new provision to be added to a section, please include that in the row for the first provision in that section (the spreadsheet does not allow new rows to be added). Similarly, if you wish to make a submission that relates to a whole section of the Plan, please include that in row for the first provision in that section.

If you require any assistance with using this spreadsheet, please contact the District Plan team at info@tppp.nz.

Plan section	Provision	Support Oppose	Reasons	Decision sought
[General]				
Whole Plan				
Whole Plan	Whole plan	Neutral	To enable alternative relief which may give effect to the matters in the subm	Alternative, consequential, or necessary additional relief to give effect to the matters raised generally in this submission.
Introduction Section				
Introduction	Introduction			
Introduction	Mihi			
Introduction	He Mihi			
Introduction	Description of the Districts	Support	This section of the Proposed Plan sets out the history of the three districts th	Retain as notified.
How The Plan Works Section				
How The Plan Works	How The Plan Works			
How The Plan Works	Satutory Context			
How The Plan Works	Figure 1 RMA Plan relationships			
How The Plan Works	Figure 2 RMA responsibilities and where they have effect			
How The Plan Works	Te Tiriti o Wāitangi (Treaty of Waitangi) and the Resource Management Act			
How The Plan Works	General Approach			
How The Plan Works	Table 1: Classes of Activities			
How The Plan Works	Step 1 - Check the planning maps			
How The Plan Works	Step 2 - Locate the relevant zone rules			
How The Plan Works	Step 3 - Locate the relevant district-wide rules			
How The Plan Works	Step 4 - Check the relevant standards			
How The Plan Works	Step 5 - Apply for resource consent			
How The Plan Works	Table 2: National Environmental Standards and rules in Te Tai o Poutini Plan			
How The Plan Works	Notification			
How The Plan Works	Information to be submitted with resource consents			
How The Plan Works	Legal effect of Rules			
How The Plan Works	Cross Boundary Matters			
How The Plan Works	Management of Cross Boundary Matters			
How The Plan Works	Relationships between spatial layers			
How The Plan Works	Spatial layer name			
How The Plan Works	Zone			
How The Plan Works	Overlay			
How The Plan Works	Precinct			
How The Plan Works	Specific controls			
How The Plan Works	Development area			
How The Plan Works	Designation			
How The Plan Works	Heritage Order			
How The Plan Works	Residential Zone Discriptions			
How The Plan Works	General Residential Zone			
How The Plan Works	Large Lot Residential Zone			
How The Plan Works	Medium Density Residential Zone			
How The Plan Works	Residential Zones			
How The Plan Works	Rural Zone Descriptions			
How The Plan Works	General Rural Zone			
How The Plan Works	Rural Lifestyle Zone			
How The Plan Works	Settlement Zone			
How The Plan Works	Rural Zones			
How The Plan Works	Commercial and Mixed Use Zone Descriptions			
How The Plan Works	Commercial Zone			
How The Plan Works	Mixed Use Zone			
How The Plan Works	Neighbourhood Centre Zone			
How The Plan Works	Town Centre Zone			
How The Plan Works	Commercial and Mixed Use Zones			
How The Plan Works	Industrial Zone Descriptions			
How The Plan Works	General Industrial Zone			
How The Plan Works	Heavy Industrial Zone			
How The Plan Works	Light Industrial Zone			
How The Plan Works	Industrial Zones			
How The Plan Works	Special Purpose Zone Descriptions			
How The Plan Works	Airport Zone			
How The Plan Works	Buller Coalfield Zone			
How The Plan Works	Future Urban Zone			
How The Plan Works	Hospital Zone			
			Amend the explanation of the Mineral Extraction Zone as follows:	
				Areas where mineral extraction and ancillary activities are <u>enabled and</u>
How The Plan Works	Mineral Extraction Zone	Amend	The purpose of the Mineral Extraction Zone is to reflect that mineral extracti	expected to be the predominant use.
How The Plan Works	Māori Purpose Zone			
How The Plan Works	Port Zone			
How The Plan Works	Stadium Zone			
How The Plan Works	Scenic Visitor Zone			
How The Plan Works	Special Purpose Zones			
How The Plan Works	Open Space and Recreation Zone Descriptions			
How The Plan Works	Natural Open Space Zone			
How The Plan Works	Open Space Zone			
How The Plan Works	Sport and Active Recreation Zone			
How The Plan Works	Open Space and Recreation Zones			
How The Plan Works	Precincts			
How The Plan Works	Greyouth Town Centre Precinct			
How The Plan Works	Hokitika Town Centre Precinct			
How The Plan Works	Reefton Town Centre Precinct			
How The Plan Works	Westport Town Centre Precinct			
How The Plan Works	Settlement Centre Precinct			
How The Plan Works	Rural Residential Precinct			
How The Plan Works	Coastal Settlement Precinct			
How The Plan Works	Community Living Precinct			

Interpretation	GROUND LEVEL		
Interpretation	HABITABLE ROOM		
Interpretation	HEALTHCARE AND MEDICAL ACTIVITIES		
Interpretation	HEAVY VEHICLE		
Interpretation	HEIGHT		
Interpretation	HERITAGE FABRIC		
Interpretation	HERITAGE PROFESSIONAL		
Interpretation	HERITAGE RESOURCE		
Interpretation	HISTORIC HERITAGE		
Interpretation	HOME BUSINESS		
Interpretation	HOMESTAY		
Interpretation	INDIGENOUS VEGETATION CLEARANCE		
Interpretation	INDUSTRIAL ACTIVITY	Support	The submitter supports the inclusion of the definition of industrial activity frc Retain as notified.
Interpretation	INFRASTRUCTURE		
Interpretation	INTENSIVE INDOOR PRIMARY PRODUCTION		
Interpretation	IWI/PAPATIPU RŪNANGA MANAGEMENT PLAN		
Interpretation	LAeq		
Interpretation	LAF(max)		
Interpretation	LAKE		
Interpretation	LAND DISTURBANCE		
Interpretation	LARGE SCALE		
Interpretation	LAWFULLY ESTABLISHED		
Interpretation	MAIN STREET FRONTAGE		
Interpretation	MAINTENANCE		
Interpretation	MĀORI LAND		
Interpretation	MĀORI PURPOSE ACTIVITIES		
Interpretation	MINERAL		
Interpretation	MINERAL EXPLORATION	Amend	The submitter supports the inclusion of the mineral exploration defintion, ho
Interpretation	MINERAL EXTRACTION	Amend	has the same meaning as in the Crown Minerals Act 1991 (as set out below) ... includes any drilling, dredging or excavations (whether surface or subsurface) and any ancillary activities that are reasonably necessary to determine the nature and size of a mineral deposit.
Interpretation	MINERAL EXTRACTION MANAGEMENT PLAN		The definition of 'Mineral Extraction' is supported. However, the submitter si ... and includes ancillary activities such as earthworks, indigenous vegetation clearance/vegetation clearance, landscaping and rehabilitation works ...
			has the same meaning as in the Crown Minerals Act 1991 (as set out below)
			...
			iii. Taking samples by hand or hand held methods; and
			iv. Taking small samples offshore by low-impact mechanical methods; and
			v. ancillary activities reasonably necessary to identify land likely to contain
Interpretation	MINERAL PROSPECTING	Amend	The submitter supports the inclusion of the mineral prospecting definition, hc
Interpretation	MINIMUM LOT SIZE		mineral deposits or occurrences.
Interpretation	MINOR RESIDENTIAL UNIT		
Interpretation	NATIONAL GRID		
Interpretation	NATIONAL GRID SUBDIVISION CORRIDOR		
Interpretation	NATIONAL GRID YARD		
Interpretation	NATURAL HAZARD MITIGATION ACTIVITIES		
Interpretation	NATURAL HAZARD MITIGATION STRUCTURE		
Interpretation	NET SITE AREA		
Interpretation	NETWORK UTILITY OPERATOR		
Interpretation	NOISE		
Interpretation	NOTIONAL BOUNDARY		
Interpretation	OFFICIAL SIGN		
Interpretation	OPEN SPACE MANAGEMENT PLAN		
Interpretation	OPERATIONAL NEED	Support	The submitter supports the inclusion of the National Planning Standards defi Retain as notified.
Interpretation	OUTDOOR LIVING SPACE		
Interpretation	OUTSTANDING COASTAL ENVIRONMENT		
Interpretation	OVERLAY CHAPTER		
Interpretation	PAPAĀINGA		
Interpretation	PAPATIPU RŪNANGA		
Interpretation	PARKS FACILITIES		
Interpretation	PARKS FURNITURE		
Interpretation	POINT STRIP		
Interpretation	PORT ACTIVITIES		
Interpretation	POUTINI NGĀI TAHU		
Interpretation	POUTINI NGĀI TAHU ACTIVITIES		
Interpretation	RECREATION ACTIVITY		
Interpretation	RECONSTRUCTION		
Interpretation	RELOCATED BUILDING		
Interpretation	RELOCATION		
Interpretation	RENEWABLE ELECTRICITY GENERATION		
Interpretation	RENEWABLE ELECTRICITY GENERATION ACTIVITIES		
Interpretation	REPOSITIONING		
Interpretation	RESEARCH ACTIVITY		
Interpretation	RESIDENTIAL ACTIVITY		
Interpretation	RESIDENTIAL BUILDING		
Interpretation	RESIDENTIAL UNIT		
Interpretation	RETAIL ACTIVITY		
Interpretation	RETIREMENT VILLAGE		
Interpretation	REVERSE SENSITIVITY		
Interpretation	RIPARIAN MARGIN		
Interpretation	RIVER		
Interpretation	ROOT PROTECTION AREA		
Interpretation	RURAL INDUSTRY		
Interpretation	SENSITIVE ACTIVITY		
Interpretation	SHARED PATHWAY		
Interpretation	SIGN		
Interpretation	SIGNIFICANT ELECTRICITY DISTRIBUTION LINE		
Interpretation	SIGNIFICANT NATURAL AREA		
Interpretation	SITE		
Interpretation	SMALL SCALE		
Interpretation	STADIUM ACTIVITY		
Interpretation	STORMWATER		
Interpretation	STRUCTURE		
Interpretation	STRUCTURE PLAN		
Interpretation	SUBSTATION (DISTRIBUTION)		
Interpretation	SUBSTATION (ZONE)		
Interpretation	SUPPORTED RESIDENTIAL ACCOMMODATION		
Interpretation	TEMPORARY ACTIVITY		
Interpretation	TEMPORARY MILITARY TRAINING ACTIVITY		
Interpretation	TRADE RETAIL AND TRADE SUPPLIERS		
Interpretation	TRANSMISSION LINES		
Interpretation	UNOCCUPIED BUILDING		
Interpretation	UPGRADING		
Interpretation	URBAN ZONE		
Interpretation	VEHICLE CROSSING		
Interpretation	VISITOR ACCOMMODATION		
Interpretation	WATERBODY		
Interpretation	WETLAND		

Abbreviations Section

National Direction Instruments Section

Tangata Whenua Section

PART 2 - DISTRICT WIDE MATTERS Section

Strategic Direction Section

Strategic Direction	STRATEGIC DIRECTION		
Strategic Direction	Strategic Directions Overview	Support	The submitter supports the overview, and in particular the requirement for a Retain as notified.
Strategic Direction	AG		
Strategic Direction	Agriculture		
Strategic Direction	Agriculture Strategic Objectives		
Strategic Direction	AG - O1		
Strategic Direction	AG - O2		
Strategic Direction	CR		
Strategic Direction	Connections and Resilience		
Strategic Direction	Connections and Resilience Strategic Objectives		
Strategic Direction	CR - O1		
Strategic Direction	CR - O2		
Strategic Direction	CR - O3		
Strategic Direction	CR - O4		
Strategic Direction	MIN		
Strategic Direction	Mineral Extraction		
Strategic Direction	MIN - O1	Support	This objective recognises and provides for mining, and seeks to avoid duplica Retain as notified.
Strategic Direction	MIN - O2	Support	This objective recognises that mineral extraction, prospecting and exploratio Retain as notified.
Strategic Direction	MIN - O3	Support	This objective recognises that minerals only occur in certain locations, and th Retain as notified. Amend the objective as follows: "To ensure that new subdivision, use and development does not compromise existing mineral extraction activities, including through reverse
Strategic Direction	MIN - O4	Amend	This objective seeks to protect mineral extraction activities from reverse sen: sensitivity to effects such as dust, noise and traffic generation."
Strategic Direction	MIN - O5		
Strategic Direction	MIN - O6	Support	This objective recognises that there may be effects associated with mining, a Retain as notified.
Strategic Direction	NENV		
Strategic Direction	Natural Environment		
Strategic Direction	Natural Environment Strategic Objectives		
Strategic Direction	NENV - O1		
Strategic Direction	NENV - O2		
Strategic Direction	NENV - O3	Support in part	This objective recognises the fact that the West Coast has a large proportion RMA. Amend NENV - O4 as follows: "To recognise: a.The substantial contribution to the protection of natural environment values that is made by the existence of public conservation land in protecting significant areas, habitats and features; b.The <u>functional and operational need</u> for infrastructure <u>and mineral extraction activities</u> to sometimes be located in significant areas; and c.The need to support the ethic of stewardship and to consider the positive effects of the conservation estate in achieving the requirements of the Amend NENV - O3 as follows: "To recognise: a.The substantial contribution to the protection of natural environment values that is made by the existence of public conservation land in protecting significant areas, habitats and features; b.The <u>functional and operational need</u> for infrastructure <u>and mineral extraction activities</u> to sometimes be located in significant areas; and c.The need to support the ethic of stewardship and to consider the positive effects of the conservation estate in achieving the requirements of the Amend NENV - O4 as follows: "To clearly identify: a.Unique and important natural environment areas and features on the West Coast/Te Tai o Poutini which <u>require a greater degree of protection must be protected</u> , and b.Areas where subdivision, use and development to enable community economic, cultural and social wellbeing can be sustainably managed."
Strategic Direction	NENV - O4	Oppose in part	This objective suggests that some areas of the West Coast <u>must</u> be protectec economic, cultural and social wellbeing can be sustainably managed."
Strategic Direction	POU		
Strategic Direction	Poutini Ngāi Tahu		
Strategic Direction	Poutini Ngāi Tahu Strategic Objectives		
Strategic Direction	POU - O1		
Strategic Direction	POU - O2		
Strategic Direction	POU - O3		
Strategic Direction	POU - O4		
Strategic Direction	Poutini Ngāi Tahu Strategic Policies		
Strategic Direction	POU - P1		
Strategic Direction	POU - P2		
Strategic Direction	POU - P3		
Strategic Direction	POU - P4		
Strategic Direction	POU - P5		
Strategic Direction	POU - P6		
Strategic Direction	POU - P7		
Strategic Direction	POU - P8		
Strategic Direction	POU - P9		
Strategic Direction	POU - P10	Support in part	This objective is directive, and there are examples of minerals extraction with their management. Amend POU - P10 as follows: Protect <u>Manage adverse effects on</u> Poutini Ngāi Tahu taonga and cultural sites, including sites and areas of significance to Māori identified in Schedule Three while ensuring Poutini Ngāi Tahu's key role in decision making around
Strategic Direction	TRM		
Strategic Direction	Tourism		
Strategic Direction	Tourism Strategic Objective		
Strategic Direction	TRM - O1		
Strategic Direction	UFD		
Strategic Direction	Urban form and development		
Strategic Direction	Urban Form and Development Strategic Objective		
Strategic Direction	UFD - O1		

Energy Infrastructure and Transport Section

Energy Section

Infrastructure Section

Transport Section

HAZ - Hazards and Risks Section

Contaminated Land Section

Hazardous Substances Section

HCV - Historical and Cultural Values Section

Historic Heritage Section

Notable Trees Section

Sites and Areas of Significance to Māori Section

Sites and Areas of Significance to Māori	SASM
Sites and Areas of Significance to Māori	Sites and Areas of Significance to Māori
Sites and Areas of Significance to Māori	Overview
Sites and Areas of Significance to Māori	Sites and Areas of Significance to Māori Objectives
Sites and Areas of Significance to Māori	SASM - O1
Sites and Areas of Significance to Māori	SASM - O2
Sites and Areas of Significance to Māori	SASM - O3
Sites and Areas of Significance to Māori	Sites and Areas of Significance to Māori Policies
Sites and Areas of Significance to Māori	Cultural Landscapes
Sites and Areas of Significance to Māori	SASM - P1
Sites and Areas of Significance to Māori	Identification and access to significant sites and areas
Sites and Areas of Significance to Māori	SASM - P2
Sites and Areas of Significance to Māori	SASM - P3
Sites and Areas of Significance to Māori	SASM - P4
Sites and Areas of Significance to Māori	Poutini Ngāi Tahu Roles
Sites and Areas of Significance to Māori	SASM - P5
Sites and Areas of Significance to Māori	SASM - P6
Sites and Areas of Significance to Māori	Management of Activities on Identified Significant Sites and Areas
Sites and Areas of Significance to Māori	SASM - P7
Sites and Areas of Significance to Māori	SASM - P8
Sites and Areas of Significance to Māori	SASM - P9
Sites and Areas of Significance to Māori	Inappropriate Activities
Sites and Areas of Significance to Māori	SASM - P10
Sites and Areas of Significance to Māori	SASM - P11
Sites and Areas of Significance to Māori	SASM - P12
Sites and Areas of Significance to Māori	Appropriate Activities
Sites and Areas of Significance to Māori	SASM - P13
Sites and Areas of Significance to Māori	SASM - P14
Sites and Areas of Significance to Māori	SASM - P15
Sites and Areas of Significance to Māori	Sites and Areas of Significance to Māori Rules
Sites and Areas of Significance to Māori	Advice Notes:
Sites and Areas of Significance to Māori	Permitted Activities
Sites and Areas of Significance to Māori	SASM - R1
Sites and Areas of Significance to Māori	SASM - R2
Sites and Areas of Significance to Māori	SASM - R3
Sites and Areas of Significance to Māori	SASM - R4
Sites and Areas of Significance to Māori	SASM - R5
Sites and Areas of Significance to Māori	SASM - R6
Sites and Areas of Significance to Māori	SASM - R7
Sites and Areas of Significance to Māori	SASM - R8
Sites and Areas of Significance to Māori	SASM - R9
Sites and Areas of Significance to Māori	Controlled Activities
Sites and Areas of Significance to Māori	SASM - R10
Sites and Areas of Significance to Māori	Discretionary Activities
Sites and Areas of Significance to Māori	SASM - R11
Sites and Areas of Significance to Māori	SASM - R12
Sites and Areas of Significance to Māori	SASM - R13
Sites and Areas of Significance to Māori	SASM - R14
Sites and Areas of Significance to Māori	Non-complying Activities
Sites and Areas of Significance to Māori	SASM - R15
Sites and Areas of Significance to Māori	SASM - R16
Sites and Areas of Significance to Māori	SASM - R17
Sites and Areas of Significance to Māori	SASM - R18
Sites and Areas of Significance to Māori	Prohibited Activities
Sites and Areas of Significance to Māori	SASM - R19

Natural Environment Values Section

Ecosystems and Indigenous Biodiversity Section

Ecosystems and Indigenous Biodiversity	ECO
Ecosystems and Indigenous Biodiversity	Ecosystems and Indigenous Biodiversity
Ecosystems and Indigenous Biodiversity	Overview
Ecosystems and Indigenous Biodiversity	Plantation Forestry
Ecosystems and Indigenous Biodiversity	Strategic Objectives
Ecosystems and Indigenous Biodiversity	Wetlands on the West Coast

Include an additional objective into Ecosystems and Indigenous Biodiversity as follows:

"When considering resource consent applications which have effects on ecosystems and indigenous biodiversity, have regard to the protection afforded to other similar ecosystems and indigenous biodiversity within

Ecosystems and Indigenous Biodiversity	Ecosystems and Indigenous Biodiversity Objectives	Amend	An additional objective is sought to give effect to NENV - O3, which recognises public conservation land."
Ecosystems and Indigenous Biodiversity	ECO- O1		
Ecosystems and Indigenous Biodiversity	ECO- O2	Support	This objective supports mineral extraction where values can be maintained. Retain as notified.
Ecosystems and Indigenous Biodiversity	ECO- O3		
Ecosystems and Indigenous Biodiversity	ECO- O4	Support	This objective supports the maintenance of the range and diversity of ecosys Retain as notified.
Ecosystems and Indigenous Biodiversity	Ecosystems and Indigenous Biodiversity Policies		
Ecosystems and Indigenous Biodiversity	ECO - P1		

Amend ECO - P2 as follows:

"Allow activities within areas of significant indigenous vegetation or significant habitats of indigenous fauna where:

- a.This is for a lawfully established activity; or
- b.It is for a Poutini Ngāi Tahu cultural purpose; or
- c.This is undertaken on Poutini Ngāi Tahu or Te Rūnanga o Ngāi Tahu land in accordance with an Iwi/Papatipu Rūnanga Management Plan; or
- d.The activity has a functional or oprational need to be located in the area;
- e.The activity has no more than minor adverse effects on the significant

Ecosystems and Indigenous Biodiversity	ECO - P2	Support in part	This policy recognises that some activities have a functional need to be locat indigenous vegetation or fauna habitat."
Ecosystems and Indigenous Biodiversity	ECO - P3	Support in part	Subsections b and c are supported. Minerals extraction activities often provi Retain subsections b and c as notified.
Ecosystems and Indigenous Biodiversity	ECO - P4		
Ecosystems and Indigenous Biodiversity	ECO - P5		

			Amend ECO P6 as follows:
			"When assessing consents for subdivision, use and development, avoid- activities shall be designed and undertaken in a way that does not, which will:
			a.Prevent an indigenous species or community being able to persist in their habitats within their natural range in the Ecological District; b.Result in a degradation of the threat status, further measurable loss of indigenous cover (with the exception of Manuka and Kanuka) or-disruption-to-ecological-processes,-functions-or-connections in land environments in category one or two of the Threatened Environment Classification at the Ecological District level; and c.Result in a reasonably measurable reduction in the local population of threatened taxa in the Department of Conservation Threat Categories 1 – 3a
Ecosystems and Indigenous Biodiversity	ECO - P6	Oppose in part	This policy contains language which is inconsistent with the same policy in th -nationally critical, nationally endangered and nationally vulnerable."
			When assessing resource consents in areas of significant indigenous vegetation and significant habitats of indigenous fauna, consider the following matters:
			a.The necessity for the activity to provide for critical infrastructure or renewable electricity generation; b.Whether formal protection and active management of all or part of any area of significant indigenous vegetation or habitat will occur as part of the subdivision, use or development; c.The extent to which the proposed activity recognises and provides for Poutini Ngāi Tahu cultural and spiritual values, rights and interests; d.The cumulative effects of activities within or adjacent to any area of significant indigenous vegetation or habitat; e.The effects the activity may have on the introduction or spread of exotic weed species and pest animals both terrestrial and aquatic; f.The impacts on mahinga kai; g.The impact of the activity on the values of any area of significant indigenous vegetation or habitat, or threatened species and how any potential impact could be avoided, remedied or mitigated; h. <u>_____ The functional or operational need for the activity to occur within areas of significant indigenous vegetation or significant habitats of indigenous fauna,</u> and hi.The appropriateness of any biodiversity offsetting or compensation in accordance with Policy 9 to offset any residual adverse effects that remain after avoiding, remedying and mitigating measures have been applied.
Ecosystems and Indigenous Biodiversity	ECO - P7	Support in part	The policy recognises the need to provide for offsetting or compensation to c
Ecosystems and Indigenous Biodiversity	ECO - P8		
Ecosystems and Indigenous Biodiversity	ECO - P9	Support	The policy recognises the need to provide for offsetting or compensation to c Retain as notified.
Ecosystems and Indigenous Biodiversity	ECO - P10		
Ecosystems and Indigenous Biodiversity	Ecosystems and Indigenous Biodiversity Rules		
Ecosystems and Indigenous Biodiversity	Note:		
Ecosystems and Indigenous Biodiversity	Permitted Activities		
Ecosystems and Indigenous Biodiversity	ECO - R1	Support	This permitted activity rule provides for a number of vegetation clearance ac Retain as notified.
Ecosystems and Indigenous Biodiversity	ECO - R2		
Ecosystems and Indigenous Biodiversity	Controlled Activities		
Ecosystems and Indigenous Biodiversity	ECO - R3		
Ecosystems and Indigenous Biodiversity	ECO - R4/SUB - R7		
Ecosystems and Indigenous Biodiversity	Restricted Discretionary Activities		
			Include functionl and operational need in ECO - P7 as per relief sought above, and/or amend ECO - R5 as follows:
			Discretion is restricted to: a.Whether there are other regulations impacting the site that have meant the land is unable to be used for economic rural uses; b.Constraints imposed by functional or operational need of network utilities and critical infrastructure; c.Effects on habitats of any threatened or protected species; d.Effects on the threat status of land environments in category one or two of the Threatened Environments Classification; e.Effects on ecological functioning and the life supporting capacity of air, water, soil and ecosystems; f.Effects on the intrinsic values of ecosystems; g.Effects on recreational values of public land; and h.The matters outlined in Policies ECO - P6 and ECO - P7 ; <u>and</u> i. <u>_____ The functional or operational need for the activity to locate within the area where indigenous vegetation clearance is proposed to occur.</u>
Ecosystems and Indigenous Biodiversity	ECO - R5	Support in part	The restricted discretionary activity status for indigenous vegetation clearanc
Ecosystems and Indigenous Biodiversity	ECO - R6/SUB - R9		
Ecosystems and Indigenous Biodiversity	Discretionary Activities		
Ecosystems and Indigenous Biodiversity	ECO - R7	Support	The discretionary activity status for vegetation clearance within the specific Retain as notified.
Ecosystems and Indigenous Biodiversity	ECO - R8/SUB - R15		
Ecosystems and Indigenous Biodiversity	Non-complying Activities		
Ecosystems and Indigenous Biodiversity	ECO - R9/SUB - R27		
Ecosystems and Indigenous Biodiversity	ECO - R10		
Ecosystems and Indigenous Biodiversity	ECO - R11		
Natural Features and Landscapes Section			
Natural Features and Landscapes	NFL		
Natural Features and Landscapes	Natural Features and Landscapes		
Natural Features and Landscapes	Overview		
Natural Features and Landscapes	Plantation Forestry		
Natural Features and Landscapes	Other relevant Te Tai o Poutini Plan provisions		
Natural Features and Landscapes	Natural Features and Landscapes Objective		
Natural Features and Landscapes	NFL - O1		
Natural Features and Landscapes	Natural Features and Landscapes Policies		
Natural Features and Landscapes	NFL - P1		
Natural Features and Landscapes	NFL - P2		
Natural Features and Landscapes	NFL - P3		
Natural Features and Landscapes	NFL - P4		
Natural Features and Landscapes	NFL - P5		
Natural Features and Landscapes	NFL - P6		
Natural Features and Landscapes	NFL - P7		
Natural Features and Landscapes	Permitted Activities		
Natural Features and Landscapes	NFL - R1		
Natural Features and Landscapes	NFL - R2		
Natural Features and Landscapes	NFL - R3		
Natural Features and Landscapes	NFL - R4		
Natural Features and Landscapes	NFL - R5		
Natural Features and Landscapes	NFL - R6		
Natural Features and Landscapes	NFL - R7		

Natural Features and Landscapes	NFL - R8
Natural Features and Landscapes	Controlled Activities
Natural Features and Landscapes	NFL - R9
Natural Features and Landscapes	NFL - R10
Natural Features and Landscapes	Restricted Discretionary Activities
Natural Features and Landscapes	NFL - R11
Natural Features and Landscapes	NFL - R12
Natural Features and Landscapes	Discretionary Activities
Natural Features and Landscapes	NFL - R13
Natural Features and Landscapes	NFL - R14
Natural Features and Landscapes	NFL - R15

Public Access Section

Natural Character and Margins of Waterbodies Section

Natural Character and Margins of Waterbodies: NC	
Natural Character and Margins of Waterbody: Natural Character and Margins of Waterbodies	
Natural Character and Margins of Waterbody: Overview	
Natural Character and Margins of Waterbody: Natural Character and the Margins of Waterbodies Objectives	
Natural Character and Margins of Waterbody: NC - O1	
Natural Character and Margins of Waterbody: NC - O2	

Support This objective provides for activities to occur, provided adverse effects are a) Retain as notified.

Amend NC - O3 as follows:

To provide for activities which have a functional or operational need to locate in the margins of lakes, rivers and wetlands in such a way that the impacts on natural character are minimised.

Natural Character and Margins of Waterbody: NC - O3	
Natural Character and Margins of Waterbody: Natural Character and the Margins of Waterbodies Policies	
Natural Character and Margins of Waterbody: NC - P1	

Support in part This objective recognises the functional need of some activities to occur with

Amend NC - P2 as follows:

Provide for indigenous vegetation removal, minerals extraction, exploration and prospecting activities and earthworks within riparian margins of lakes, rivers and wetlands where significant adverse effects on natural character are minimised as far as practicable and:

Natural Character and Margins of Waterbody: NC - P2	
---	--

Support in part This objective recognises the functional and/or operational need of some act

Amend NC - P3 as follows:

Provide for buildings and structures within riparian margins of lakes, rivers and wetlands where these:

Natural Character and Margins of Waterbody: NC - P3	
Natural Character and Margins of Waterbody: NC - P4	
Natural Character and Margins of Waterbody: NC - P5	
Natural Character and Margins of Waterbody: Natural Character and the Margins of Waterbodies Rules	
Natural Character and Margins of Waterbody: Note:	
Natural Character and Margins of Waterbody: Permitted Activities	
Natural Character and Margins of Waterbody: NC - R1	
Natural Character and Margins of Waterbody: NC - R2	

Support in part This policy recognises the functional need of some activities to occur within t a. Have a functional or operational need for their location; and

Amend NC - R3 as follows:

Indigenous Vegetation Clearance and Earthworks excluding minerals extraction, exploration and prospecting activities, not meeting the Permitted Activity Rules Activity Status Discretionary

Alternatively, amend the definition of earthworks to specifically exclude minerals extraction, exploration and prospecting activities so that these

Natural Character and Margins of Waterbody: NC - R3	
Natural Character and Margins of Waterbody: Discretionary Activities	
Natural Character and Margins of Waterbody: NC - R3	
Natural Character and Margins of Waterbody: NC - R4	
Natural Character and Margins of Waterbody: NC - R5	

Oppose in part Because the definition of Earthworks does not specifically exclude minerals e rules do not apply to these activities.

Financial Contributions Section

Subdivision Section

General District Wide Matters Section

Activities on the surface of water Section

Coastal Environment Section

Coastal Environment	CE
Coastal Environment	Coastal Environment
Coastal Environment	Overview
Coastal Environment	Coastal Environment Objectives
Coastal Environment	CE - O1
Coastal Environment	CE - O2
Coastal Environment	CE - O3
Coastal Environment	Coastal Environment Policies
Coastal Environment	CE - P1
Coastal Environment	CE - P2
Coastal Environment	CE - P3
Coastal Environment	CE - P4
Coastal Environment	CE - P5
Coastal Environment	CE - P6
Coastal Environment	CE - P7
Coastal Environment	CE - P8
Coastal Environment	Coastal Environment Rules
Coastal Environment	Note:
Coastal Environment	Permitted Activities
Coastal Environment	CE - R1
Coastal Environment	CE - R2
Coastal Environment	CE - R3
Coastal Environment	CE - R4
Coastal Environment	Permitted Activities within the High Coastal Natural Character Overlay
Coastal Environment	CE - R5
Coastal Environment	CE - R6
Coastal Environment	CE - R7
Coastal Environment	Permitted Activities within the Outstanding Coastal Environment Area
Coastal Environment	CE - R8
Coastal Environment	CE - R9
Coastal Environment	CE - R10
Coastal Environment	CE - R11
Coastal Environment	Controlled Activities
Coastal Environment	CE - R12
Coastal Environment	Restricted Discretionary Activities
Coastal Environment	CE - R13
Coastal Environment	CE - R14
Coastal Environment	CE - R15
Coastal Environment	CE - R16

Coastal Environment	CE - R17		
Coastal Environment	CE - R18		
Coastal Environment	Discretionary Activities		
Coastal Environment	CE - R19		
Coastal Environment	CE - R20		
Coastal Environment	CE - R21		
Coastal Environment	Non-complying Activities		
Coastal Environment	CE - R22		
Earthworks Section			
Earthworks	EW		
Earthworks	Earthworks		
Earthworks	Overview		
Earthworks	Earthworks Objectives		
Earthworks	EW - O1	Support	This objective is supported, however it is noted that the submission seeks for Retain as notified.
Earthworks	Earthworks Policies		
			Amend EW - P1 as follows:
			Enable temporary and small scale earthworks for the subdivision, use and development of land, the provision of utilities, and hazard mitigation, while managing those with the potential to create significant adverse effects.
Earthworks	EW - P1	Support in part	This policy gives effect to EW - O1, however should enable all earthworks, in
Earthworks	EW - P2		
Earthworks	EW - P3		
Earthworks	EW - P4		
Earthworks	Earthworks Rules		
Earthworks	Note:		
Earthworks	Permitted Activities		
			Amend EW - R1 as follows:
			All Permitted activities must comply with the following relevant standards.
			Earthworks must not exceed a maximum depth or height above ground level of 1.5m measured vertically within 1.5m of a boundary except where these are undertaken by a network utility operator for the purpose of:
			Pole foundations;
			Backfilled trenches; or
			Installation of services by trenchless methods such as directional drilling;
			All fill must consist of cleanfill material <u>except for any vegetative matter which is being used as fill on the same site</u> ;
Earthworks	EW - R1	Support in part	Earthworks are permitted provided that all fill consists of cleanfill material.
			Amend EW - R2 as follows:
			EW - R2
			Earthworks <u>excluding minerals extraction, exploration and prospecting activities</u> - All Zones
Earthworks	EW - R2	Support in part	Because the definition of Earthworks does not specifically exclude minerals e
Earthworks	EW - R3		
			Amend EW - R4 as follows:
			Earthworks <u>excluding minerals extraction, exploration and prospecting activities</u> in the GRUZ - General Rural Zone, RLZ - Rural Lifestyle Zone, any INZ - Industrial Zone, FUZ - Future Urban Zone, AIRPZ - Airport Zone, any OSRZ - Open Space and Recreation Zone and the MPZ - Māori Purpose Zone
Earthworks	EW - R4	Support in part	Because the definition of Earthworks does not specifically exclude minerals e
Earthworks	EW - R5		
Earthworks	EW - R6	Oppose	This rule permits earthworks within the Minerals Extraction and Buller Coalfield Delete EW - R6
Earthworks	Restricted Discretionary Activities		
Earthworks	EW - R7		
			Amend EW - R8 as follows:
			EW - R8Earthworks <u>excluding minerals extraction, exploration and prospecting activities</u> in any Zone not meeting Permitted Activity standards
Earthworks	EW - R8	Support in part	Because the definition of Earthworks does not specifically exclude minerals e
Light Section			
Light	LIGHT		
Light	Light		
Light	Overview		
Light	Light Objectives		
Light	LIGHT - O1		
			Amend LIGHT - O2 as follows:
			Artificial outdoor lighting is located, designed and operated to maintain the character and amenity values within zones, so that it does not adversely affect the health and safety of people, the safe operation of the transport network, protects views of the night sky ; the habitats and ecosystems of nocturnal native fauna and the species themselves.
Light	LIGHT - O2	Oppose in part	This policy requires protection of views of the night sky, which is not always
Light	Light Policies		
			Amend LIGHT - P1 as follows:
			Provide for the use of artificial outdoor lighting that:
			a.Allows people and communities to enjoy and use sites and facilities during night time hours and contributes to the security and safety of private and public spaces;
			b.Maintains the character and amenity values of the zone and surrounding area;
			c.Supports the social, cultural, and economic wellbeing or health and safety of people and communities, including road safety;
			d.Minimises sky glow and light spill; and
			e. <u>Protects Minimises the adverse effects on</u> the health and well-being of people and ecosystems.
Light	LIGHT - P1	Oppose in part	The wording of this policy is inconsistent with the corresponding objective. §
			Amend LIGHT - P2 as follows:
			Control the intensity, location and direction of any artificial outdoor lighting to:
			a.Ensure that any artificial outdoor lighting avoids conflict with existing light sensitive areas and uses;
			b.Internalise light spill within the site where the outdoor lighting is located;
			c.Minimises adverse effects on views of the night sky and intrinsically dark landscapes including in areas of outstanding coastal natural character;
Light	LIGHT - P2	Oppose in part	The submission seeks amendments to LIGHT O2 which relates to the require
Light	LIGHT - P3		
Light	Light Rules		
Light	Note:		

Light Light	Permitted Activities LIGHT - R1	Oppose	This rule requires the discretion of the relevant territorial authority to assess Delete LIGHT - R1 Amend LIGHT - R2 as follows: Where: 1.Outdoor artificial lighting must not exceed the following vertical or horizontal light levels: a.7.00am – 10.00pm: 25 Lux; b.10.00pm – 7.00am: 10 Lux in the PORTZ - Port Zone, and MINZ - Mineral Extraction Zone; and c.10.00pm - 7am: 5 Lux in the TCZ - Town Centre, MUZ - Mixed Use, COMZ - Commercial, HOSZ - Hospital, STADZ - Stadium, AIRPZ - Airport and all INZ - Industrial Zones;
Light Light	LIGHT - R2 LIGHT - R3	Oppose	This rule has a particularly restrictive Lux limit for lighting after 10pm in indu: Amend LIGHT - R4 as follows: Where: 1. Outdoor artificial lighting must not exceed the following vertical or horizontal light levels: a. 7.00am – 10.00pm: 10 Lux; and b.10.00pm – 7.00am: 2 Lux;
Light Light Light Light Light	LIGHT - R4 Restricted Discretionary Activities LIGHT - R5 Discretionary Activities LIGHT - R6	Oppose in part	This rule introduces a very stringent lux limit for night time lighting in all zones b.10.00pm – 7.00am: 2 Lux;
Noise Section			
Signs Section			
Temporary Activities Section			
PART 3 - AREA-SPECIFIC MATTERS Section			
ZONES Section			
ZONES	ZONES		
Open Space and Recreation Zones Section			
Open Space and Recreation Zones Open Space and Recreation Zones Open Space and Recreation Zones	Open Space and Recreation Zones OSRZ Open Space and Recreation Zones	Oppose	The Proposed Plan includes Open Space and Recreation Zones. These have to be in the Planning Maps, replace the Open Space Zones with General Rural Zone on rural public conservation land, except where the submitter has sought a Mineral Extraction Zone. Retain the following wording: "The nature of the West Coast, with its extensive mineral deposits, combined with 84% of the land area being located in public conservation estate, means that provision is also made for mineral extraction within the Open Space Zone."
Open Space and Recreation Zones Open Space and Recreation Zones Open Space and Recreation Zones Open Space and Recreation Zones Open Space and Recreation Zones Open Space and Recreation Zones Open Space and Recreation Zones Open Space and Recreation Zones Open Space and Recreation Zones Open Space and Recreation Zones Open Space and Recreation Zones Open Space and Recreation Zones Open Space and Recreation Zones Open Space and Recreation Zones	Overview OSRZ - Open Space and Recreation Zones Objectives OSRZ - O1 OSRZ - O2 OSRZ - Open Space and Recreation Zones Policies OSRZ - P1 OSRZ - P2 OSRZ - P3 OSRZ - P4 OSRZ - P5 OSRZ - P6 OSRZ - P7 OSRZ - P8	Support in part	The overview of the Open Space Zone notes that minerals extraction can occur within the Open Space Zone.
Open Space and Recreation Zones Open Space and Recreation Zones Open Space and Recreation Zones Open Space and Recreation Zones Open Space and Recreation Zones	OSRZ - P9 OSRZ - P10 Open Space Zone OSRZ - P11 OSRZ - P12 OSRZ - P13	Support in part	This policy seeks to provide for a range of activities, and provides for mineral community needs. Amend OSRZ - P9 as follows: Provide for the range of purposes where compatible with the open space values including: a.The ongoing operation and appropriate management of cemeteries; b.Camping opportunities at rivers, lakes and coastal areas where this is compatible with the values of the open space; c.Gravel and shingle extraction for roading networks and other local purposes; d.Quarries for rock; e.Pastoral farming including grazing as a management tool; f.Mineral extraction <u>exploration and prospecting</u> of resources where <u>there is a functional or operational need to locate there</u> these are limited in their location; and g.Water supply and drainage networks where this supports local community needs. Amend OSRZ - P14 as follows: Provide for mineral extraction activities within the OSZ - Open Space Zone where: a.Impacts on open space and recreation values of the site are minimised; b.This is provided for within any Open Space Management Plan for the area; c.Adverse effects on open space and recreation values and the environment are avoid, mitigated, remedied, offset or compensated; d.Sites are rehabilitated at the end of the mineral extraction activity to enable the land to be used for an appropriate activity.
Open Space and Recreation Zones Open Space and Recreation Zones Open Space and Recreation Zones Open Space and Recreation Zones Open Space and Recreation Zones Open Space and Recreation Zones Open Space and Recreation Zones Open Space and Recreation Zones Open Space and Recreation Zones Open Space and Recreation Zones	OSRZ - P14 Sport and Active Recreation Zone OSRZ - P15 OSRZ - P16 OSRZ - P17 Natural Open Space Zone OSRZ - P18 OSRZ - P19 OSRZ - P20	Support in part	This policy specifically provides for minerals extraction activities, however co
Natural Open Space Zone Section			
Natural Open Space Zone Natural Open Space Zone Natural Open Space Zone Natural Open Space Zone Natural Open Space Zone Natural Open Space Zone	NOSZ Natural Open Space Zone Overview NOSZ - Natural Open Space Zone Rules Permitted Activities NOSZ - R1		

Natural Open Space Zone NOSZ - R2
 Natural Open Space Zone NOSZ - R3
 Natural Open Space Zone NOSZ - R4
 Natural Open Space Zone NOSZ - R5
 Natural Open Space Zone NOSZ - R6
 Natural Open Space Zone Restricted Discretionary Activities
 Natural Open Space Zone NOSZ - R7
 Natural Open Space Zone NOSZ - R8
 Natural Open Space Zone NOSZ - R9
 Natural Open Space Zone Discretionary Activities
 Natural Open Space Zone NOSZ - R10
 Natural Open Space Zone NOSZ - R11
 Natural Open Space Zone NOSZ - R12
 Natural Open Space Zone Non-complying Activities
 Natural Open Space Zone NOSZ - R13
 Natural Open Space Zone NOSZ - R14
 Natural Open Space Zone NOSZ - R15

Amend NOSZ as follows:

NOSZ - R16Mineral Extraction Activities

Natural Open Space Zone NOSZ - R16
 Natural Open Space Zone NOSZ - R17

Support in part This rule makes mineral extraction activities non-complying. It is not consider Activity Status Discretionary ~~Non-complying~~

Open Space Zone Section

Open Space Zone OSZ
 Open Space Zone Open Space Zone
 Open Space Zone Overview
 Open Space Zone OSZ - Open Space Zone Rules
 Open Space Zone Note:
 Open Space Zone Permitted Activities
 Open Space Zone OSZ - R1
 Open Space Zone OSZ - R2
 Open Space Zone OSZ - R3
 Open Space Zone OSZ - R4
 Open Space Zone OSZ - R5
 Open Space Zone OSZ - R6
 Open Space Zone OSZ - R7
 Open Space Zone OSZ - R8
 Open Space Zone OSZ - R9
 Open Space Zone OSZ - R10
 Open Space Zone OSZ - R11
 Open Space Zone OSZ - R12
 Open Space Zone Controlled Activities
 Open Space Zone OSZ - R13
 Open Space Zone Restricted Discretionary Activities
 Open Space Zone OSZ - R14
 Open Space Zone OSZ - R15
 Open Space Zone OSZ - R16
 Open Space Zone OSZ - R17
 Open Space Zone OSZ - R18
 Open Space Zone OSZ - R19
 Open Space Zone OSZ - R20
 Open Space Zone Discretionary Activities
 Open Space Zone OSZ - R21
 Open Space Zone OSZ - R22
 Open Space Zone OSZ - R23
 Open Space Zone Non-complying Activities
 Open Space Zone OSZ - R24
 Open Space Zone OSZ - R25
 Open Space Zone OSZ - R26

Support This rule classifies mineral extraction, exploration and prospecting as a restric Retain as notified.

Support This rule classifies mineral extraction, exploration and prospecting as a discre Retain as notified.

Sport and Active Recreation Zone Section

Commercial and Mixed Use Zones Section

Commercial Zone Section

Mixed Use Zone Section

Neighbourhood Centre Zone Section

Town Centre Zone Section

Industrial Zones Section

General Industrial Zone Section

General Industrial Zone GIZ
 General Industrial Zone General Industrial Zone
 General Industrial Zone Overview
 General Industrial Zone Other relevant Te Tai o Poutini Plan provisions
 General Industrial Zone General Industrial Zone Rules
 General Industrial Zone Note:
 General Industrial Zone Permitted Activities

Activity Status Permitted

Where:

- 1.The maximum building height above ground level is 12m;
- 2.Maximum site coverage is 65%;
- 3.Buildings are setback a minimum:
 - i.10m from State Highways; and
 - ii.5m from road boundaries, any Residential Zone, Open Space Zone or Settlement Zone boundary and the Rail Corridor;
- 4.All external storage and car parking areas shall be screened by a 1.8m fence or landscaping so that:
 - i.It is not visible from any adjacent Residential Zone or Settlement Zone boundary or adjacent public place; and
 - ii.The fence or landscaping is set back from the road boundary so that it does not restrict visibility;
- 5.No blasting or vibration shall occur outside the hours of 0800 to 1800 hours weekdays and 0900 to 1600 hours on Saturdays with no blasting or vibration to be undertaken on Sundays or public holidays;
- ~~6. There shall be no offensive or objectionable dust nuisance at or beyond the LIZ – Light Industrial Zone boundary as a result of the activity;~~
- 7.The area adjoining the road frontage of all sites, and the side boundary of a site that adjoins a RESZ - Residential, SETZ - Settlement, OSZ - Open Space, SARZ - Sport and Recreation Zone or MUZ - Mixed Use Zone shall contain landscaping as follows:
 - a.A minimum width of 2 metres that will, within two years of being planted, reach a minimum height of 1m, provided that lower heights are

This rule contains a number of problematic provisions for industrial activities.
 This rule requires as a condition that there is no dust nuisance at the Light Industrial Zone Boundary when it should say General Industrail Zone. While dust nuisance is often a matter of discretion when considering land use consents required by a District Plan, it would be unusual to have a rule which effectively seeks to limit air discharges. The West Coast Regional Air Plan controls air discharges and the rule is inappropriate. Similarly the West Coast Regional Land and Water Plan is the appropriate plan to control stormwater discharge, and there is no requirement for a stormwater disposal rule in the Proposed Plan.

General Industrial Zone GIZ - R1

Oppose

General Industrial Zone GIZ - R2
 General Industrial Zone GIZ - R3
 General Industrial Zone GIZ - R4
 General Industrial Zone GIZ - R5
 General Industrial Zone GIZ - R6
 General Industrial Zone GIZ - R7
 General Industrial Zone GIZ - R8
 General Industrial Zone Restricted Discretionary Activities
 General Industrial Zone GIZ - R9
 General Industrial Zone GIZ - R10
 General Industrial Zone GIZ - R11
 General Industrial Zone Discretionary Activities
 General Industrial Zone GIZ - R12

Light Industrial Zone Rules Section

Residential Zones Section

General Residential Zone Section

Large Lot Residential Zone Section

Medium Density Residential Zone Section

Rural Zones Section

Rural Zones Rural Zones
 Rural Zones RURZ
 Rural Zones Rural Zones - Objectives and Policies
 Rural Zones Overview
 Rural Zones Note with Regard to Plantation Forestry
 Rural Zones Rural Zones Objectives

Rural Zones RURZ - O1
 Rural Zones RURZ - O2
 Rural Zones RURZ - O3
 Rural Zones RURZ - O4

Rural Zones RURZ - O5
 Rural Zones RURZ - O6
 Rural Zones Rural Zones Policies
 Rural Zones Rural Amenity and Character
 Rural Zones RURZ - P1
 Rural Zones RURZ - P2

Rural Zones RURZ - P3
 Rural Zones RURZ - P4
 Rural Zones Production Values
 Rural Zones RURZ - P5
 Rural Zones Non-Rural Activities
 Rural Zones RURZ - P6
 Rural Zones RURZ - P7
 Rural Zones RURZ - P8
 Rural Zones Visitor Economy
 Rural Zones RURZ - P9
 Rural Zones RURZ - P10
 Rural Zones Infrastructure in Rural Areas
 Rural Zones RURZ - P11
 Rural Zones RURZ - P12
 Rural Zones RURZ - P13
 Rural Zones RURZ - P14
 Rural Zones Reverse sensitivity
 Rural Zones RURZ - P15
 Rural Zones RURZ - P16
 Rural Zones Papakāinga housing
 Rural Zones RURZ - P17
 Rural Zones Mineral Extraction

Rural Zones RURZ - P18

Rural Zones RURZ - P19
 Rural Zones RURZ - P20
 Rural Zones RURZ - P21
 Rural Zones RURZ - P22
 Rural Zones RURZ - P23
 Rural Zones RURZ - P24

Amend RURZ - O1 as follows:

 "To provide for a range of activities, uses and developments, including primary production, that maintain the amenity and rural character values of the rural environment, while retaining highly productive land for and rural activities, and supporting a productive rural working environment."

Support in part This objective is enabling of activities in the rural zones, however wording co

Amend RURZ - O5 as follows:

 To support provide for the use and extraction of mineral resources located within the rural environment, recognising that mineral resources are widespread, and that provided adverse effects are minimised and rehabilitation of land occurs following mineral extraction, mineral extraction can be appropriate in a range of locations.

Support in part This objective recognises the extraction of mineral resources occurs in the ru

Support This policy supports a wide range of activities, which includes minerals extrac Retain as notified.

Amend RURZ - P3 as follows:

 Expansion of existing settlements beyond current boundaries should support the existing character and amenity of the settlement and avoid areas of high hazard risk, high natural or Poutini Ngāi Tahu cultural values, or significant agricultural primary production values.

Support in part The policy provides for management of reverse sensitivity effects on certain

Support The policy provides for management of reverse sensitivity effects and is supp Retain as notified.

Amend RURZ - P18 as follows:

 Recognise that mineral resources are fixed in location and enable mineral extraction activities provided adverse effects are avoided, remedied, or mitigated, offset or compensated for.

Amend RURZ - P19 as follows:

 Manage conflicts between mineral extraction activities and other land uses by ensuring that:

 a. Standards to manage adverse effects minimise impacts on the amenity, rural character and natural values of rural areas are met; and
 b. Activities that are incompatible with the effects of mineral extraction activities are not established close to existing mineral extraction activities.

Support in part This policy is supported, however amendments are sought for consistency

Support This policy requires the provision of adequate information to assess effects a Retain as notified.

Support This policy requires rehabilitation of land following mineral extraction in an a Retain as notified.

Support This policy supports co-ordination which will avoid duplication of effort in res Retain as notified.

Support This policy supports the creation of Minerals Extraction Zones where the res Retain as notified.

Rural Zones	RURZ - P25		Amend RURZ - P25 as follows:
Rural Zones	Airfields and Helipads		RURZ - P25
Rural Zones	RURZ - P26		Maintain the quality of the environment and amenity of areas surrounding the mineral extraction activities as far as practicable by:
Rural Zones	RURZ - P27		
Rural Zones	RURZ - P28		
Rural Zones	GRUZ - PREC1 - Community Living Precinct Policy		a.Utilising management, mitigation and rehabilitation plans as a key tool;
Rural Zones	GRUZ - PREC1 - P1		b.Managing dust, noise, vibration, access and lighting to maintain amenity values;
Rural Zones	SETZ - PREC2 - Settlement Centre Precinct Policy		c.Managing traffic generation impacts on the operation and maintenance of the transport network;
Rural Zones	SETZ - PREC2 - P2		d. Avoiding or mitigating impacts Managing adverse effects on significant indigenous vegetation and significant habitats of indigenous fauna;
Rural Zones	SETZ - PREC3 - Coastal Settlement Precinct Policy	Support in part	This policy seeks maintenance of amenity and quality of the environment, hc
Rural Zones	SETZ - PREC3- P3		
Rural Zones	SETZ - PREC4 - Rural Residential Precinct Policy		
Rural Zones	SETZ - PREC4 - P4		
Rural Zones	GRUZ - PREC 5 - Highly Productive Land Precinct Policy		
Rural Zones	GRUZ - PREC5 - P5		
General Rural Zone Section			
General Rural Zone	GRUZ		
General Rural Zone	General Rural Zone - Rules		
General Rural Zone	Overview		
General Rural Zone	General Rural Zone Rules		
General Rural Zone	Note:		
General Rural Zone	Permitted Activities		
General Rural Zone	GRUZ - R1		
General Rural Zone	GRUZ - R2		
General Rural Zone	GRUZ - R3		
General Rural Zone	GRUZ - R4		
General Rural Zone	GRUZ - R5		
General Rural Zone	GRUZ - R6		
General Rural Zone	GRUZ - R7		
General Rural Zone	GRUZ - R8		
General Rural Zone	GRUZ - R9		
General Rural Zone	GRUZ - R10		
General Rural Zone	GRUZ - R11	Support	This rule provides for minerals exploration and prospecting and is supported. Retain as notified.
General Rural Zone	GRUZ - R12	Support	This rule provides for minerals extraction as a permitted activity, albeit in lim Retain as notified.
General Rural Zone	GRUZ - R13		
General Rural Zone	GRUZ - R14		
General Rural Zone	Controlled Activities		
General Rural Zone	GRUZ - R15		
General Rural Zone	GRUZ - R16		
General Rural Zone	GRUZ - R17		
General Rural Zone	GRUZ - R18		
General Rural Zone	GRUZ - R19		
General Rural Zone	Restricted Discretionary Activities		
General Rural Zone	GRUZ - R20		
General Rural Zone	GRUZ - R21		
General Rural Zone	GRUZ - R22		
General Rural Zone	GRUZ - R23		
General Rural Zone	GRUZ - R24	Oppose	Non-rural activities is not defined. Without any definition it is unclear what i Delete GRUZ - R24 Amend GRUZ - R25 as follows: GRUZ - R25Mineral Extraction , <u>Prospecting and Exploration</u> Activities not meeting Permitted or Controlled Activity Standards ... Discretion is restricted to: a.Management of access, parking and traffic generation; b.Noise, glare, light, dust, blasting and vibration management; c.Hours of operation; d.Hazardous substances and waste management; e.Historic and Poutini Ngāi Tahu cultural heritage requirements; f.Extent and management of earthworks and indigenous vegetation clearance; g.Effects on any threatened fauna or flora or their habitats; h.Design and location of buildings, structures and infrastructure; i.Landscape measures; j.Maintaining public access; k.Effects on riparian margins and water quality ; l.Monitoring, reporting and community liaison requirements; m.Financial contributions and any requirement for bonds; and n.Site rehabilitation and mine closure requirements.
General Rural Zone	GRUZ - R25	Support in part	Matters of discretion include water quality. This is not a district planning ma n.
General Rural Zone	GRUZ - R26		
General Rural Zone	Discretionary Activities		
General Rural Zone	GRUZ - R27		
General Rural Zone	GRUZ - R28		
General Rural Zone	GRUZ - R29		
General Rural Zone	GRUZ - R30		
General Rural Zone	GRUZ - R31		
General Rural Zone	GRUZ - R32	Oppose	GRUZ - R25 makes minerals extraction a restricted discretionary activity. If a Delete GRUZ-32.
General Rural Zone	GRUZ - R33		
General Rural Zone	Non-complying Activities		
General Rural Zone	GRUZ - R34		
General Rural Zone	GRUZ - R35		
Rural Lifestyle Zone Section			
Settlement Zone Section			
SPZ - Special Purpose Zones Section			
Airport Zone Section			
Buller Coalfield Zone Section			
Future Urban Zone Section			
Hospital Zone Section			

Mineral Extraction Zone Section

Mineral Extraction Zone	MINZ		
Mineral Extraction Zone	Mineral Extraction Zone		
Mineral Extraction Zone	Overview	Support	Supports the inclusion of the Minerals Extractions Zones which recognises th
Mineral Extraction Zone	Mineral Extraction Zone Objectives		
Mineral Extraction Zone	MINZ - O1	Support	This objective enables mineral extraction activities in the MINZ and is support

Retain the Minerals Extraction Zones and include additional areas at Rimu Channel as shown in Attachment B of the submission.

Retain as notified.

Amend MINZ - O2 as follows:

To ensure exploration, extraction and processing of minerals within the MINZ - Mineral Extraction Zone ~~minimises-manages~~adverse effects on the environment, the community and the relationship of Poutini Ngāi Tahu with their ancestral lands, sites and areas of significance, water, wāhi tapu and other taonga.

Mineral Extraction Zone	MINZ - O2	Support in part	This objective recognises the need to address adverse effects, however a wo
Mineral Extraction Zone	Mineral Extraction Policies		
Mineral Extraction Zone	MINZ - P1	Support	This policy encourages the recognition of important mineral resources throug
Mineral Extraction Zone	MINZ - P2	Support	This policy recognises the need to protect mineral resources from reverse sei

Retain as notified.

Retain as notified.

Amend MINZ - P3 as follows:

To ensure that after mineral extraction, all mine sites in the MINZ - Mineral Extraction Zone are rehabilitated to ~~the best practicable practice-~~ environmental standards and to provide for future use and activities appropriate to the area.

Amend MINZ - P4 as follows:

Maintain the quality of the environment, landscape, ecological values, character and amenity of the areas surrounding the MINZ - Mineral Extraction Zone as far as practicable by:

- a.Utilising management, monitoring, rehabilitation and mine closure plans as a key tool;
- b.Managing dust, noise, vibration, access and lighting to maintain amenity values;
- c.Managing traffic generation, load type and vehicle characteristics on the operation and maintenance of the transport network;
- d.Managing ~~adverse effects impacts~~ on significant indigenous vegetation and significant habitats of indigenous fauna;

Mineral Extraction Zone	MINZ - P4	Amend	This policy recognises the need to address adverse effects, however a wordir
Mineral Extraction Zone	MINZ - P5	Support	These policies effectively manage the relationship between the MINZ and SNA/SASM, so recourse to rules for indigenous vegetation and SASM are not required.
Mineral Extraction Zone	MINZ - P6	Support	These policies effectively manage the relationship between the MINZ and SNA/SASM, so recourse to rules for indigenous vegetation and SASM are not required.

and significant habitats of indigenous fauna;

These policies effectively manage the relationship between the MINZ and SNA/SASM, so recourse to rules for indigenous vegetation and SASM are not required.

Amend MINZ - P4 as follows:

Maintain the quality of the environment, landscape, ecological values, character and amenity of the areas surrounding the MINZ - Mineral Extraction Zone as far as practicable by:

- a.Utilising management, monitoring, rehabilitation and mine closure plans as a key tool;
- b.Managing dust, noise, vibration, access and lighting to maintain amenity values;
- c.Managing traffic generation, load type and vehicle characteristics on the operation and maintenance of the transport network;
- d.Managing ~~adverse effects impacts~~ on significant indigenous vegetation and significant habitats of indigenous fauna;

Mineral Extraction Zone	MINZ - P7	Support in part	This policy recognises the need to address adverse effects, however a wordir
Mineral Extraction Zone	MINZ - P8	Support	This policy provides for adverse effects to be managed using the effects man
Mineral Extraction Zone	Rules		
Mineral Extraction Zone	Note:		
Mineral Extraction Zone	Permitted Activities		
Mineral Extraction Zone	MINZ - R1		

and significant habitats of indigenous fauna;

Retain as notified.

An additional advice note is sought as follows:

"This rule does not override the protection of consented activities under Section 9(3)(a) of the Resource Management Act 1991 or existing use rights provided for under Section 10 of the Act."

Retain as notified.

Mineral Extraction Zone	MINZ - R2	Support in part	This rule seeks to provide for minerals extraction activities where lawfully est
Mineral Extraction Zone	MINZ - R3	Support	This rule provides for ancillary activities and is supported.
Mineral Extraction Zone	MINZ - R4		
Mineral Extraction Zone	MINZ - R5		
Mineral Extraction Zone	Controlled Activities		
Mineral Extraction Zone	MINZ - R6	Support	The activity status for vegetation clearance is supported.
Mineral Extraction Zone	Restricted Discretionary Activities		
Mineral Extraction Zone	MINZ - R7	Support	The activity status for mineral extraction activities is supported
Mineral Extraction Zone	Discretionary Activities		
Mineral Extraction Zone	MINZ - R8		
Mineral Extraction Zone	Non-complying Activities		
Mineral Extraction Zone	MINZ - R9		
Mineral Extraction Zone	MINZ - R10		

provided for under Section 10 of the Act."

Retain as notified.

Retain as notified.

Retain as notified.

Māori Purpose Zone Section

Port Zone Section

Stadium Zone Section

Scenic Visitor Zone Section

Development Areas Section

Designations Section

PART 4 - APPENDICES Section

Schedules Section

SCHED1A - SCHEDULE OF HISTORIC HERITAGE ITEMS AND AREAS Section

SCHED1B - SCHEDULE OF ARCHEOLOGICAL SITES Section

SCHED2 - SCHEDULE OF NOTABLE TREES Section

SCHED3 - SITES AND AREAS OF SIGNIFICANCE TO MĀORI Section

SCHED4 - SCHEDULE OF SIGNIFICANT NATURAL AREAS Section

SCHED5 - SCHEDULE OF OUTSTANDING NATURAL LANDSCAPES Section

SCHED6 - SCHEDULE OF OUTSTANDING NATURAL FEATURES Section

SCHED7 - SCHEDULE OF HIGH COASTAL NATURAL CHARACTER Section

SCHED8 - SCHEDULE OF OUTSTANDING COASTAL NATURAL CHARACTER Section

SCHED9 - LAWFULLY ESTABLISHED MINERAL EXTRACTION AND PROCESSING AREAS Section

SCHED9 - LAWFULLY ESTABLISHED MINERAL E)	SCHED9 - LAWFULLY ESTABLISHED MINERAL EXTRACTION AND PROCESSING AREAS	Amend	The submitter supports the inclusion of the schedule of lawfully established r
SCHED9 - LAWFULLY ESTABLISHED MINERAL E)	Buller Coalfield Zone		
SCHED9 - LAWFULLY ESTABLISHED MINERAL E)	Stockton Mine		
SCHED9 - LAWFULLY ESTABLISHED MINERAL E)	Denniston Plateau		
SCHED9 - LAWFULLY ESTABLISHED MINERAL E)	Mineral Extraction Zone		
SCHED9 - LAWFULLY ESTABLISHED MINERAL E)	Roa Mine Blackball		

Retain lawfully established minerals extraction zones and include the Rimu Channel

SCHED9 - LAWFULLY ESTABLISHED MINERAL E) Rajah Mine, Blackball
 SCHED9 - LAWFULLY ESTABLISHED MINERAL E) Echo Mine, Reefton
 SCHED9 - LAWFULLY ESTABLISHED MINERAL E) New Creek Mine, New Creek
 SCHED9 - LAWFULLY ESTABLISHED MINERAL E) Giles Creek Mine Reefton
 SCHED9 - LAWFULLY ESTABLISHED MINERAL E) Mai Mai Siding
 SCHED9 - LAWFULLY ESTABLISHED MINERAL E) Reefton Distribution Centre
 SCHED9 - LAWFULLY ESTABLISHED MINERAL E) Island Block Mine Reefton
 SCHED9 - LAWFULLY ESTABLISHED MINERAL E) Grey Valley Distribution Centre, Ikamatua
 SCHED9 - LAWFULLY ESTABLISHED MINERAL E) Strongman Mine, Rapahoe
 SCHED9 - LAWFULLY ESTABLISHED MINERAL E) Strongman Mine, Access and infrastructure
 SCHED9 - LAWFULLY ESTABLISHED MINERAL E) Strongman East Mine
 SCHED9 - LAWFULLY ESTABLISHED MINERAL E) Rapahoe Coal Yard
 SCHED9 - LAWFULLY ESTABLISHED MINERAL E) Rocky Creek Coal Washery
 SCHED9 - LAWFULLY ESTABLISHED MINERAL E) Kaiata Yard
 SCHED9 - LAWFULLY ESTABLISHED MINERAL E) Kiwi Quarry
 SCHED9 - LAWFULLY ESTABLISHED MINERAL E) Karamea Quarry
 SCHED9 - LAWFULLY ESTABLISHED MINERAL E) Blackball Quarry
 SCHED9 - LAWFULLY ESTABLISHED MINERAL E) Okuru Quarry
 SCHED9 - LAWFULLY ESTABLISHED MINERAL E) BRM Developments lanthe Forest Mine
 SCHED9 - LAWFULLY ESTABLISHED MINERAL E) Birchfields Ross Mine
 SCHED9 - LAWFULLY ESTABLISHED MINERAL E) R&M Mining Mine Ross Township
 SCHED9 - LAWFULLY ESTABLISHED MINERAL E) Reefton Restoration Project/ Globe Progress Mine
 SCHED9 - LAWFULLY ESTABLISHED MINERAL E) Snowy River Gold Mine
 SCHED9 - LAWFULLY ESTABLISHED MINERAL E) Westland Schist Quarry
 SCHED9 - LAWFULLY ESTABLISHED MINERAL E) Karamea Lime Quarry

SCHED10 - PREVIOUSLY MINED LOCATIONS IN THE RURAL AND OPEN SPACE AND RECREATION ZONES Section

Appendices Section

Appendix One: Transport Performance Standards Section

Appendix Two: Recession Planes Section

Appendix Three: Design Guidelines Section

Appendix Four: Accidental Discovery Protocols Section

Appendix Five: Statutory Acknowledgements Section

Appendix Six: Nohoanga Entitlements Section

Appendix Seven: Mineral Extraction Management Plan Requirements Section

Appendix Seven: Mineral Extraction Managem Appendix Seven: Mineral Extraction Management Plan Requirements

Management Plan as follows:

- 1.Introduction
 - i.Statutory Approvals – status
 - ii.Location
 - iii.Overview of the mineral extraction operations
- 2.Recliving Environment (address all that are relevant)
 - i.Climate
 - ii.Geology
 - iii.Hydrology – including presence of lakes, wetlands and waterways
 - iv.Terrestrial ecology including key species
 - v.Landscape context
 - vi.Neighbouring land uses
 - vii.Coastal environment
- 3.Management of Environmental Effects
 - i.Terrestrial Ecology (address all that are relevant)
 - a.Native vegetation
 - b.Native fauna
 - c.Significant natural areas
 - d.Key species
 - e.Key risks to be managed
 - f.Any specific species or ecosystem management plans
 - ii.Landscape values and Amenity (address all that are relevant)
 - a.Landscape values
 - b.Neighbouring landuses
 - iii. Management of hazardous substances

Appendix Seven: Mineral Extraction Managem Outline of Content Requirements for a Mineral Extraction Management Plan

Oppose in part The proposed Mineral Extraction Management Plan requirements are preser

Appendix Eight: Community Living Predinct Concept Plans Section

Appendix Nine: Airport Approach Path Overlay Section

Appendix Ten: New Zealand Archaeological Association Sites of Māori Origin Section