



SUBMISSIONS ON TE TAI O POUTINI PLAN
Under Clause 6 of the First Schedule of the Resource Management Act 1991

To: West Coast Regional Council

By email: info@tppp.nz

Submitter: Birchfield Ross Mining Limited

Address for Service: Tai Poutini Resources Ltd
PO Box 257
Greymouth 7840

Jorja.hunt@tpri.co.nz

1. Submitters

- 1.1 On behalf of Birchfield Ross Mining Limited (the submitter), we submit on the Proposed Te Tai o Poutini Plan.
- 1.2 The submitter could not gain an advantage in trade competition through this submission.
- 1.3 The submitter owns multiple land holdings in the West Coast Region, and in addition has numerous mining permits, resource consents, and other lawfully established and operating activities.
- 1.4 The reasons for the submission and the relief sought are set out below and comprehensive provision by provision detail is included in the attached table in the template provided by the West Coast Regional Council.
- 1.5 The suggested revisions do not limit the generality of the reasons for the submission.
- 1.6 The submitter wishes to be heard in support of this submission.
- 1.7 The reasons for the submission and the relief sought are set out below.
- 1.8 The submitter will consider presenting a joint case with others presenting similar submissions.



1.9 The specific provisions which this submission relates to are:

- 1.9.1 Whole Plan
- 1.9.2 Introduction – Description of the Districts
- 1.9.3 How The Plan Works – Minerals Extraction Zone
- 1.9.4 Definitions
- 1.9.5 Strategic Direction Overview
- 1.9.6 MIN – O1
- 1.9.7 MIN – O2
- 1.9.8 MIN – O3
- 1.9.9 MIN – O4
- 1.9.10 MIN – O6
- 1.9.11 NENV – O3
- 1.9.12 NENV – O4
- 1.9.13 POU – O2
- 1.9.14 POU – P6
- 1.9.15 POU – P10
- 1.9.16 SASM – O3
- 1.9.17 SASM – P1
- 1.9.18 SASM – P6
- 1.9.19 SASM – P7
- 1.9.20 SASM – P8
- 1.9.21 Ecosystems and Indigenous Biodiversity
- 1.9.22 ECO – O2
- 1.9.23 ECO – O4
- 1.9.24 ECO – P2
- 1.9.25 ECO – P3
- 1.9.26 ECO – P6
- 1.9.27 ECO – P7
- 1.9.28 ECO – P9
- 1.9.29 ECO – R1
- 1.9.30 ECO – R2
- 1.9.31 ECO – R5
- 1.9.32 NFL – P1
- 1.9.33 NFL – P2
- 1.9.34 NFL – P3
- 1.9.35 NFL – P5
- 1.9.36 NFL – R6
- 1.9.37 NC – O1
- 1.9.38 NC – O3
- 1.9.39 NC – P2
- 1.9.40 NC – P3
- 1.9.41 NC – R3
- 1.9.42 CE – O1
- 1.9.43 CE – O3



- 1.9.44 CE – P3
- 1.9.45 CE – P5
- 1.9.46 CE – R4
- 1.9.47 EW – O1
- 1.9.48 EW – P1
- 1.9.49 EW – R1
- 1.9.50 EW – R2
- 1.9.51 EW – P4
- 1.9.52 EW – R6
- 1.9.53 EW – R8
- 1.9.54 LIGHT – O1
- 1.9.55 LIGHT – P1
- 1.9.56 LIGHT – P2
- 1.9.57 LIGHT – R1
- 1.9.58 LIGHT – R2
- 1.9.59 Open space and Recreation Zones
- 1.9.60 Open space and Recreation Zones Overview
- 1.9.61 OSRZ – P10
- 1.9.62 OSRZ – P14
- 1.9.63 OSZ – R20
- 1.9.64 OSZ – R22
- 1.9.65 GIZ – R6
- 1.9.66 GIZ – R8
- 1.9.67 RURZ – O1
- 1.9.68 RURZ – O5
- 1.9.69 RURZ – P1
- 1.9.70 RURZ – P3
- 1.9.71 RURZ – P15
- 1.9.72 RURZ – P18
- 1.9.73 RURZ – P19
- 1.9.74 RURZ – P21
- 1.9.75 RURZ – P22
- 1.9.76 RURZ – P23
- 1.9.77 RURZ – P24
- 1.9.78 RURZ – P25
- 1.9.79 GRUZ – R11
- 1.9.80 GRUZ – R12
- 1.9.81 GRUZ – R18
- 1.9.82 GRUZ – R24
- 1.9.83 GRUZ – R25
- 1.9.84 GRUZ – R32
- 1.9.85 Special Purpose Zones - Mineral Extraction Zone: Overview
- 1.9.86 MINZ – O1
- 1.9.87 MINZ – O2
- 1.9.88 MINZ – P1



- 1.9.89 MINZ – P2
- 1.9.90 MINZ – P3
- 1.9.91 MINZ – P4
- 1.9.92 MINZ – P5
- 1.9.93 MINZ – P6
- 1.9.94 MINZ – P7
- 1.9.95 MINZ – P8
- 1.9.96 MINZ – R2
- 1.9.97 MINZ – R3
- 1.9.98 MINZ – R10
- 1.9.99 MINZ Maps – support
- 1.9.100 MAPS/ZONING – REZONE REQUEST

2. Background to the submission

- 2.1 Birchfields Ross Mining Limited hold a number of mining, exploration permits and resource consents on across various parcels of land on the West Coast for the purpose of mining gold including MP41702 and MP 53078 at Ross and MP53078 at the Mikonui River. A map showing the location of the submitter's interests is enclosed as **Attachment A**.
- 2.2 The submitters have land or other interests which are located within the General Rural Zone, Open Space Zone, Settlement Zone, Industrial Zone, and Mineral Extraction Zone. There interests are affected by multiple overlays including the Coastal Environment and Pounamu Management Area.

3. Summary of submission

- 3.1 The submitters have carefully considered the Proposed Plan and are supportive of a number of provisions which generally align with the provisions that the submitters were consulted on during the pre-notification phase of the Proposed Plan development, in particular the inclusion of the Minerals Extraction Zone over the Ross goldfields area, and the General Industrial Zone over the submitter's yard area at Ross. However, a number of provisions have been included which were not consulted upon, and which affect the application of the provisions which were consulted on. These include the overlay chapters, including Coastal Environment, Outstanding Natural Landscapes and the Pounamu Management Areas. There are also additional areas which have Minerals Permits granted for mineral extraction which the submitter considers should be included in the Minerals Extraction Zone in the Mikonui River valley. A map showing the area which the submitter requests to be rezoned is enclosed as **Attachment B**.
- 3.2 As a result, the Proposed Plan contains a number of provisions which are restrictive for both current and future mining operations.

- 3.3 Minerals extraction activities (and prospecting and exploration) are limited geographically – they can only occur where the resource exists and are thus have functional and operational requirements to operate within the Proposed Plan overlays.
- 3.4 The submitter consider that the Proposed Plan does not entirely give effect to the enabling framework set by the recent West Coast Regional Policy Statement 2020, which provides for economic development and activity, while also seeking to protect the environment.
- 3.5 The submitter notes that the Mikonui River has not been included in the Minerals Extraction Zone. This area covers a large gold resource which has been proven through extensive drilling over the past 30 years and is considered one of the largest/richest undeveloped alluvial gold fields in New Zealand. Much of this resource is located within private farmland within the Mikonui Valley.
- 3.6 The submission seeks specific relief to ensure there is a consenting pathway for the submitters' current and future alluvial mining operations, and recognition of the significance of the mining industry to the West Coast Region as it underpins economic and social wellbeing. In particular, the submitter's mining operations at Ross are a significant employer in the Westland District. Mining and the industries which support it provide job stability and high wage employment, retention of talent and people, foster social connections and are an absolutely vital component of the West Coast community. The Proposed Plan needs to support this vital industry, as the preceding three District Plans have done for the past 15 years.
- 3.7 The submission supports aspects of the Proposed Plan which recognise the importance of the mining industry and seeks amendments to aspects which are problematic or restrictive.

4. Reasons for the submission

- 4.1 The specific reasons for each submission point on specific provisions are included in **Attachment C**.

5. Relief sought

- 5.1 The submitter seeks a Minerals Extraction Zone which covers the Mikonui Valley as outlines in Attachment A.
- 5.2 The specific relief sought is enclosed in the table attached as Attachment C to this submission.
- 5.3 Alternative, consequential, or necessary additional relief to give effect to the matters raised generally in this submission, and to address any matters affected by introduced by national environmental standards and national policy statements.



Signed on behalf of **Birchfield Ross Mining Limited**

Jorja Hunt

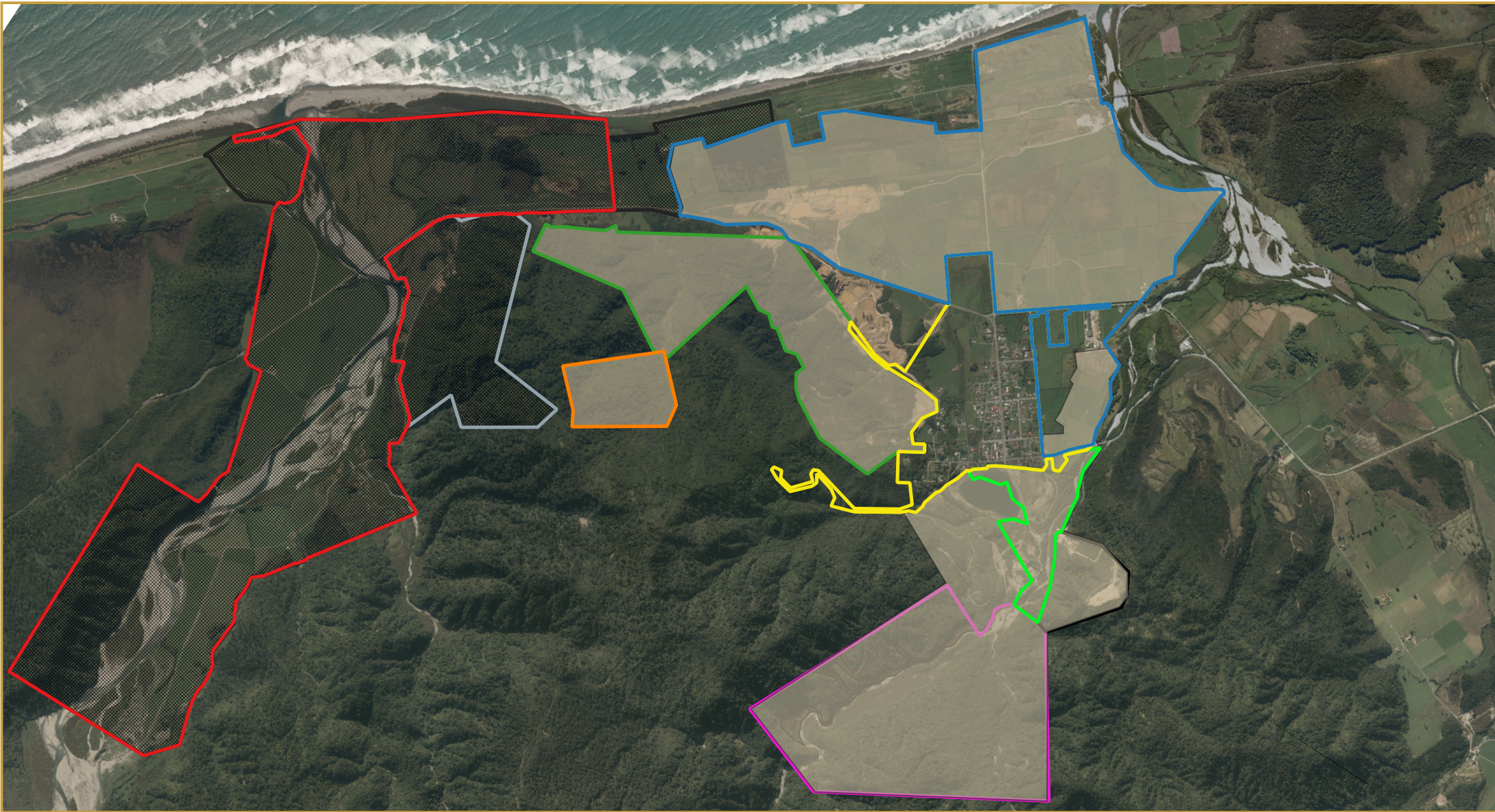
Resource Management Consultant

Tai Poutini Resources Ltd

Attachment A: Map of submitter's interests

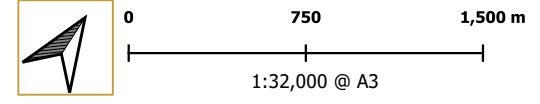
Attachment B: Map of additional Mineral Extraction Zone area

Attachment C: TTPP Relief Sought Table



TTPP Plan Submission
Ross Mineral Extraction Zone

Produced for: Birchfields Ross Mining
 by M. Hansen (TPRL) on 07/11/2022



Projection: WSG84 / NZTM2000
 Background Imagery: ESRI Satellite
 Data Sources: LINZ, Client and or TPRL Data

Legend:

- MP 41702
- MP 53078
- MP 57462
- MP 41784
- MP 53355
- ML 323273
- MP 50125
- Ross Mineral Extraction Zone Extension
- Mineral Extraction Zone Nov 2022
- ML 321041/MPA 60890.01
- MP 60332

This map/plan has been produced by Tai Poutini Resources Ltd for the purpose of providing information as part of the agreed upon scope and services with the client. This graphic is solely for the client. Any use or reliance on any information within by a third party without prior approval by the client is at their own risk. At the time of production, all information is assumed accurate. Tai Poutini Resources Ltd holds no accountability for any liability or action arising from any incomplete or inaccurate information within this map/plan. © TPRL 2021



Submitter name: Birchfields Ross Mining Ltd
 Contact person: Jorja Hunt, Tai Poutini Resources
 Contact email: jorja.hunt@tprl.co.nz

Instructions: This spreadsheet template has been made available to assist submitters wishing to make submissions on a significant number of provisions in the Proposed Plan.

If you are using this spreadsheet, please also complete a submission form with the details of the submitter. This can be done by either:
 1. downloading and completing a submission form from the Council's website and lodging the form and this spreadsheet via email to info@tppp.nz; or
 2. using the online submission tool accessible from the Council's website to upload this document as a supporting document. If you choose this method, please add one submission point to your online submission and select [General] as the Plan Section and [General] as the Provision.

To add your submission points to this spreadsheet, please scroll to the relevant Plan Section and click the '+' symbol to expand the group to show all of the provisions within that section. In the row containing the provision you wish to submit on, select one of the options from the Support/oppose column (click in the relevant cell and an arrow button will appear that presents a dropdown list). Add the reasons and the decision you seek in the next two columns. Please ensure you add both reasons and decision sought as these are an important part of your submission. If you are asking for a new provision to be added to a section, please include that in the row for the first provision in that section (the spreadsheet does not allow new rows to be added). Similarly, if you wish to make a submission that relates to a whole section of the Plan, please include that in row for the first provision in that section.

If you require any assistance with using this spreadsheet, please contact the District Plan team at info@tppp.nz.

Plan section	Provision	Support Oppose	Reasons	Decision sought
[General]				
Whole Plan				
Whole Plan	Whole plan	Neutral	To enable alternative relief which may give effect to the matters in the subm	Alternative, consequential, or necessary additional relief to give effect to the matters raised generally in this submission.
Introduction Section				
Introduction	Introduction			
Introduction	Mihi			
Introduction	He Mihi			
Introduction	Description of the Districts	Support	This section of the Proposed Plan sets out the history of the three districts th	Retain as notified.
How The Plan Works Section				
How The Plan Works	How The Plan Works			
How The Plan Works	Satutory Context			
How The Plan Works	Figure 1 RMA Plan relationships			
How The Plan Works	Figure 2 RMA responsibilities and where they have effect			
How The Plan Works	Te Tiriti o Wāitangi (Treaty of Waitangi) and the Resource Management Act			
How The Plan Works	General Approach			
How The Plan Works	Table 1: Classes of Activities			
How The Plan Works	Step 1 - Check the planning maps			
How The Plan Works	Step 2 - Locate the relevant zone rules			
How The Plan Works	Step 3 - Locate the relevant district-wide rules			
How The Plan Works	Step 4 - Check the relevant standards			
How The Plan Works	Step 5 - Apply for resource consent			
How The Plan Works	Table 2: National Environmental Standards and rules in Te Tai o Poutini Plan			
How The Plan Works	Notification			
How The Plan Works	Information to be submitted with resource consents			
How The Plan Works	Legal effect of Rules			
How The Plan Works	Cross Boundary Matters			
How The Plan Works	Management of Cross Boundary Matters			
How The Plan Works	Relationships between spatial layers			
How The Plan Works	Spatial layer name			
How The Plan Works	Zone			
How The Plan Works	Overlay			
How The Plan Works	Precinct			
How The Plan Works	Specific controls			
How The Plan Works	Development area			
How The Plan Works	Designation			
How The Plan Works	Heritage Order			
How The Plan Works	Residential Zone Discriptions			
How The Plan Works	General Residential Zone			
How The Plan Works	Large Lot Residential Zone			
How The Plan Works	Medium Density Residential Zone			
How The Plan Works	Residential Zones			
How The Plan Works	Rural Zone Descriptions			
How The Plan Works	General Rural Zone			
How The Plan Works	Rural Lifestyle Zone			
How The Plan Works	Settlement Zone			
How The Plan Works	Rural Zones			
How The Plan Works	Commercial and Mixed Use Zone Descriptions			
How The Plan Works	Commercial Zone			
How The Plan Works	Mixed Use Zone			
How The Plan Works	Neighbourhood Centre Zone			
How The Plan Works	Town Centre Zone			
How The Plan Works	Commercial and Mixed Use Zones			
How The Plan Works	Industrial Zone Descriptions			
How The Plan Works	General Industrial Zone			
How The Plan Works	Heavy Industrial Zone			
How The Plan Works	Light Industrial Zone			
How The Plan Works	Industrial Zones			
How The Plan Works	Special Purpose Zone Descriptions			
How The Plan Works	Airport Zone			
How The Plan Works	Buller Coalfield Zone			
How The Plan Works	Future Urban Zone			
How The Plan Works	Hospital Zone			
			Amend the explanation of the Mineral Extraction Zone as follows:	
				Areas where mineral extraction and ancillary activities are <u>enabled and</u>
How The Plan Works	Mineral Extraction Zone	Amend	The purpose of the Mineral Extraction Zone is to reflect that mineral extracti expected to be the predominant use.	
How The Plan Works	Māori Purpose Zone			
How The Plan Works	Port Zone			
How The Plan Works	Stadium Zone			
How The Plan Works	Scenic Visitor Zone			
How The Plan Works	Special Purpose Zones			
How The Plan Works	Open Space and Recreation Zone Descriptions			
How The Plan Works	Natural Open Space Zone			
How The Plan Works	Open Space Zone			
How The Plan Works	Sport and Active Recreation Zone			
How The Plan Works	Open Space and Recreation Zones			
How The Plan Works	Precincts			
How The Plan Works	Greymouth Town Centre Precinct			
How The Plan Works	Hokitika Town Centre Precinct			
How The Plan Works	Reefton Town Centre Precinct			
How The Plan Works	Westport Town Centre Precinct			
How The Plan Works	Settlement Centre Precinct			

How The Plan Works Rural Residential Precinct
 How The Plan Works Coastal Settlement Precinct
 How The Plan Works Community Living Precinct
 How The Plan Works Overlays
 How The Plan Works Rifle Range Protection Areas
 How The Plan Works Airport Approach Paths
 How The Plan Works Airport Noise Contour Overlays
 How The Plan Works Electricity Transmission and Distribution Yard
 How The Plan Works Historic Heritage Items and Areas
 How The Plan Works Notable Trees
 How The Plan Works Sites and Areas of Significance to Māori
 How The Plan Works Statutory Acknowledgement Areas
 How The Plan Works Outstanding Natural Features Overlay
 How The Plan Works Outstanding Natural Landscapes Overlay
 How The Plan Works Outstanding Coastal Environment Area
 How The Plan Works High Coastal Natural Character Area
 How The Plan Works General Coastal Environment Area
 How The Plan Works Lawfully Established Mineral Extraction and Processing Areas
 How The Plan Works Previously Mined Locations in Rural and Open Space Zones
 How The Plan Works Nohoanga Entitlements
 How The Plan Works Natural Hazard Overlays
 How The Plan Works Road Classification
 How The Plan Works Specific Control Areas
 How The Plan Works Jackson Bay Port
 How The Plan Works Main Street Frontage Streets
 How The Plan Works Facade Control Streets

Interpretation Section

Interpretation Interpretation

Insert PRIMARY PRODUCTION definition as follows:

"means:
a.any aquaculture, agricultural, pastoral, horticultural, mining, quarrying or forestry activities; and
b.includes initial processing, as an ancillary activity, of commodities that result from the listed activities in a);
c.includes any land and buildings used for the production of the commodities from a) and used for the initial processing of the commodities in b); but
d.excludes further processing of those commodities into a different product."

A new definition is sought - PRIMARY PRODUCTION - which is contained in the 2019 National Planning Standards. This definition recognises that primary production which typically occurs in a rural environment includes mining activities.

Insert MAJOR HAZARD FACILITY definition as follows:

Has the same meaning as the Health and Safety at Work (Major Hazard Facilities) Regulations 2016
means a facility that WorkSafe has designated as a lower tier major hazard facility or an upper tier major hazard facility under regulation 19 or 20

A new definition is sought - MAJOR HAZARD FACILITY - to assist in interpretation of the relevant objectives and policies in the hazardous substances chapter and to make it clear where these provisions apply.

Interpretation Definitions
 Interpretation Advice Note
 Interpretation ACCESSORY BUILDING
 Interpretation ACCESSWAY
 Interpretation ACTIVITY
 Interpretation ADDITION
 Interpretation ADDITIONS AND ALTERATIONS
 Interpretation ADJACENT
 Interpretation ADJOINING
 Interpretation AGRICULTURAL, PASTORAL AND HORTICULTURAL ACTIVITIES
 Interpretation AIRPORT ACTIVITIES
 Interpretation ALLOTMENT
 Interpretation AMENITY VALUES
 Interpretation ANCILLARY ACTIVITY
 Interpretation APPROVED BUILDING PLATFORM
 Interpretation ARCHAEOLOGICAL SITE
 Interpretation AREA OF SIGNIFICANT INDIGENOUS BIODIVERSITY
 Interpretation ARTIFICIAL LAKE OR POND
 Interpretation BED
 Interpretation BOUNDARY ADJUSTMENT
 Interpretation BROWNFIELD
 Interpretation BUILDING
 Interpretation BUILDING FOOTPRINT
 Interpretation BUILDING PLATFORM
 Interpretation CAMPING GROUNDS
 Interpretation CEMETARIES
 Interpretation CLEANFILL
 Interpretation COASTAL ENVIRONMENT
 Interpretation COMMERCIAL ACTIVITY
 Interpretation COMMUNITY CORRECTIONS ACTIVITY
 Interpretation COMMUNITY FACILITIES, EDUCATION FACILITIES and HEALTH FACILITIES
 Interpretation COMMUNITY FACILITY
 Interpretation COMMUNITY SCALE
 Interpretation COMMUNITY SIGN
 Interpretation CONSERVATION ACTIVITIES
 Interpretation CONTAMINATED LAND
 Interpretation COUNCIL ENGINEERING STANDARDS
 Interpretation CRITICAL INFRASTRUCTURE
 Interpretation CRITICAL RESPONSE FACILITIES
 Interpretation CULTURAL LANDSCAPE
 Interpretation DUST

Amend the definition of earthworks to exclude minerals extraction prospecting and exploration, as follows:

"means the alteration or disturbance of land, including by moving, removing, placing, blading, cutting, contouring, filling or excavating of earth (or any matter constituting the land including soil, clay, sand and rock); but excludes gardening, cultivation, mineral prospecting, mineral extraction, mineral exploration and disturbance of land for the installation of

Oppose in part The definition of earthworks would currently capture minerals extraction, exp fenceposts."

Interpretation EARTHWORKS
 Interpretation EDUCATIONAL FACILITY
 Interpretation EMERGENCY SERVICE FACILITY
 Interpretation ENERGY ACTIVITY
 Interpretation ESPLANADE RESERVE
 Interpretation ESPLANADE STRIP
 Interpretation EXISTING BUILDINGS AND STRUCTURES
 Interpretation EXISTING USE RIGHTS

Interpretation	FAÇADE CONTROL STREET		
Interpretation	FARM QUARRY		
Interpretation	FREEDOM CAMPING		
Interpretation	FUNCTIONAL NEED	Support	The submitter supports the inclusion of the National Planning Standards defi Retain as notified.
Interpretation	GREENFIELD		
Interpretation	GROSS FLOOR AREA		
Interpretation	GROUND LEVEL		
Interpretation	HABITABLE ROOM		
Interpretation	HEALTHCARE AND MEDICAL ACTIVITIES		
Interpretation	HEAVY VEHICLE		
Interpretation	HEIGHT		
Interpretation	HERITAGE FABRIC		
Interpretation	HERITAGE PROFESSIONAL		
Interpretation	HERITAGE RESOURCE		
Interpretation	HISTORIC HERITAGE		
Interpretation	HOME BUSINESS		
Interpretation	HOMESTAY		
Interpretation	INDIGENOUS VEGETATION CLEARANCE		
Interpretation	INDUSTRIAL ACTIVITY	Support	The submitter supports the inclusion of the definition of industrial activity fr Retain as notified.
Interpretation	INFRASTRUCTURE		
Interpretation	INTENSIVE INDOOR PRIMARY PRODUCTION		
Interpretation	IWI/PAPATIPU RŪNANGA MANAGEMENT PLAN		
Interpretation	LAeq		
Interpretation	LAF(max)		
Interpretation	LAKE		
Interpretation	LAND DISTURBANCE		
Interpretation	LARGE SCALE		
Interpretation	LAWFULLY ESTABLISHED		
Interpretation	MAIN STREET FRONTAGE		
Interpretation	MAINTENANCE		
Interpretation	MĀORI LAND		
Interpretation	MĀORI PURPOSE ACTIVITIES		
Interpretation	MINERAL	Amend	The submitter supports the inclusion of the mineral exploration definition, h
Interpretation	MINERAL EXPLORATION	Amend	The definition of 'Mineral Extraction' is supported. However, the submitter s ... and includes ancillary activities such as earthworks, <u>indigenous vegetation clearance/vegetation clearance</u> , landscaping and rehabilitation works ...
Interpretation	MINERAL EXTRACTION		
Interpretation	MINERAL EXTRACTION MANAGEMENT PLAN		
			has the same meaning as in the Crown Minerals Act 1991 (as set out below)
			...
			iii. Taking samples by hand or hand held methods; and
			iv. Taking small samples offshore by low-impact mechanical methods; and
			v. <u>ancillary activities reasonably necessary to identify land likely to contain</u>
Interpretation	MINERAL PROSPECTING	Amend	The submitter supports the inclusion of the mineral prospecting defintion, h <u>mineral deposits or occurrences.</u>
Interpretation	MINIMUM LOT SIZE		
Interpretation	MINOR RESIDENTIAL UNIT		
Interpretation	NATIONAL GRID		
Interpretation	NATIONAL GRID SUBDIVISION CORRIDOR		
Interpretation	NATIONAL GRID YARD		
Interpretation	NATURAL HAZARD MITIGATION ACTIVITIES		
Interpretation	NATURAL HAZARD MITIGATION STRUCTURE		
Interpretation	NET SITE AREA		
Interpretation	NETWORK UTILITY OPERATOR		
Interpretation	NOISE		
Interpretation	NOTIONAL BOUNDARY		
Interpretation	OFFICIAL SIGN		
Interpretation	OPEN SPACE MANAGEMENT PLAN		
Interpretation	OPERATIONAL NEED	Support	The submitter supports the inclusion of the National Planning Standards defi Retain as notified.
Interpretation	OUTDOOR LIVING SPACE		
Interpretation	OUTSTANDING COASTAL ENVIRONMENT		
Interpretation	OVERLAY CHAPTER		
Interpretation	PAPAKĀINGA		
Interpretation	PAPATIPU RŪNANGA		
Interpretation	PARKS FACILITIES		
Interpretation	PARKS FURNITURE		
Interpretation	POINT STRIP		
Interpretation	PORT ACTIVITIES		
Interpretation	POUTINI NGĀI TAHU		
Interpretation	POUTINI NGĀI TAHU ACTIVITIES		
Interpretation	RECREATION ACTIVITY		
Interpretation	RECONSTRUCTION		
Interpretation	RELOCATED BUILDING		
Interpretation	RELOCATION		
Interpretation	RENEWABLE ELECTRICITY GENERATION		
Interpretation	RENEWABLE ELECTRICITY GENERATION ACTIVITIES		
Interpretation	REPOSITIONING		
Interpretation	RESEARCH ACTIVITY		
Interpretation	RESIDENTIAL ACTIVITY		
Interpretation	RESIDENTIAL BUILDING		
Interpretation	RESIDENTIAL UNIT		
Interpretation	RETAIL ACTIVITY		
Interpretation	RETIREMENT VILLAGE		
Interpretation	REVERSE SENSITIVITY		
Interpretation	RIPARIAN MARGIN		
Interpretation	RIVER		
Interpretation	ROOT PROTECTION AREA		
Interpretation	RURAL INDUSTRY		
Interpretation	SENSITIVE ACTIVITY		
Interpretation	SHARED PATHWAY		
Interpretation	SIGN		
Interpretation	SIGNIFICANT ELECTRICITY DISTRIBUTION LINE		
Interpretation	SIGNIFICANT NATURAL AREA		
Interpretation	SITE		
Interpretation	SMALL SCALE		
Interpretation	STADIUM ACTIVITY		
Interpretation	STORMWATER		
Interpretation	STRUCTURE		
Interpretation	STRUCTURE PLAN		
Interpretation	SUBSTATION (DISTRIBUTION)		
Interpretation	SUBSTATION (ZONE)		
Interpretation	SUPPORTED RESIDENTIAL ACCOMMODATION		
Interpretation	TEMPORARY ACTIVITY		
Interpretation	TEMPORARY MILITARY TRAINING ACTIVITY		
Interpretation	TRADE RETAIL AND TRADE SUPPLIERS		

Interpretation TRANSMISSION LINES
 Interpretation UNOCCUPIED BUILDING
 Interpretation UPGRADING
 Interpretation URBAN ZONE
 Interpretation VEHICLE CROSSING
 Interpretation VISITOR ACCOMMODATION
 Interpretation WATERBODY
 Interpretation WETLAND

Glossary Section

Abbreviations Section

National Direction Instruments Section

Tangata Whenua Section

PART 2 - DISTRICT WIDE MATTERS Section

Strategic Direction Section

Strategic Direction STRATEGIC DIRECTION
 Strategic Direction Strategic Directions Overview Support The submitter supports the overview, and in particular the requirement for i Retain as notified.
 Strategic Direction AG
 Strategic Direction Agriculture
 Strategic Direction Agriculture Strategic Objectives
 Strategic Direction AG - O1
 Strategic Direction AG - O2
 Strategic Direction CR
 Strategic Direction Connections and Resilience
 Strategic Direction Connections and Resilience Strategic Objectives
 Strategic Direction CR - O1
 Strategic Direction CR - O2
 Strategic Direction CR - O3
 Strategic Direction CR - O4
 Strategic Direction MIN
 Strategic Direction Mineral Extraction
 Strategic Direction MIN - O1 Support This objective recognises and provides for mining, and seeks to avoid duplica Retain as notified.
 Strategic Direction MIN - O2 Support This objective recognises that mineral extraction, prospecting and exploratio Retain as notified.
 Strategic Direction MIN - O3 Support This objective recognises that minerals only occur in certain locations, and th Retain as notified.

Amend the objective as follows:

"To ensure that new subdivision, use and development does not compromise existing-mineral extraction activities, including through reverse sensitivity to effects such as dust, noise and traffic generation."

Strategic Direction MIN - O4 Amend This objective seeks to protect mineral extraction activities from reverse sen:
 Strategic Direction MIN - O5
 Strategic Direction MIN - O6 Support This objective recognises that there may be effects associated with mining, a Retain as notified.
 Strategic Direction NENV
 Strategic Direction Natural Environment
 Strategic Direction Natural Environment Strategic Objectives
 Strategic Direction NENV- O1
 Strategic Direction NENV- O2

Amend NENV - O3 as follows:

"To recognise:
 a.The substantial contribution to the protection of natural environment values that is made by the existence of public conservation land in protecting significant areas, habitats and features;
 b.The functional and operational need for infrastructure and mineral extraction activities to sometimes be located in significant areas; and
 c.The need to support the ethic of stewardship and to consider the positive effects of the conservation estate in achieving the requirements of the RMA.
 Amend NENV - O4 as follows:

Strategic Direction NENV - O3 Support in part This objective recognises the fact that the West Coast has a large proportion of the RMA.
 Amend NENV - O4 as follows:
 "To clearly identify:
 a.Unique and important natural environment areas and features on the West Coast/Te Tai o Poutini which require a greater degree of protection must be protected; and
 b.Areas where subdivision, use and development to enable community economic, cultural and social wellbeing can be sustainably managed."

Strategic Direction NENV - O4 Oppose in part This objective suggests that some areas of the West Coast must be protected
 Strategic Direction POU Poutini Ngāi Tahu
 Strategic Direction Poutini Ngāi Tahu Strategic Objectives
 Strategic Direction POU - O1
 Strategic Direction POU - O2
 Strategic Direction POU - O3
 Strategic Direction POU - O4
 Strategic Direction Poutini Ngāi Tahu Strategic Policies
 Strategic Direction POU - P1
 Strategic Direction POU - P2
 Strategic Direction POU - P3
 Strategic Direction POU - P4
 Strategic Direction POU - P5
 Strategic Direction POU - P6 Oppose in part Why does an RMA document need to support the implementation of other legislation?
 Strategic Direction POU - P7
 Strategic Direction POU - P8
 Strategic Direction POU - P9

Amend POU - P10 as follows:

Protect Manage adverse effects on Poutini Ngāi Tahu taonga and cultural sites, including sites and areas of significance to Māori identified in Schedule Three while ensuring Poutini Ngāi Tahu's key role in decision making around their management.

Strategic Direction POU - P10 Support in part This objective is directive, and there are examples of minerals extraction with making around their management.
 Strategic Direction TRM
 Strategic Direction Tourism
 Strategic Direction Tourism Strategic Objective
 Strategic Direction TRM - O1
 Strategic Direction UFD
 Strategic Direction Urban form and development
 Strategic Direction Urban Form and Development Strategic Objective
 Strategic Direction UFD - O1

Energy Infrastructure and Transport Section

Energy Section

Infrastructure Section

Transport Section

HAZ - Hazards and Risks Section

Contaminated Land Section

Hazardous Substances Section

HCV - Historical and Cultural Values Section

Historic Heritage Section

Notable Trees Section

Sites and Areas of Significance to Māori Section

Sites and Areas of Significance to Māori	SASM
Sites and Areas of Significance to Māori	Sites and Areas of Significance to Māori
Sites and Areas of Significance to Māori	Overview
Sites and Areas of Significance to Māori	Sites and Areas of Significance to Māori Objectives
Sites and Areas of Significance to Māori	SASM - O1
Sites and Areas of Significance to Māori	SASM - O2

Amend SASM - O3 as follows:

The values of sites and areas of significance to Māori and cultural landscapes are protected ~~from~~ by managing adverse effects associated with inappropriate subdivision, use and development including inappropriate modification, demolition or destruction.

Sites and Areas of Significance to Māori	SASM - O3
Sites and Areas of Significance to Māori	Sites and Areas of Significance to Māori Policies
Sites and Areas of Significance to Māori	Cultural Landscapes

Support in part The objective seeks protection of values of sites and areas of significance to

Amend SASM - P1 as follows:

Protect Poutini Ngāi Tahu cultural landscapes from significant adverse effects of inappropriate subdivision, use and development while enabling their values to be enhanced through ongoing Poutini Ngāi Tahu access and cultural use.

Sites and Areas of Significance to Māori	SASM - P1
Sites and Areas of Significance to Māori	Identification and access to significant sites and areas
Sites and Areas of Significance to Māori	SASM - P2
Sites and Areas of Significance to Māori	SASM - P3
Sites and Areas of Significance to Māori	SASM - P4
Sites and Areas of Significance to Māori	Poutini Ngāi Tahu Roles
Sites and Areas of Significance to Māori	SASM - P5

Support in part The policy seeks proection of Poutini Ngai Tahu cultural landscapes. An ame

This policy seeks to support Aotea and Pounamu management. Pounamu ownership is managed through the Pounamu Vesting Act, and also through Crown Minerals Permits. Mineral extraction activities (or earthworks more generally) may cause unintentional disturbance/removal and the policy should be clarified to ensure that unintentional disturbance through mineral extraction for other resources is not captured by this policy.

Amend SASM - P6 as follows:

"Within the Pounamu and Aotea Management overlay, enable tino rangatiratanga and kaitiakitanga of the pounamu and aotea resource by Poutini Ngāi Tahu and avoid the intentional disturbance or intentional removal of this resource by non-hapū members.

Sites and Areas of Significance to Māori	SASM - P6
Sites and Areas of Significance to Māori	Management of Activities on Identified Significant Sites and Areas

Support in part

Amend SASM - P7 as follows:

Protect and maintain sites and areas of significance to Māori from adverse effects by:

- a.Ensuring identified sites and areas of significance to Māori are not disturbed, destroyed, removed and/or visually encroached upon by inappropriate activities; and
- b.Requiring activities on sites and areas of significance to Māori to minimise adverse effects on cultural, spiritual and/or heritage values, interests or associations of importance to Poutini Ngāi Tahu.

Sites and Areas of Significance to Māori	SASM - P7
--	-----------

Support in part A wording amendment is proposed to reflect changes requested to SASM - C

Amend SASM - P8 as follows:

Where an activity is proposed within any site or area of significance to Māori identified in Schedule Three ensure that:

- a.Engagement with Poutini Ngāi Tahu occurs to ensure that effects of the activity on the values of the site or area are understood;
- b.The accidental discovery protocol in Appendix Four is adopted for any earthworks;
- c.Any adverse effects on identified values are avoided, unless it can be demonstrated that due to the functional or operational needs of the activity it is not possible to avoid all adverse effects; and
- d.Any residual effects that cannot be practicably avoided are mitigated in a

Sites and Areas of Significance to Māori	SASM - P8
Sites and Areas of Significance to Māori	SASM - P9
Sites and Areas of Significance to Māori	Inappropriate Activities
Sites and Areas of Significance to Māori	SASM - P10
Sites and Areas of Significance to Māori	SASM - P11
Sites and Areas of Significance to Māori	SASM - P12
Sites and Areas of Significance to Māori	Appropriate Activities
Sites and Areas of Significance to Māori	SASM - P13
Sites and Areas of Significance to Māori	SASM - P14
Sites and Areas of Significance to Māori	SASM - P15
Sites and Areas of Significance to Māori	Sites and Areas of Significance to Māori Rules
Sites and Areas of Significance to Māori	Advice Notes:
Sites and Areas of Significance to Māori	Permitted Activities
Sites and Areas of Significance to Māori	SASM -R1
Sites and Areas of Significance to Māori	SASM -R2
Sites and Areas of Significance to Māori	SASM -R3
Sites and Areas of Significance to Māori	SASM -R4
Sites and Areas of Significance to Māori	SASM -R5
Sites and Areas of Significance to Māori	SASM -R6
Sites and Areas of Significance to Māori	SASM -R7
Sites and Areas of Significance to Māori	SASM -R8
Sites and Areas of Significance to Māori	SASM -R9
Sites and Areas of Significance to Māori	Controlled Activities
Sites and Areas of Significance to Māori	SASM - R10
Sites and Areas of Significance to Māori	Discretionary Activities
Sites and Areas of Significance to Māori	SASM - R11
Sites and Areas of Significance to Māori	SASM - R12
Sites and Areas of Significance to Māori	SASM - R13
Sites and Areas of Significance to Māori	SASM - R14
Sites and Areas of Significance to Māori	Non-complying Activities
Sites and Areas of Significance to Māori	SASM - R15
Sites and Areas of Significance to Māori	SASM - R16

Support in part This policy recognises that some activities have a function need to be locatetc way that protects, maintains or enhances the values of the site or area.

Sites and Areas of Significance to Māori SASM - R17
 Sites and Areas of Significance to Māori SASM - R18
 Sites and Areas of Significance to Māori Prohibited Activities
 Sites and Areas of Significance to Māori SASM - R19

Natural Environment Values Section

Ecosystems and Indigenous Biodiversity Section

Ecosystems and Indigenous Biodiversity ECO
 Ecosystems and Indigenous Biodiversity Ecosystems and Indigenous Biodiversity
 Ecosystems and Indigenous Biodiversity Overview
 Ecosystems and Indigenous Biodiversity Plantation Forestry
 Ecosystems and Indigenous Biodiversity Strategic Objectives
 Ecosystems and Indigenous Biodiversity Wetlands on the West Coast

Include an additional objective into Ecosystems and Indigenous Biodiversity as follows:

"When considering resource consent applications which have effects on ecosystems and indigenous biodiversity, have regard to the protection afforded to other similar ecosystems and indigenous biodiversity within

Ecosystems and Indigenous Biodiversity Ecosystems and Indigenous Biodiversity Objectives
 Ecosystems and Indigenous Biodiversity ECO- O1
 Ecosystems and Indigenous Biodiversity ECO- O2
 Ecosystems and Indigenous Biodiversity ECO- O3
 Ecosystems and Indigenous Biodiversity ECO- O4
 Ecosystems and Indigenous Biodiversity Ecosystems and Indigenous Biodiversity Policies
 Ecosystems and Indigenous Biodiversity ECO - P1

Amend An additional objective is sought to give effect to NENV - O3, which recognises public conservation land."
 Support This objective supports mineral extraction where values can be maintained. Retain as notified.
 Support This objective supports the maintenance of the range and diversity of ecosys Retain as notified.

Amend ECO - P2 as follows:

"Allow activities within areas of significant indigenous vegetation or significant habitats of indigenous fauna where:

- a.This is for a lawfully established activity; or
- b.It is for a Poutini Ngāi Tahu cultural purpose; or
- c.This is undertaken on Poutini Ngāi Tahu or Te Rūnanga o Ngāi Tahu land in accordance with an Iwi/Papatipu Rūnanga Management Plan; or
- d.The activity has a functional or operational need to be located in the area;
- e.The activity has no more than minor adverse effects on the significant indigenous vegetation or fauna habitat."

Ecosystems and Indigenous Biodiversity ECO - P2
 Ecosystems and Indigenous Biodiversity ECO - P3
 Ecosystems and Indigenous Biodiversity ECO - P4
 Ecosystems and Indigenous Biodiversity ECO - P5

Support in part This policy recognises that some activities have a functional need to be located in indigenous vegetation or fauna habitat."
 Support in part Subsections b and c are supported. Minerals extraction activities often provide for indigenous vegetation or fauna habitat. Retain subsections b and c as notified.

Amend ECO P6 as follows:

"When assessing consents for subdivision, use and development, ~~avoid~~ activities ~~shall be designed and undertaken in a way that does not:~~ ~~which will:~~

- a.Prevent an indigenous species or community being able to persist in their habitats within their natural range in the Ecological District;
 - b.Result in a degradation of the threat status, further measurable loss of indigenous cover (with the exception of Manuka and Kanuka) ~~or disruption to ecological processes, functions or connections~~ in land environments in category one or two of the Threatened Environment Classification at the Ecological District level; and
 - c.Result in a reasonably measurable reduction in the local population of threatened taxa in the Department of Conservation Threat Categories 1 – 3a -nationally critical, nationally endangered and nationally vulnerable."
- Amend ECO - P7 as follows:

When assessing resource consents in areas of significant indigenous vegetation and significant habitats of indigenous fauna, consider the following matters:

- a.The necessity for the activity to provide for critical infrastructure or renewable electricity generation;
- b.Whether formal protection and active management of all or part of any area of significant indigenous vegetation or habitat will occur as part of the subdivision, use or development;
- c.The extent to which the proposed activity recognises and provides for Poutini Ngāi Tahu cultural and spiritual values, rights and interests;
- d.The cumulative effects of activities within or adjacent to any area of significant indigenous vegetation or habitat;
- e.The effects the activity may have on the introduction or spread of exotic weed species and pest animals both terrestrial and aquatic;
- f.The impacts on mahinga kai;
- g.The impact of the activity on the values of any area of significant indigenous vegetation or habitat, or threatened species and how any potential impact could be avoided, remedied or mitigated;
- h. The functional or operational need for the activity to occur within areas of significant indigenous vegetation or significant habitats of indigenous fauna; and
- hi.The appropriateness of any biodiversity offsetting or compensation in accordance with Policy 9 to offset any residual adverse effects that remain

Ecosystems and Indigenous Biodiversity ECO - P7
 Ecosystems and Indigenous Biodiversity ECO - P8
 Ecosystems and Indigenous Biodiversity ECO - P9
 Ecosystems and Indigenous Biodiversity ECO - P10
 Ecosystems and Indigenous Biodiversity Ecosystems and Indigenous Biodiversity Rules
 Ecosystems and Indigenous Biodiversity Note:
 Ecosystems and Indigenous Biodiversity Permitted Activities
 Ecosystems and Indigenous Biodiversity ECO - R1
 Ecosystems and Indigenous Biodiversity ECO - R2
 Ecosystems and Indigenous Biodiversity Controlled Activities
 Ecosystems and Indigenous Biodiversity ECO - R3
 Ecosystems and Indigenous Biodiversity ECO - R4/SUB - R7
 Ecosystems and Indigenous Biodiversity Restricted Discretionary Activities

Support in part The policy recognises the need to provide for offsetting or compensation to
 Support The policy recognises the need to provide for offsetting or compensation to
 Support This permitted activity rule provides for a number of vegetation clearance ac
 Oppose This rule contains a very restrictive vegetation clearance requirement in the
 Delete ECO - R2. Alternatively, set a higher vegetation clearance activity, such as 2,000m2 and allow any activity (not just residential, network utility, tracks etc) to carry out limited clearance works.

Include functional and operational need in ECO - P7 as per relief sought above, and/or amend ECO - R5 as follows:

Discretion is restricted to:

- a. Whether there are other regulations impacting the site that have meant the land is unable to be used for economic rural uses;
- b. Constraints imposed by functional or operational need of network utilities and critical infrastructure;
- c. Effects on habitats of any threatened or protected species;
- d. Effects on the threat status of land environments in category one or two of the Threatened Environments Classification;
- e. Effects on ecological functioning and the life supporting capacity of air, water, soil and ecosystems;
- f. Effects on the intrinsic values of ecosystems;
- g. Effects on recreational values of public land; **and**
- h. The matters outlined in Policies ECO - P6 and ECO - P7 ; **and**
- i. The functional or operational need for the activity to locate within the area where indigenous vegetation clearance is proposed to occur.

Support in part The restricted discretionary activity status for indigenous vegetation clearance

Support The discretionary activity status for vegetation clearance within the specified Retain as notified.

Amend NFL - P1 as follows:

- a. Existing land uses and lawfully established activities including existing network utilities, energy activities, agricultural, horticultural and pastoral activities;
- b. Conservation activities;
- c. Recreational activities;
- d. Natural hazard mitigation activities;
- e. Operation, maintenance and upgrade of renewable electricity generation facilities;
- f. Operation, maintenance and upgrading of network infrastructure;
- g. Upgrading and/or new infrastructure and renewable electricity generation facilities where there is a functional need for it to be located in these areas;
- h. Poutini Ngāi Tahu uses; or
- i. The alteration, maintenance or removal of existing buildings or structures;
- j. Activities with a functional or operational need to locate within these areas, including mineral extraction, exploration and prospecting.

Support in part This policy is supported as it seeks to provide for activities to locate within or

Support This policy is supported because it recognises that sometimes adverse effect Retain as notified.

Amend NFL P3 as follows:

Recognise that there are settlements, farms, minerals extraction, exploration and prospecting, and infrastructure located within outstanding natural landscapes or outstanding natural features and provide for new activities and existing uses in these areas where the values that contribute to the outstanding natural landscape or feature are not adversely affected.

Support in part This policy is supported, however it should also include minerals extraction, , to the outstanding natural landscape or feature are not adversely affected.

Amend NFL P5 as follows:

Minimise adverse effects on outstanding natural landscapes and outstanding natural features by considering the following matters when assessing proposals for land use or subdivision:

- a. The scale of modification to the landscape;
- b. Whether the proposal is located within a part of the outstanding natural feature or outstanding natural landscape that has capacity to absorb change;
- c. Whether the proposal can be visually integrated into the landscape and whether it would break the skyline or ridgelines;
- d. The temporary , short term or permanent nature of any adverse effects;

Support in part This policy is supported, however should be amended to include consideration

Amend NFL - R6 as follows:

Earthworks, excluding minerals extraction, exploration and prospecting activities, within an Outstanding Natural Landscape described in Schedule Five or Outstanding Natural Feature described in Schedule Six ...

Alternatively, amend the definition of earthworks to specifically exclude minerals extraction, exploration and prospecting activities so that these rules do not apply to these activities.

Oppose in part Because the definition of Earthworks does not specifically exclude minerals €

Ecosystems and Indigenous Biodiversity ECO - R5
Ecosystems and Indigenous Biodiversity ECO - R6/SUB - R9
Ecosystems and Indigenous Biodiversity Discretionary Activities
Ecosystems and Indigenous Biodiversity ECO - R7
Ecosystems and Indigenous Biodiversity ECO - R8/SUB - R15
Ecosystems and Indigenous Biodiversity Non-complying Activities
Ecosystems and Indigenous Biodiversity ECO - R9/SUB - R27
Ecosystems and Indigenous Biodiversity ECO - R10
Ecosystems and Indigenous Biodiversity ECO - R11

Natural Features and Landscapes Section

Natural Features and Landscapes NFL
Natural Features and Landscapes Natural Features and Landscapes
Natural Features and Landscapes Overview
Natural Features and Landscapes Plantation Forestry
Natural Features and Landscapes Other relevant Te Tai o Poutini Plan provisions
Natural Features and Landscapes Natural Features and Landscapes Objective
Natural Features and Landscapes NFL - O1
Natural Features and Landscapes Natural Features and Landscapes Policies

Natural Features and Landscapes NFL - P1
Natural Features and Landscapes NFL - P2

Natural Features and Landscapes NFL - P3
Natural Features and Landscapes NFL - P4

Natural Features and Landscapes NFL - P5
Natural Features and Landscapes NFL - P6
Natural Features and Landscapes NFL - P7
Natural Features and Landscapes Permitted Activities
Natural Features and Landscapes NFL - R1
Natural Features and Landscapes NFL - R2
Natural Features and Landscapes NFL - R3
Natural Features and Landscapes NFL - R4
Natural Features and Landscapes NFL - R5

Natural Features and Landscapes NFL - R6
Natural Features and Landscapes NFL - R7
Natural Features and Landscapes NFL - R8
Natural Features and Landscapes Controlled Activities
Natural Features and Landscapes NFL - R9
Natural Features and Landscapes NFL - R10
Natural Features and Landscapes Restricted Discretionary Activities

Natural Features and Landscapes	NFL - R11
Natural Features and Landscapes	NFL - R12
Natural Features and Landscapes	Discretionary Activities
Natural Features and Landscapes	NFL - R13
Natural Features and Landscapes	NFL - R14
Natural Features and Landscapes	NFL - R15

Public Access Section

Natural Character and Margins of Waterbodies Section

Natural Character and Margins of Waterbody NC	
Natural Character and Margins of Waterbody Natural Character and Margins of Waterbodies	
Natural Character and Margins of Waterbody Overview	
Natural Character and Margins of Waterbody Natural Character and the Margins of Waterbodies Objectives	
Natural Character and Margins of Waterbody NC - O1	Support
Natural Character and Margins of Waterbody NC - O2	

This objective provides for activities to occur, provided adverse effects are a) Retain as notified.

Amend NC - O3 as follows:

To provide for activities which have a functional or operational need to locate in the margins of lakes, rivers and wetlands in such a way that the impacts on natural character are minimised.

Natural Character and Margins of Waterbody NC - O3	Support in part
Natural Character and Margins of Waterbody Natural Character and the Margins of Waterbodies Policies	
Natural Character and Margins of Waterbody NC - P1	

This objective recognises the functional need of some activities to occur with

Amend NC - P2 as follows:

Provide for indigenous vegetation removal, minerals extraction, exploration and prospecting activities and earthworks within riparian margins of lakes, rivers and wetlands where significant adverse effects on natural character are minimised as far as practicable and:

Amend NC - P3 as follows:

Provide for buildings and structures within riparian margins of lakes, rivers and wetlands where these:

Natural Character and Margins of Waterbody NC - P2	Support in part
--	-----------------

This objective recognises the functional and/or operational need of some ac

Natural Character and Margins of Waterbody NC - P3	Support in part
Natural Character and Margins of Waterbody NC - P4	
Natural Character and Margins of Waterbody NC - P5	
Natural Character and Margins of Waterbody Natural Character and the Margins of Waterbodies Rules	
Natural Character and Margins of Waterbody Note:	
Natural Character and Margins of Waterbody Permitted Activities	
Natural Character and Margins of Waterbody NC - R1	
Natural Character and Margins of Waterbody NC - R2	

This policy recognises the functional need of some activities to occur within t a. Have a functional or operational need for their location; and

Amend NC - R3 as follows:

Indigenous Vegetation Clearance and Earthworks excluding minerals extraction, exploration and prospecting activities, not meeting the Permitted Activity Rules Activity Status Discretionary

Alternatively, amend the definition of earthworks to specifically exclude minerals extraction, exploration and prospecting activities so that these rules do not apply to these activities.

Natural Character and Margins of Waterbody NC - R3	Oppose in part
Natural Character and Margins of Waterbody Discretionary Activities	
Natural Character and Margins of Waterbody NC - R3	
Natural Character and Margins of Waterbody NC - R4	
Natural Character and Margins of Waterbody NC - R5	

Because the definition of Earthworks does not specifically exclude minerals €

Financial Contributions Section

Subdivision Section

General District Wide Matters Section

Activities on the surface of water Section

Coastal Environment Section

Coastal Environment	CE
Coastal Environment	Coastal Environment
Coastal Environment	Overview
Coastal Environment	Coastal Environment Objectives
Coastal Environment	CE - O1
Coastal Environment	CE - O2

This objective recognises that many people in the West Coast region derive t Retain as notified.

Amend CE - O3 as follows:

To provide for activities which have a functional or operational need to locate in the coastal environment in such a way that the impacts on natural character, landscape, natural features, access and biodiversity values are minimised.

Coastal Environment	CE - O3
Coastal Environment	Coastal Environment Policies
Coastal Environment	CE - P1
Coastal Environment	CE - P2

This objective recognises the functional need of some activities to occur with

Amend CE - P3 as follows:

Only allow new subdivision, use and development within areas of outstanding and high coastal natural character, outstanding coastal natural landscapes and outstanding coastal natural features where:

- a. The elements, patterns, processes and qualities that contribute to the outstanding or high natural character or landscape are maintained;
- b. Significant adverse effects on natural character, natural landscapes and natural features, and adverse effects on areas of significant indigenous biodiversity, areas of outstanding natural character and outstanding natural landscapes and features are avoided;
- c. The development is of a size, scale and nature that is appropriate to the environment;
- d. It is for a Poutini Ngāi Tahu cultural purpose; or
- e. It is ~~National Grid infrastructure~~ an activity that has a functional and operational need to locate in these areas.

Coastal Environment	CE - P3
Coastal Environment	CE - P4
Coastal Environment	CE - P5
Coastal Environment	CE - P6
Coastal Environment	CE - P7
Coastal Environment	CE - P8
Coastal Environment	Coastal Environment Rules
Coastal Environment	Note:
Coastal Environment	Permitted Activities
Coastal Environment	CE - R1

This policy recognises the functional and operational need of National Grid a

This policy recognises the functional and operational need for buildings and Retain as notified.

Coastal Environment	CE - R2		
Coastal Environment	CE - R3		
Coastal Environment	CE - R4	Oppose	The proposed restrictions on building in the Coastal Environment are unduly Remove gross ground floor area size limit for buildings in the GRUZ, RLZ and SETZ zones by deleting CE-R4.2.iii.i
Coastal Environment	Permitted Activities within the High Coastal Natural Character Overlay		
Coastal Environment	CE - R5		
Coastal Environment	CE - R6		
Coastal Environment	CE - R7		
Coastal Environment	Permitted Activities within the Outstanding Coastal Environment Area		
Coastal Environment	CE - R8		
Coastal Environment	CE - R9		
Coastal Environment	CE - R10		
Coastal Environment	CE - R11		
Coastal Environment	Controlled Activities		
Coastal Environment	CE - R12		
Coastal Environment	Restricted Discretionary Activities		
Coastal Environment	CE - R13		
Coastal Environment	CE - R14		
Coastal Environment	CE - R15		
Coastal Environment	CE - R16		
Coastal Environment	CE - R17		
Coastal Environment	CE - R18		
Coastal Environment	Discretionary Activities		
Coastal Environment	CE - R19		
Coastal Environment	CE - R20		
Coastal Environment	CE - R21		
Coastal Environment	Non-complying Activities		
Coastal Environment	CE - R22		

Earthworks Section

Earthworks	EW		
Earthworks	Earthworks		
Earthworks	Overview		
Earthworks	Earthworks Objectives		
Earthworks	EW - O1	Support	This objective is supported, however it is noted that the submission seeks for Retain as notified.
Earthworks	Earthworks Policies		
			Amend EW - P1 as follows:
			Enable temporary and small scale earthworks for the subdivision, use and development of land, the provision of utilities, and hazard mitigation, while
			managing those with the potential to create significant adverse effects.
Earthworks	EW - P1	Support in part	This policy gives effect to EW - O1, however should enable all earthworks, in:
Earthworks	EW - P2		
Earthworks	EW - P3		
Earthworks	EW - P4		
Earthworks	Earthworks Rules		
Earthworks	Note:		
Earthworks	Permitted Activities		
			Amend EW - R1 as follows:
			All Permitted activities must comply with the following relevant standards.
			Earthworks must not exceed a maximum depth or height above ground level of 1.5m measured vertically within 1.5m of a boundary except where these are undertaken by a network utility operator for the purpose of:
			Pole foundations;
			Backfilled trenches; or
			Installation of services by trenchless methods such as directional drilling;
			All fill must consist of cleanfill material <u>except for any vegetative matter which is being used as fill on the same site</u> ;
Earthworks	EW - R1	Support in part	Earthworks are permitted provided that all fill consists of cleanfill material. Amend EW - R2 as follows:
			EW - R2
			Earthworks <u>excluding minerals extraction, exploration and prospecting activities</u> - All Zones
Earthworks	EW - R2	Support in part	Because the definition of Earthworks does not specifically exclude minerals €
Earthworks	EW - R3		
			Amend EW - R4 as follows:
			Earthworks <u>excluding minerals extraction, exploration and prospecting activities</u> in the GRUZ - General Rural Zone, RLZ - Rural Lifestyle Zone, any INZ - Industrial Zone, FUZ - Future Urban Zone, AIRPZ - Airport Zone, any
			OSRZ - Open Space and Recreation Zone and the MPZ - Māori Purpose Zone
Earthworks	EW - R4	Support in part	Because the definition of Earthworks does not specifically exclude minerals €
Earthworks	EW - R5		
Earthworks	EW - R6	Oppose	This rule permits earthworks within the Minerals Extraction and Buller Coalfi Delete EW - R6
Earthworks	Restricted Discretionary Activities		
Earthworks	EW - R7		
			Amend EW - R8 as follows:
			EW - R8Earthworks <u>excluding minerals extraction, exploration and prospecting activities</u> in any Zone not meeting Permitted Activity standards
Earthworks	EW - R8	Support in part	Because the definition of Earthworks does not specifically exclude minerals €

Light Section

Light	LIGHT		
Light	Light		
Light	Overview		
Light	Light Objectives		
Light	LIGHT - O1		
			Amend LIGHT - O2 as follows:
			Artificial outdoor lighting is located, designed and operated to maintain the character and amenity values within zones, so that it does not adversely affect the health and safety of people, the safe operation of the transport network, protects views of the night sky , the habitats and ecosystems of
Light	LIGHT - O2	Oppose in part	This policy requires protection of views of the night sky, which is not always ; nocturnal native fauna and the species themselves.
Light	Light Policies		

Amend LIGHT - P1 as follows:

Provide for the use of artificial outdoor lighting that:
a.Allows people and communities to enjoy and use sites and facilities during night time hours and contributes to the security and safety of private and public spaces;
b.Maintains the character and amenity values of the zone and surrounding area;
c.Supports the social, cultural, and economic wellbeing or health and safety of people and communities, including road safety;
d.Minimises sky glow and light spill; and
e. ~~Protects~~ Minimises the adverse effects on the health and well-being of people and ecosystems.

Amend LIGHT - P2 as follows:

Control the intensity, location and direction of any artificial outdoor lighting to:
a.Ensure that any artificial outdoor lighting avoids conflict with existing light sensitive areas and uses;
b.Internalise light spill within the site where the outdoor lighting is located;
c.Minimises adverse effects on views of the night sky and intrinsically dark landscapes ~~including~~ in areas of outstanding coastal natural character;

Delete LIGHT - R1
Amend LIGHT - R2 as follows:

Where:
1.Outdoor artificial lighting must not exceed the following vertical or horizontal light levels:
a.7.00am – 10.00pm: 25 Lux;
b.10.00pm – 7.00am: 10 Lux in the PORTZ - Port Zone, and MINZ - Mineral Extraction Zone; and
c.10.00pm - 7am: 5 Lux in the TCZ - Town Centre, MUZ - Mixed Use, COMZ - Commercial, HOSZ - Hospital, STADZ - Stadium, AIRPZ - Airport and all INZ - Industrial Zones;

Amend LIGHT - R4 as follows:

Where:
1. Outdoor artificial lighting must not exceed the following vertical or horizontal light levels:
a. ~~7.00am – 10.00pm: 10 Lux; and~~
~~b.10.00pm – 7.00am: 2 Lux;~~

Retain the following wording:

"The nature of the West Coast, with its extensive mineral deposits, combined with 84% of the land area being located in public conservation estate, means that provision is also made for mineral extraction within the Open Space Zone."

Amend OSRZ - P9 as follows:

Provide for the range of purposes where compatible with the open space values including:
a.The ongoing operation and appropriate management of cemeteries;
b.Camping opportunities at rivers, lakes and coastal areas where this is compatible with the values of the open space;
c.Gravel and shingle extraction for roading networks and other local purposes;
d.Quarries for rock;
e.Pastoral farming including grazing as a management tool;
f.Mineral extraction exploration and prospecting of resources where there is a functional or operational need to locate there~~these are limited in their location~~; and
g.Water supply and drainage networks where this supports local

Light	LIGHT - P1	Oppose in part	The wording of this policy is inconsistent with the corresponding objective.
Light Light Light Light Light Light	LIGHT - P2 LIGHT - P3 Light Rules Note: Permitted Activities LIGHT - R1	Oppose in part	The submission seeks amendments to LIGHT O2 which relates to the require
Light Light	LIGHT - R2 LIGHT - R3	Oppose	This rule requires the discretion of the relevant territorial authority to assess
Light Light Light Light	LIGHT - R4 Restricted Discretionary Activities LIGHT - R5 Discretionary Activities LIGHT - R6	Oppose in part	This rule introduces a very stringent lux limit for night time lighting in all zone
Noise Section			
Signs Section			
Temporary Activities Section			
PART 3 - AREA-SPECIFIC MATTERS Section			
ZONES Section			
ZONES	ZONES		
Open Space and Recreation Zones Section			
Open Space and Recreation Zones Open Space and Recreation Zones Open Space and Recreation Zones	Open Space and Recreation Zones OSRZ Open Space and Recreation Zones	Oppose	The Proposed Plan includes Open Space and Recreation Zones. These have t In the Planning Maps, replace the Open Space Zones with General Rural Zone on rural public conservation land, except where the submitter has sought a Mineral Extraction Zone.
Open Space and Recreation Zones Open Space and Recreation Zones Open Space and Recreation Zones Open Space and Recreation Zones Open Space and Recreation Zones Open Space and Recreation Zones Open Space and Recreation Zones Open Space and Recreation Zones Open Space and Recreation Zones Open Space and Recreation Zones Open Space and Recreation Zones Open Space and Recreation Zones Open Space and Recreation Zones Open Space and Recreation Zones	Overview OSRZ - Open Space and Recreation Zones Objectives OSRZ - O1 OSRZ - O2 OSRZ - Open Space and Recreation Zones Policies OSRZ - P1 OSRZ - P2 OSRZ - P3 OSRZ - P4 OSRZ - P5 OSRZ - P6 OSRZ - P7 OSRZ - P8	Support in part	The overview of the Open Space Zone notes that minerals extraction can occ
Open Space and Recreation Zones Open Space and Recreation Zones Open Space and Recreation Zones	OSRZ - P9 OSRZ - P10 Open Space Zone	Support in part	This policy seeks to provide for a range of activities, and provides for mineral community needs.

Open Space and Recreation Zones OSRZ - P11
 Open Space and Recreation Zones OSRZ - P12
 Open Space and Recreation Zones OSRZ - P13

Amend OSRZ - P14 as follows:

Provide for mineral extraction activities within the OSZ - Open Space Zone where:
~~a.Impacts on open space and recreation values of the site are minimised;~~
~~b.This is provided for within any Open Space Management Plan for the area;~~
 c.Adverse effects on open space and recreation values and the environment are avoid, mitigated, remedied, offset or compensated;
 d.Sites are rehabilitated at the end of the mineral extraction activity to

Open Space and Recreation Zones OSRZ - P14
 Open Space and Recreation Zones Sport and Active Recreation Zone
 Open Space and Recreation Zones OSRZ - P15
 Open Space and Recreation Zones OSRZ - P16
 Open Space and Recreation Zones OSRZ - P17
 Open Space and Recreation Zones Natural Open Space Zone
 Open Space and Recreation Zones OSRZ - P18
 Open Space and Recreation Zones OSRZ - P19
 Open Space and Recreation Zones OSRZ - P20

Support in part This policy specifically provides for minerals extraction activities, however co enable the land to be used for an appropriate activity.

Natural Open Space Zone Section

Open Space Zone Section

Open Space Zone OSZ
 Open Space Zone Open Space Zone
 Open Space Zone Overview
 Open Space Zone OSZ - Open Space Zone Rules
 Open Space Zone Note:
 Open Space Zone Permitted Activities
 Open Space Zone OSZ - R1
 Open Space Zone OSZ - R2
 Open Space Zone OSZ - R3
 Open Space Zone OSZ - R4
 Open Space Zone OSZ - R5
 Open Space Zone OSZ - R6
 Open Space Zone OSZ - R7
 Open Space Zone OSZ - R8
 Open Space Zone OSZ - R9
 Open Space Zone OSZ - R10
 Open Space Zone OSZ - R11
 Open Space Zone OSZ - R12
 Open Space Zone Controlled Activities
 Open Space Zone OSZ - R13
 Open Space Zone Restricted Discretionary Activities
 Open Space Zone OSZ - R14
 Open Space Zone OSZ - R15
 Open Space Zone OSZ - R16
 Open Space Zone OSZ - R17
 Open Space Zone OSZ - R18
 Open Space Zone OSZ - R19
 Open Space Zone OSZ - R20
 Open Space Zone Discretionary Activities
 Open Space Zone OSZ - R21
 Open Space Zone OSZ - R22
 Open Space Zone OSZ - R23
 Open Space Zone Non-complying Activities
 Open Space Zone OSZ - R24
 Open Space Zone OSZ - R25
 Open Space Zone OSZ - R26

Support This rule classifies mineral extraction, exploration and prospecting as a restrit Retain as notified.

Support This rule classifies mineral extraction, exploration and prospecting as a discr Retain as notified.

Sport and Active Recreation Zone Section

Commercial and Mixed Use Zones Section

Commercial Zone Section

Mixed Use Zone Section

Neighbourhood Centre Zone Section

Town Centre Zone Section

Industrial Zones Section

General Industrial Zone Section

General Industrial Zone GIZ
 General Industrial Zone General Industrial Zone
 General Industrial Zone Overview
 General Industrial Zone Other relevant Te Tai o Poutini Plan provisions
 General Industrial Zone General Industrial Zone Rules
 General Industrial Zone Note:
 General Industrial Zone Permitted Activities

Amend LIZ - R1 as follows:

Activity Status Permitted

Where:

- 1.The maximum building height above ground level is 12m;
- 2.Maximum site coverage is 65%;
- 3.Buildings are setback a minimum:
 - i.10m from State Highways; and
 - ii.5m from road boundaries, any Residential Zone, Open Space Zone or Settlement Zone boundary and the Rail Corridor;
- 4.All external storage and car parking areas shall be screened by a 1.8m fence or landscaping so that:
 - i.It is not visible from any adjacent Residential Zone or Settlement Zone boundary or adjacent public place; and
 - ii.The fence or landscaping is set back from the road boundary so that it does not restrict visibility;
- 5.No blasting or vibration shall occur outside the hours of 0800 to 1800 hours weekdays and 0900 to 1600 hours on Saturdays with no blasting or vibration to be undertaken on Sundays or public holidays;
- 6.~~There shall be no offensive or objectionable dust nuisance at or beyond the LIZ - Light Industrial Zone boundary as a result of the activity;~~
- 7.The area adjoining the road frontage of all sites, and the side boundary of a site that adjoins a RESZ - Residential, SETZ - Settlement, OSZ - Open Space, SARZ - Sport and Recreation Zone or MUZ - Mixed Use Zone shall contain landscaping as follows:
 - a.A minimum width of 2 metres that will, within two years of being

This rule contains a number of problematic provisions for industrial activities.

This rule requires as a condition that there is no dust nuisance at the Light Industrial Zone Boundary when it should say General Industrial Zone. While dust nuisance is often a matter of discretion when considering land use consents required by a District Plan, it would be unusual to have a rule which effectively seeks to limit air discharges. The West Coast Regional Air Plan controls air discharges and the rule is inappropriate.

Similarly the West Coast Regional Land and Water Plan is the appropriate plan to control stormwater discharge, and there is no requirement for a stormwater disposal rule in the Proposed Plan.

Oppose

- General Industrial Zone GIZ - R1
- General Industrial Zone GIZ - R2
- General Industrial Zone GIZ - R3
- General Industrial Zone GIZ - R4
- General Industrial Zone GIZ - R5
- General Industrial Zone GIZ - R6
- General Industrial Zone GIZ - R7
- General Industrial Zone GIZ - R8
- General Industrial Zone Restricted Discretionary Activities
- General Industrial Zone GIZ - R9
- General Industrial Zone GIZ - R10
- General Industrial Zone GIZ - R11
- General Industrial Zone Discretionary Activities
- General Industrial Zone GIZ - R12

Light Industrial Zone Rules Section

Residential Zones Section

General Residential Zone Section

Large Lot Residential Zone Section

Medium Density Residential Zone Section

Rural Zones Section

- Rural Zones Rural Zones
- Rural Zones RURZ
- Rural Zones Rural Zones - Objectives and Policies
- Rural Zones Overview
- Rural Zones Note with Regard to Plantation Forestry
- Rural Zones Rural Zones Objectives

Amend RURZ - O1 as follows:

"To provide for a range of activities, uses and developments, including primary production, that maintain the amenity and rural character values of the rural environment, while retaining highly productive land ~~for and~~ rural activities, and supporting a productive rural working environment."

Support in part This objective is enabling of activities in the rural zones, however wording co

- Rural Zones RURZ - O1
- Rural Zones RURZ - O2
- Rural Zones RURZ - O3
- Rural Zones RURZ - O4

Amend RURZ - O5 as follows:

To ~~support~~ provide for the use and extraction of mineral resources located within the rural environment, recognising that mineral resources are widespread, and that provided adverse effects are minimised and rehabilitation of land occurs following mineral extraction, mineral extraction can be appropriate in a range of locations.

Support in part This objective recognises the extraction of mineral resources occurs in the ru

- Rural Zones RURZ - O5
- Rural Zones RURZ - O6
- Rural Zones Rural Zones Policies
- Rural Zones Rural Amenity and Character
- Rural Zones RURZ - P1
- Rural Zones RURZ - P2

Support This policy supports a wide range of activities, which includes minerals extrai Retain as notified.

Amend RURZ - P3 as follows:

Expansion of existing settlements beyond current boundaries should support the existing character and amenity of the settlement and avoid areas of high hazard risk, high natural or Poutini Ngāi Tahu cultural values, or ~~significant agricultural~~ primary production values.

Support in part The policy provides for management of reverse sensitivity effects on certain

- Rural Zones RURZ - P3
- Rural Zones RURZ - P4
- Rural Zones Production Values
- Rural Zones RURZ - P5
- Rural Zones Non-Rural Activities
- Rural Zones RURZ - P6
- Rural Zones RURZ - P7
- Rural Zones RURZ - P8
- Rural Zones Visitor Economy
- Rural Zones RURZ - P9
- Rural Zones RURZ - P10
- Rural Zones Infrastructure in Rural Areas
- Rural Zones RURZ - P11
- Rural Zones RURZ - P12
- Rural Zones RURZ - P13
- Rural Zones RURZ - P14
- Rural Zones Reverse sensitivity
- Rural Zones RURZ - P15
- Rural Zones RURZ - P16
- Rural Zones Papakāinga housing
- Rural Zones RURZ - P17
- Rural Zones Mineral Extraction

Support The policy provides for management of reverse sensitivity effects and is supp Retain as notified.

Rural Zones	RURZ - P18	Support in part	<p>This policy provides for adverse effects to be avoided, remedied or mitigated mitigated, offset or compensated for.</p> <p>Amend RURZ - P18 as follows:</p> <p>Recognise that mineral resources are fixed in location and enable mineral extraction activities provided adverse effects are avoided, remedied, or mitigated, offset or compensated for.</p> <p>Amend RURZ - P19 as follows:</p> <p>Manage conflicts between mineral extraction activities and other land uses by ensuring that:</p> <p>a. Standards to manage adverse effects minimise impacts on the amenity, rural character and natural values of rural areas are met; and b. Activities that are incompatible with the effects of mineral extraction activities are not established close to existing mineral extraction activities.</p>
Rural Zones	RURZ - P19	Support in part	This policy is supported, however amendments are sought for consistency
Rural Zones	RURZ - P20	Support	This policy requires the provision of adequate information to assess effects
Rural Zones	RURZ - P21	Support	This policy requires rehabilitation of land following mineral extraction in an
Rural Zones	RURZ - P22	Support	This policy supports co-ordination which will avoid duplication of effort in re
Rural Zones	RURZ - P23	Support	This policy supports the creation of Minerals Extraction Zones where the res
Rural Zones	RURZ - P24	Support	This policy supports the creation of Minerals Extraction Zones where the res
			<p>Amend RURZ - P25 as follows:</p> <p>RURZ - P25 Maintain the quality of the environment and amenity of areas surrounding the mineral extraction activities as far as practicable by:</p> <p>a. Utilising management, mitigation and rehabilitation plans as a key tool; b. Managing dust, noise, vibration, access and lighting to maintain amenity values; c. Managing traffic generation impacts on the operation and maintenance of the transport network; d. Avoiding or mitigating impacts Managing adverse effects on significant indigenous vegetation and significant habitats of indigenous fauna;</p>
Rural Zones	RURZ - P25	Support in part	This policy seeks maintenance of amenity and quality of the environment, h
Rural Zones	Airfields and Helipads		
Rural Zones	RURZ - P26		
Rural Zones	RURZ - P27		
Rural Zones	RURZ - P28		
Rural Zones	GRUZ - PREC1 - Community Living Precinct Policy		
Rural Zones	GRUZ - PREC1 - P1		
Rural Zones	SETZ - PREC2 - Settlement Centre Precinct Policy		
Rural Zones	SETZ - PREC2 - P2		
Rural Zones	SETZ - PREC3 - Coastal Settlement Precinct Policy		
Rural Zones	SETZ - PREC3 - P3		
Rural Zones	SETZ - PREC4 - Rural Residential Precinct Policy		
Rural Zones	SETZ - PREC4 - P4		
Rural Zones	GRUZ - PREC 5 - Highly Productive Land Precinct Policy		
Rural Zones	GRUZ - PREC5 - P5		
General Rural Zone Section			
General Rural Zone	GRUZ		
General Rural Zone	General Rural Zone - Rules		
General Rural Zone	Overview		
General Rural Zone	General Rural Zone Rules		
General Rural Zone	Note:		
General Rural Zone	Permitted Activities		
General Rural Zone	GRUZ - R1		
General Rural Zone	GRUZ - R2		
General Rural Zone	GRUZ - R3		
General Rural Zone	GRUZ - R4		
General Rural Zone	GRUZ - R5		
General Rural Zone	GRUZ - R6		
General Rural Zone	GRUZ - R7		
General Rural Zone	GRUZ - R8		
General Rural Zone	GRUZ - R9		
General Rural Zone	GRUZ - R10		
General Rural Zone	GRUZ - R11	Support	This rule provides for minerals exploration and prospecting and is supported
General Rural Zone	GRUZ - R12	Support	This rule provides for minerals extraction as a permitted activity, albeit in lim
General Rural Zone	GRUZ - R13		
General Rural Zone	GRUZ - R14		
General Rural Zone	Controlled Activities		
General Rural Zone	GRUZ - R15		
General Rural Zone	GRUZ - R16		
General Rural Zone	GRUZ - R17		
General Rural Zone	GRUZ - R18		
General Rural Zone	GRUZ - R19		
General Rural Zone	Restricted Discretionary Activities		
General Rural Zone	GRUZ - R20		
General Rural Zone	GRUZ - R21		
General Rural Zone	GRUZ - R22		
General Rural Zone	GRUZ - R23		
General Rural Zone	GRUZ - R24	Oppose	<p>Non-rural activities is not defined. Without any definition it is unclear what i</p> <p>Delete GRUZ - R24</p> <p>Amend GRUZ - R25 as follows:</p> <p>GRUZ - R25 Mineral Extraction <u>Prospecting and Exploration</u> Activities not meeting Permitted or Controlled Activity Standards</p> <p>...</p> <p>Discretion is restricted to:</p> <p>a. Management of access, parking and traffic generation; b. Noise, glare, light, dust, blasting and vibration management; c. Hours of operation; d. Hazardous substances and waste management; e. Historic and Poutini Ngāi Tahu cultural heritage requirements; f. Extent and management of earthworks and indigenous vegetation clearance; g. Effects on any threatened fauna or flora or their habitats; h. Design and location of buildings, structures and infrastructure; i. Landscape measures; j. Maintaining public access; k. Effects on riparian margins and water quality; l. Monitoring, reporting and community liaison requirements; m. Financial contributions and any requirement for bonds; and n. Site rehabilitation and mine closure requirements.</p>
General Rural Zone	GRUZ - R25	Support in part	Matters of discretion include water quality. This is not a district planning ma

General Rural Zone	GRUZ - R26		
General Rural Zone	Discretionary Activities		
General Rural Zone	GRUZ - R27		
General Rural Zone	GRUZ - R28		
General Rural Zone	GRUZ - R29		
General Rural Zone	GRUZ - R30		
General Rural Zone	GRUZ - R31		
General Rural Zone	GRUZ - R32	Oppose	GRUZ - R25 makes minerals extraction a restricted discretionary activity. If a Delete GRUZ-32.
General Rural Zone	GRUZ - R33		
General Rural Zone	Non-complying Activities		
General Rural Zone	GRUZ - R34		
General Rural Zone	GRUZ - R35		
Rural Lifestyle Zone Section			
Settlement Zone Section			
SPZ - Special Purpose Zones Section			
Airport Zone Section			
Buller Coalfield Zone Section			
Future Urban Zone Section			
Hospital Zone Section			
Mineral Extraction Zone Section			
Mineral Extraction Zone	MINZ		
Mineral Extraction Zone	Mineral Extraction Zone		
Mineral Extraction Zone	Overview	Support	Supports the inclusion of the Minerals Extractions Zones which recognises th
Mineral Extraction Zone	Mineral Extraction Zone Objectives		
Mineral Extraction Zone	MINZ - O1	Support	This objective enables mineral extraction activities in the MINZ and is support
			Retain as notified. Amend MINZ - O2 as follows: To ensure exploration, extraction and processing of minerals within the MINZ - Mineral Extraction Zone minimises-manages adverse effects on the environment, the community and the relationship of Poutini Ngāi Tahu with their ancestral lands, sites and areas of significance, water, wāhi tapu and other taonga.
Mineral Extraction Zone	MINZ - O2	Support in part	This objective recognises the need to address adverse effects, however a wo
Mineral Extraction Zone	Mineral Extraction Policies		
Mineral Extraction Zone	MINZ - P1	Support	This policy encourages the recognition of important mineral resources throu
Mineral Extraction Zone	MINZ - P2	Support	This policy recognises the need to protect mineral resources from reverse se
			Retain as notified. Retain as notified. Amend MINZ - P3 as follows: To ensure that after mineral extraction, all mine sites in the MINZ - Mineral Extraction Zone are rehabilitated to <u>the best practicable practice</u> environmental standards and to provide for future use and activities appropriate to the area. Amend MINZ - P4 as follows: Maintain the quality of the environment, landscape, ecological values, character and amenity of the areas surrounding the MINZ - Mineral Extraction Zone as far as practicable by: a.Utilising management, monitoring, rehabilitation and mine closure plans as a key tool; b.Managing dust, noise, vibration, access and lighting to maintain amenity values; c.Managing traffic generation, load type and vehicle characteristics on the operation and maintenance of the transport network; d.Managing adverse effects impacts on significant indigenous vegetation and significant habitats of indigenous fauna;
Mineral Extraction Zone	MINZ - P3	Support	This policy requires rehabilitation of land following mineral extraction, and is
Mineral Extraction Zone	MINZ - P4	Amend	This policy recognises the need to address adverse effects, however a wordir
Mineral Extraction Zone	MINZ - P5	Support	These policies effectively manage the relationship between the MINZ and SNA/SASM, so recourse to rules for indigenous vegetation and SASM are not required.
Mineral Extraction Zone	MINZ - P6	Support	These policies effectively manage the relationship between the MINZ and SNA/SASM, so recourse to rules for indigenous vegetation and SASM are not required.
			Amend MINZ - P4 as follows: Maintain the quality of the environment, landscape, ecological values, character and amenity of the areas surrounding the MINZ - Mineral Extraction Zone as far as practicable by: a.Utilising management, monitoring, rehabilitation and mine closure plans as a key tool; b.Managing dust, noise, vibration, access and lighting to maintain amenity values; c.Managing traffic generation, load type and vehicle characteristics on the operation and maintenance of the transport network; d.Managing adverse effects impacts on significant indigenous vegetation and significant habitats of indigenous fauna;
Mineral Extraction Zone	MINZ - P7	Support in part	This policy recognises the need to address adverse effects, however a wordir
Mineral Extraction Zone	MINZ - P8	Support	This policy provides for adverse effects to be managed using the effects man
Mineral Extraction Zone	Rules		
Mineral Extraction Zone	Note:		
Mineral Extraction Zone	Permitted Activities		
Mineral Extraction Zone	MINZ - R1		
			An additional advice note is sought as follows: "This rule does not override the protection of consented activities under Section 9(3)(a) of the Resource Management Act 1991 or existing use rights provided for under Section 10 of the Act." Retain as notified.
Mineral Extraction Zone	MINZ - R2	Support in part	This rule seeks to provide for minerals extraction activities where lawfully est
Mineral Extraction Zone	MINZ - R3	Support	This rule provides for ancillary activities and is supported.
Mineral Extraction Zone	MINZ - R4		
Mineral Extraction Zone	MINZ - R5		
Mineral Extraction Zone	Controlled Activities		
Mineral Extraction Zone	MINZ - R6	Support	The activity status for vegetation clearance is supported.
Mineral Extraction Zone	Restricted Discretionary Activities		
Mineral Extraction Zone	MINZ - R7	Support	The activity status for mineral extraction activities is supported
Mineral Extraction Zone	Discretionary Activities		
Mineral Extraction Zone	MINZ - R8		
Mineral Extraction Zone	Non-complying Activities		
Mineral Extraction Zone	MINZ - R9		
Mineral Extraction Zone	MINZ - R10		
Māori Purpose Zone Section			
Port Zone Section			
Stadium Zone Section			
Scenic Visitor Zone Section			
Development Areas Section			

Designations Section

PART 4 - APPENDICES Section

Schedules Section

SCHED1A - SCHEDULE OF HISTORIC HERITAGE ITEMS AND AREAS Section

SCHED1B - SCHEDULE OF ARCHEOLOGICAL SITES Section

SCHED2 - SCHEDULE OF NOTABLE TREES Section

SCHED3 - SITES AND AREAS OF SIGNIFICANCE TO MĀORI Section

SCHED4 - SCHEDULE OF SIGNIFICANT NATURAL AREAS Section

SCHED5 - SCHEDULE OF OUTSTANDING NATURAL LANDSCAPES Section

SCHED6 - SCHEDULE OF OUTSTANDING NATURAL FEATURES Section

SCHED7 - SCHEDULE OF HIGH COASTAL NATURAL CHARACTER Section

SCHED8 - SCHEDULE OF OUTSTANDING COASTAL NATURAL CHARACTER Section

SCHED9 - LAWFULLY ESTABLISHED MINERAL EXTRACTION AND PROCESSING AREAS Section

SCHED9 - LAWFULLY ESTABLISHED MINERAL E: SCHED9 - LAWFULLY ESTABLISHED MINERAL EXTRACTION AND PROCESSING AREAS

SCHED9 - LAWFULLY ESTABLISHED MINERAL E: Buller Coalfield Zone

SCHED9 - LAWFULLY ESTABLISHED MINERAL E: Stockton Mine

SCHED9 - LAWFULLY ESTABLISHED MINERAL E: Denniston Plateau

SCHED9 - LAWFULLY ESTABLISHED MINERAL E: Mineral Extraction Zone

SCHED9 - LAWFULLY ESTABLISHED MINERAL E: Roa Mine Blackball

SCHED9 - LAWFULLY ESTABLISHED MINERAL E: Rajah Mine, Blackball

SCHED9 - LAWFULLY ESTABLISHED MINERAL E: Echo Mine, Reefton

SCHED9 - LAWFULLY ESTABLISHED MINERAL E: New Creek Mine, New Creek

SCHED9 - LAWFULLY ESTABLISHED MINERAL E: Giles Creek Mine Reefton

SCHED9 - LAWFULLY ESTABLISHED MINERAL E: Mai Mai Siding

SCHED9 - LAWFULLY ESTABLISHED MINERAL E: Reefton Distribution Centre

SCHED9 - LAWFULLY ESTABLISHED MINERAL E: Island Block Mine Reefton

SCHED9 - LAWFULLY ESTABLISHED MINERAL E: Grey Valley Distribution Centre, Ikamatua

SCHED9 - LAWFULLY ESTABLISHED MINERAL E: Strongman Mine, Rapahoe

SCHED9 - LAWFULLY ESTABLISHED MINERAL E: Strongman Mine, Access and infrastructure

SCHED9 - LAWFULLY ESTABLISHED MINERAL E: Strongman East Mine

SCHED9 - LAWFULLY ESTABLISHED MINERAL E: Rapahoe Coal Yard

SCHED9 - LAWFULLY ESTABLISHED MINERAL E: Rocky Creek Coal Washery

SCHED9 - LAWFULLY ESTABLISHED MINERAL E: Kaiata Yard

SCHED9 - LAWFULLY ESTABLISHED MINERAL E: Kiwi Quarry

SCHED9 - LAWFULLY ESTABLISHED MINERAL E: Karamea Quarry

SCHED9 - LAWFULLY ESTABLISHED MINERAL E: Blackball Quarry

SCHED9 - LAWFULLY ESTABLISHED MINERAL E: Okuru Quarry

SCHED9 - LAWFULLY ESTABLISHED MINERAL E: BRM Developments Ianthe Forest Mine

SCHED9 - LAWFULLY ESTABLISHED MINERAL E: Birchfields Ross Mine

SCHED9 - LAWFULLY ESTABLISHED MINERAL E: R&M Mining Mine Ross Township

SCHED9 - LAWFULLY ESTABLISHED MINERAL E: Reefton Restoration Project/ Globe Progress Mine

SCHED9 - LAWFULLY ESTABLISHED MINERAL E: Snowy River Gold Mine

SCHED9 - LAWFULLY ESTABLISHED MINERAL E: Westland Schist Quarry

SCHED9 - LAWFULLY ESTABLISHED MINERAL E: Karamea Lime Quarry

SCHED10 - PREVIOUSLY MINED LOCATIONS IN THE RURAL AND OPEN SPACE AND RECREATION ZONES Section

Appendices Section

Appendix One: Transport Performance Standards Section

Appendix Two: Recession Planes Section

Appendix Three: Design Guidelines Section

Appendix Four: Accidental Discovery Protocols Section

Appendix Five: Statutory Acknowledgements Section

Appendix Six: Nohoanga Entitlements Section

Appendix Seven: Mineral Extraction Management Plan Requirements Section

Appendix Seven: Mineral Extraction Managem Appendix Seven: Mineral Extraction Management Plan Requirements

Support

The submitter supports the inclusion of the schedule of lawfully established Retain lawfully established minerals extraction zones.

Support

The submitter supports the inclusion of the schedule of lawfully established Retain lawfully established minerals extraction zones.

Amend Outline of Content Requirements for a Mineral Extraction Management Plan as follows:

- 1.Introduction
- i.Statutory Approvals – status
- ii.Location
- iii.Overview of the mineral extraction operations
- 2.Recieving Environment (address all that are relevant)
 - i.Climate
 - ii.Geology
 - iii.Hydrology – including presence of lakes, wetlands and waterways
 - iv.Terrestrial ecology including key species
 - v.Landscape context
 - vi.Neighbouring land uses
 - vii.Coastal environment
- 3.Management of Environmental Effects
 - i.Terrestrial Ecology (address all that are relevant)
 - a.Native vegetation
 - b.Native fauna
 - c.Significant natural areas
 - d.Key species
 - e.Key risks to be managed
 - f.Any specific species or ecosystem management plans
 - ii.Landscape values and Amenity (address all that are relevant)
 - a.Landscape values
 - b.Neighbouring landuses

Appendix Seven: Mineral Extraction Managem Outline of Content Requirements for a Mineral Extraction Management Plan

Oppose in part

The proposed Mineral Extraction Management Plan requirements are preser

Appendix Eight: Community Living Precinct Concept Plans Section

Appendix Nine: Airport Approach Path Overlay Section

Appendix Ten: New Zealand Archaeological Association Sites of Māori Origin Section